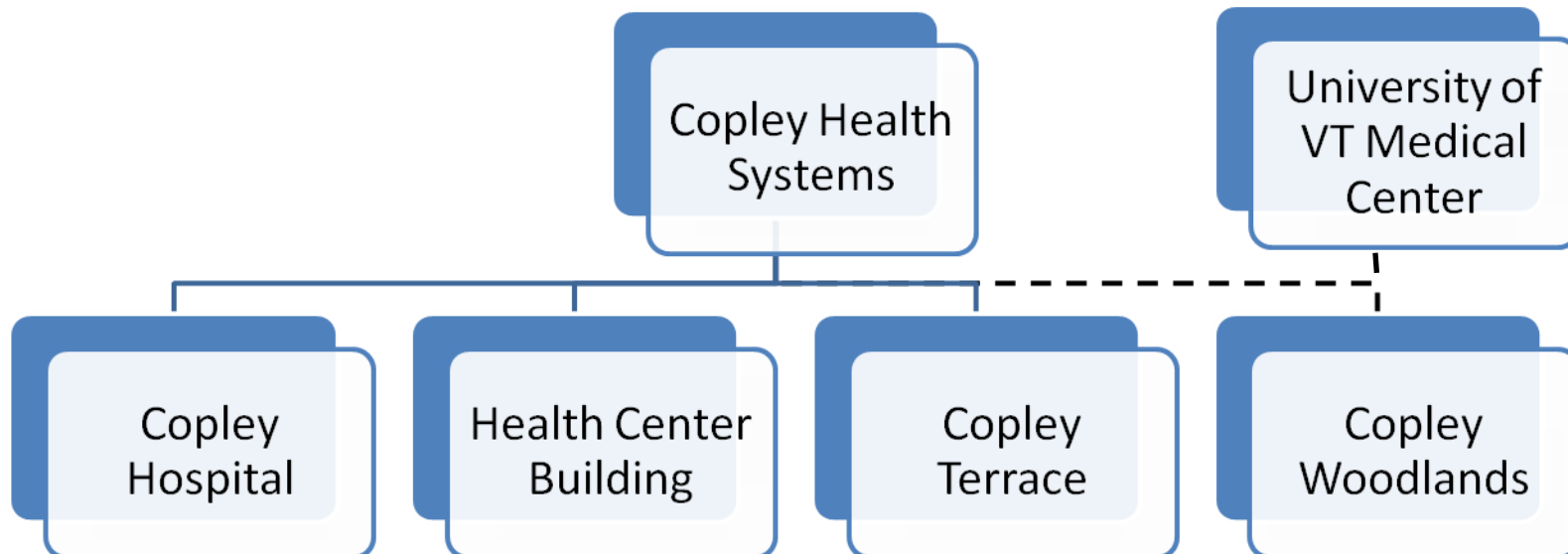


## Copley Health Systems, Inc. Organizational Structure



### Copley Health Systems, Inc.

Copley Health Systems, Inc. (CHSI), which began operations in 1987, is a tax-exempt organization which is the parent company of and controls, through sole corporate membership, a number of entities as discussed herein. CHSI also coordinates and implements fundraising and other resource development activities for the various CHSI entities and holds, as agent for Copley Hospital, Inc. (the Hospital), an endowment for the benefit of the Hospital.

### Copley Hospital, Inc.

The Hospital is a not-for-profit corporation organized under the laws of the State of Vermont for the purpose of establishing and maintaining a public, voluntary, short-term, critical access hospital (CAH).

### Health Center Building, Inc.

Health Center Building, Inc. (HCB) is a for-profit corporation that owns and manages one office building that is leased to the Hospital and area physicians.

### Lamoille Area Housing Corporation d/b/a Copley Terrace

Lamoille Area Housing Corporation d/b/a Copley Terrace is a 38-unit apartment project located in Morrisville, Vermont, organized under the provisions of Section 202 and Section 8 of the National Housing Act for the purpose of providing subsidized housing for the elderly. Such projects are regulated by the U.S. Department of Housing and Urban Development (HUD) as to rent charges and operating methods. Copley Terrace is also subject to a Section 8 Housing Assistance Payments contract with HUD, and a significant portion of Copley Terrace's rental income is received from HUD. Copley Terrace's major programs are its Section 202 direct loan and its Section 8 rental subsidies.

### Copley Woodlands, Inc.

Copley Woodlands, Inc. (CWI) is a not-for-profit corporation which operates an independent living retirement facility located in Stowe, Vermont. CWI is owned 50% by CHSI and 50% by University of Vermont Medical Center (UVMC) (formerly known as Fletcher Allen Health Care).