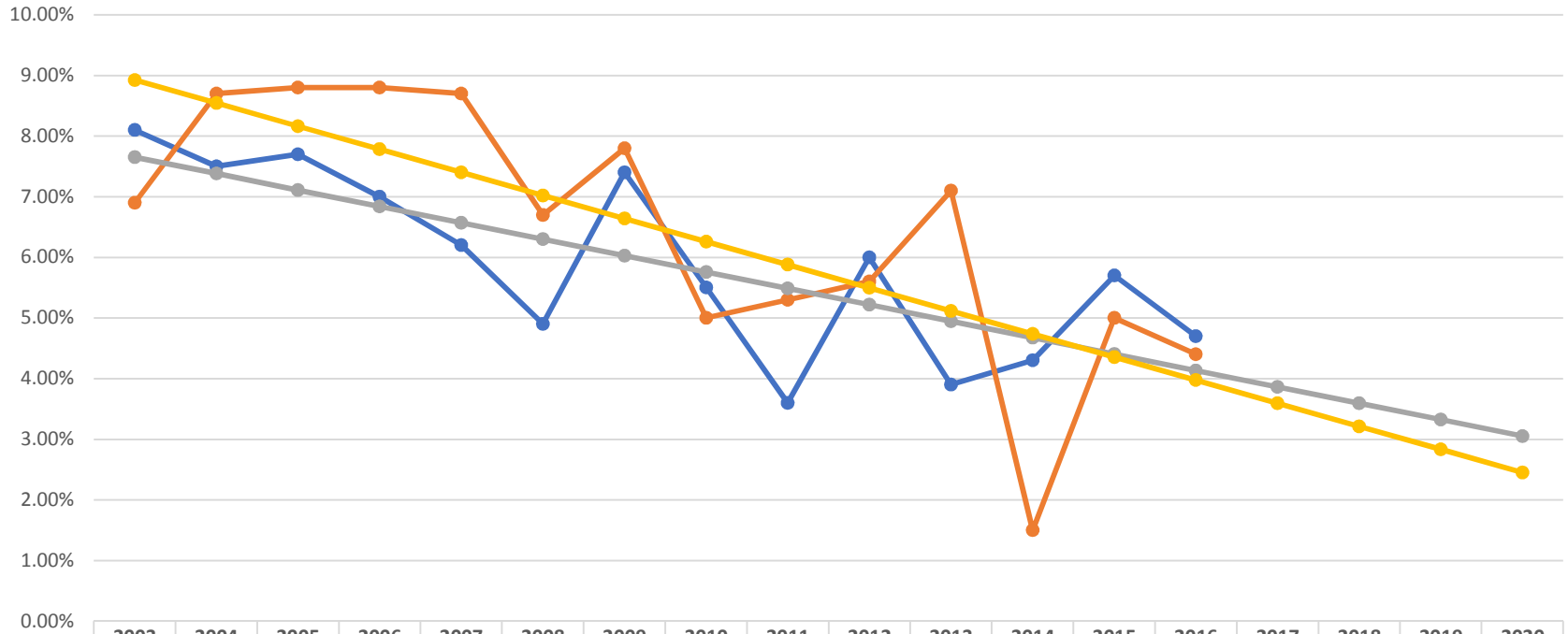


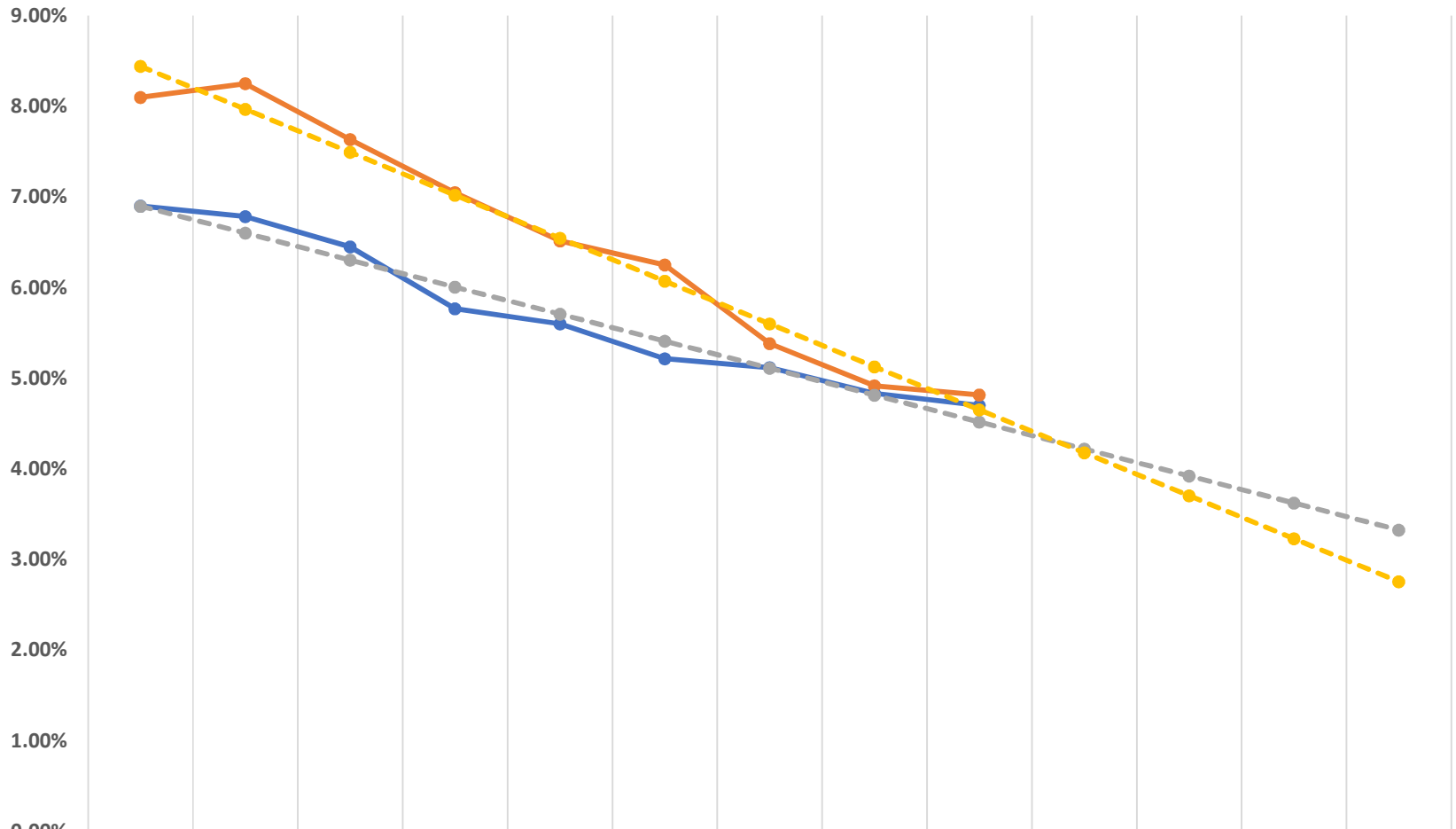
**NHE and Vermont (2003 - 2016 Actuals)
NHE and Vermont NPR (2017 - 2020 Projected)**



	2003	2004	2005	2006	2007	2008	2009	2010	2011	2012	2013	2014	2015	2016	2017	2018	2019	2020
— National NHE	8.10%	7.50%	7.70%	7.00%	6.20%	4.90%	7.40%	5.50%	3.60%	6.00%	3.90%	4.30%	5.70%	4.70%				
— Vermont NPR	6.90%	8.70%	8.80%	8.80%	8.70%	6.70%	7.80%	5.00%	5.30%	5.60%	7.10%	1.50%	5.00%	4.40%				
— NHE Trend	7.65%	7.38%	7.11%	6.84%	6.57%	6.30%	6.03%	5.76%	5.49%	5.22%	4.95%	4.68%	4.40%	4.13%	3.86%	3.59%	3.32%	3.05%
— NPR Trend	8.93%	8.54%	8.16%	7.78%	7.40%	7.02%	6.64%	6.26%	5.88%	5.50%	5.12%	4.74%	4.36%	3.97%	3.59%	3.21%	2.83%	2.45%

—● National NHE
 —● Vermont NPR
 —● NHE Trend
 —● NPR Trend

**NHE and Vermont NPR 6 Year Rolling Average (2008 - 2016 Actuals)
NHE and Vermont NPR (2017 - 2020 Projected)**

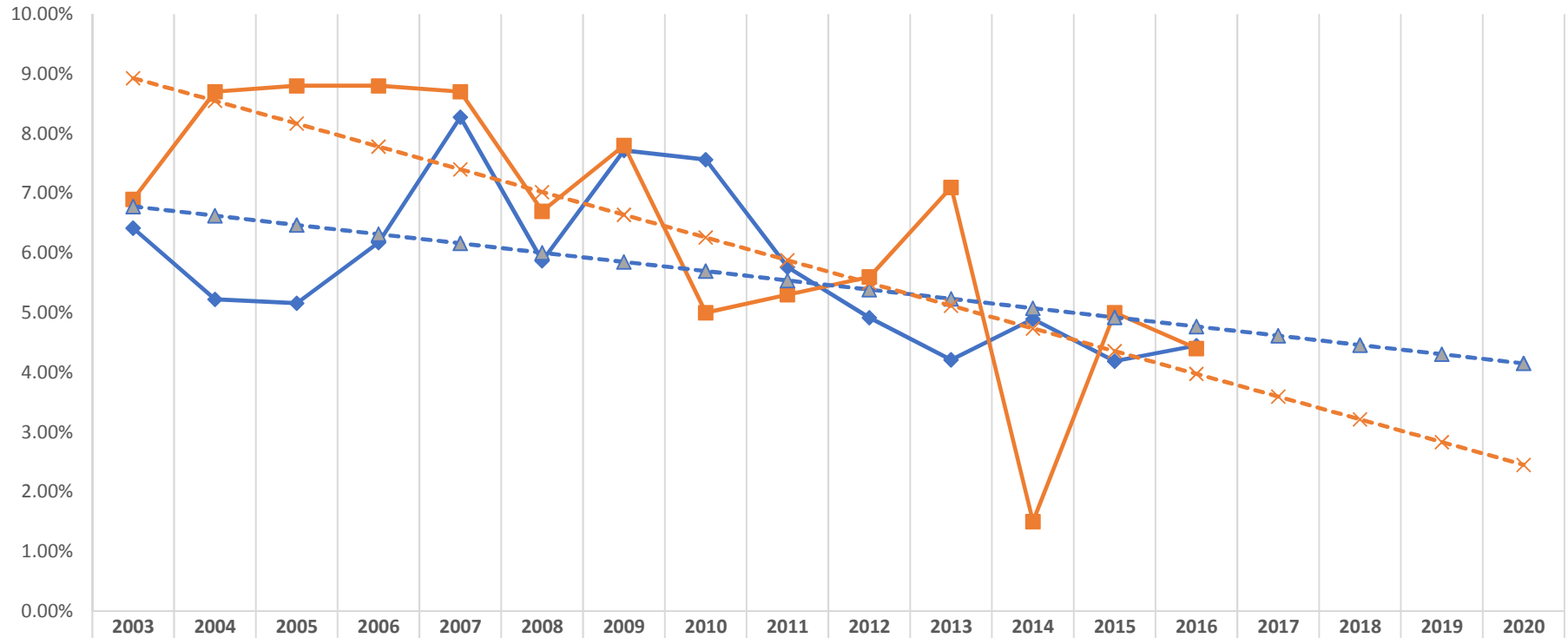


	2008	2009	2010	2011	2012	2013	2014	2015	2016	2017	2018	2019	2020
National NHE	6.90%	6.78%	6.45%	5.77%	5.60%	5.22%	5.12%	4.83%	4.70%				
Vermont NPR	8.10%	8.25%	7.63%	7.05%	6.52%	6.25%	5.38%	4.92%	4.82%				
NHE Trend	6.90%	6.60%	6.30%	6.01%	5.71%	5.41%	5.11%	4.81%	4.52%	4.22%	3.92%	3.62%	3.33%
NPR Trend	8.44%	7.97%	7.49%	7.02%	6.55%	6.07%	5.60%	5.12%	4.65%	4.18%	3.70%	3.23%	2.76%

—●— National NHE
 —●— Vermont NPR
 -●- NHE Trend
 -●- NPR Trend

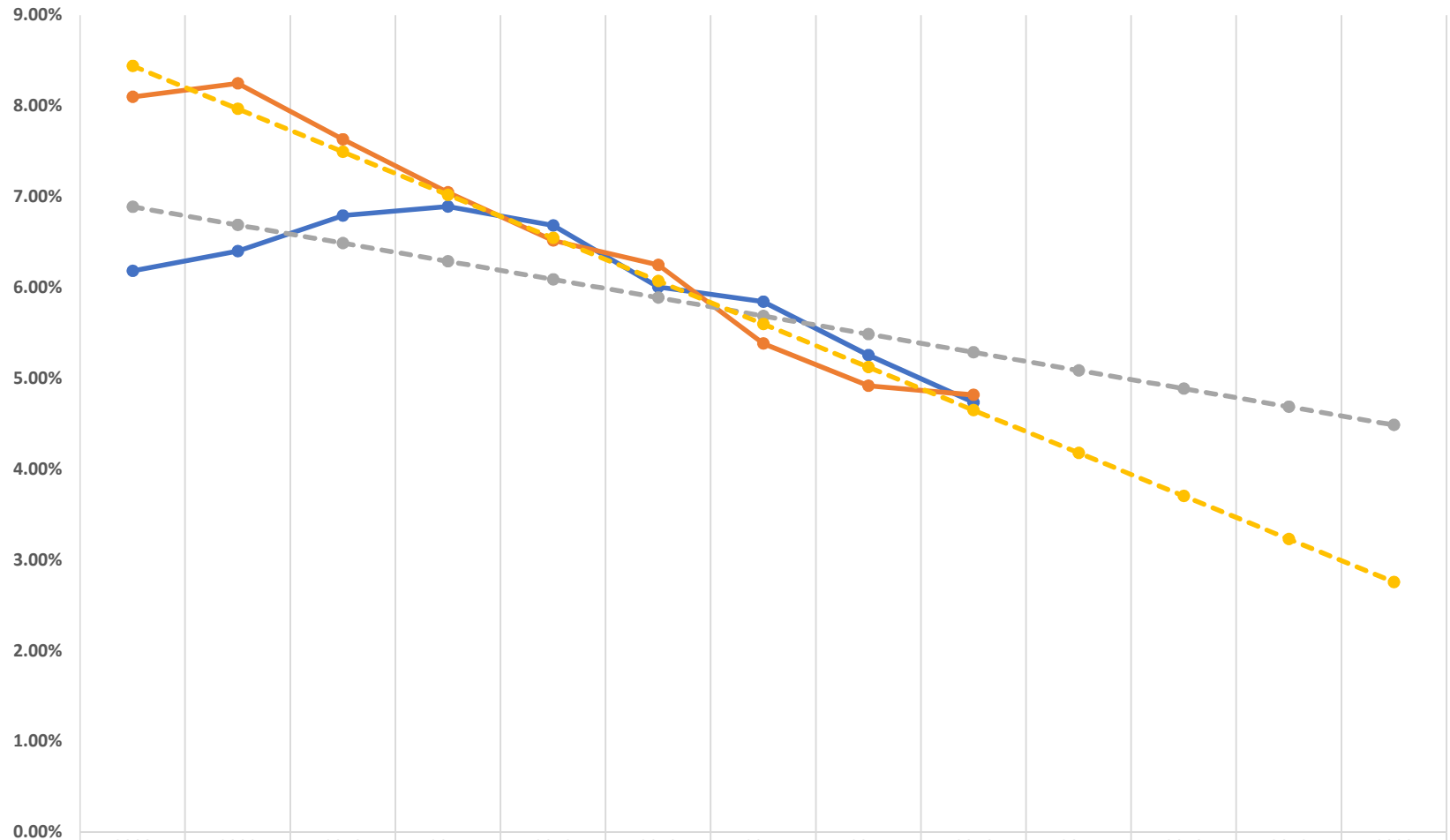
US HOSPITAL CPI AND VERMONT NPR (2003 - 2016 ACTUAL) US HOSPITAL AND VERMONT NPR (2017 - 2020 PROJECTED)

◆ US Hospital CPI
 ■ Vermont NPR
 ▲ CPI Trend
 ✕ NPR Trend



◆ US Hospital CPI	6.41%	5.22%	5.16%	6.17%	8.27%	5.87%	7.72%	7.56%	5.76%	4.91%	4.21%	4.89%	4.19%	4.45%				
■ Vermont NPR	6.90%	8.70%	8.80%	8.80%	8.70%	6.70%	7.80%	5.00%	5.30%	5.60%	7.10%	1.50%	5.00%	4.40%				
▲ CPI Trend	6.78%	6.62%	6.47%	6.31%	6.16%	6.00%	5.85%	5.69%	5.54%	5.39%	5.23%	5.08%	4.92%	4.77%	4.61%	4.46%	4.30%	4.15%
✕ NPR Trend	8.93%	8.54%	8.16%	7.78%	7.40%	7.02%	6.64%	6.26%	5.88%	5.50%	5.12%	4.74%	4.36%	3.97%	3.59%	3.21%	2.83%	2.45%

U.S. Hospital CPI and Vermont NPR 6 Year Rolling Average (2008 - 2016 Actuals)
U.S. Hospital CPI and Vermont NPR (2017 - 2020 Projected)



US Hospital CPI	6.18%	6.40%	6.79%	6.89%	6.68%	6.01%	5.84%	5.26%	4.74%				
Vermont NPR	8.10%	8.25%	7.63%	7.05%	6.52%	6.25%	5.38%	4.92%	4.82%				
CPI Trend	6.89%	6.69%	6.49%	6.29%	6.09%	5.89%	5.69%	5.49%	5.29%	5.09%	4.89%	4.69%	4.49%
NPR Trend	8.44%	7.97%	7.49%	7.02%	6.55%	6.07%	5.60%	5.12%	4.65%	4.18%	3.70%	3.23%	2.76%

—●— US Hospital CPI
 —●— Vermont NPR
 -●- CPI Trend
 -●- NPR Trend