

Green Mountain Care Board Psychiatric Inpatient Capacity Planning Update June 12, 2019

Anna T. Noonan, RN, BSN, MS
President and COO
Central Vermont Medical Center

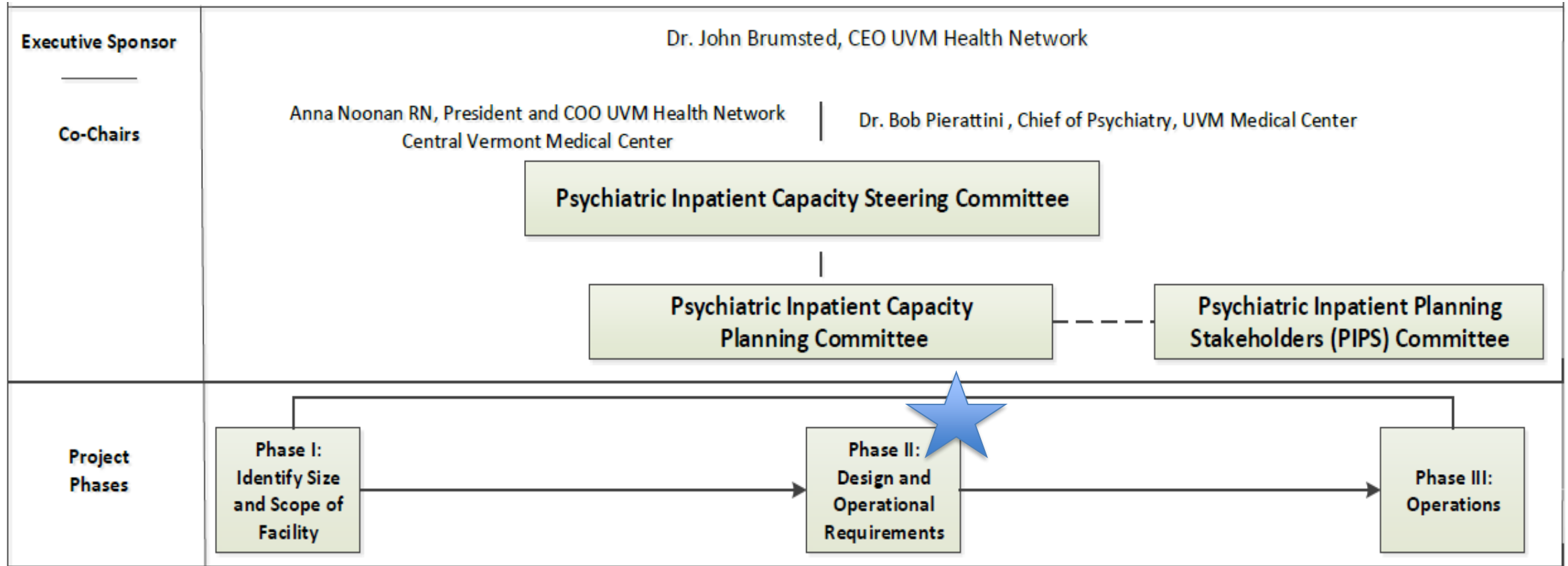
UVM Health Network Psychiatric Inpatient Capacity (PIC) Aim Statement

“Provide the analysis, engagement, and planning necessary to design and create a UVM Health Network inpatient psychiatric facility/unit that will substantially improve access to inpatient mental health care as part of an integrated system of care in Vermont.”

Psychiatric Inpatient Facility Planning

- Design and create a UVM Health Network inpatient psychiatric facility/unit on the Central Vermont Medical Center Campus that will “substantially improve access to inpatient mental health care as part of an integrated system of care in Vermont.”
- Anchor planning in data-driven, evidence-based process.
- Provide a forum for interested stakeholder input to inform the planning process: Psychiatric Inpatient Planning Stakeholders (PIPS) Committee created. Quarterly meetings scheduled through planning process.
- Create other opportunities to share information publicly, including community forums, legislative briefings, media relations, public reporting, etc.

Planning Process Supporting Structure

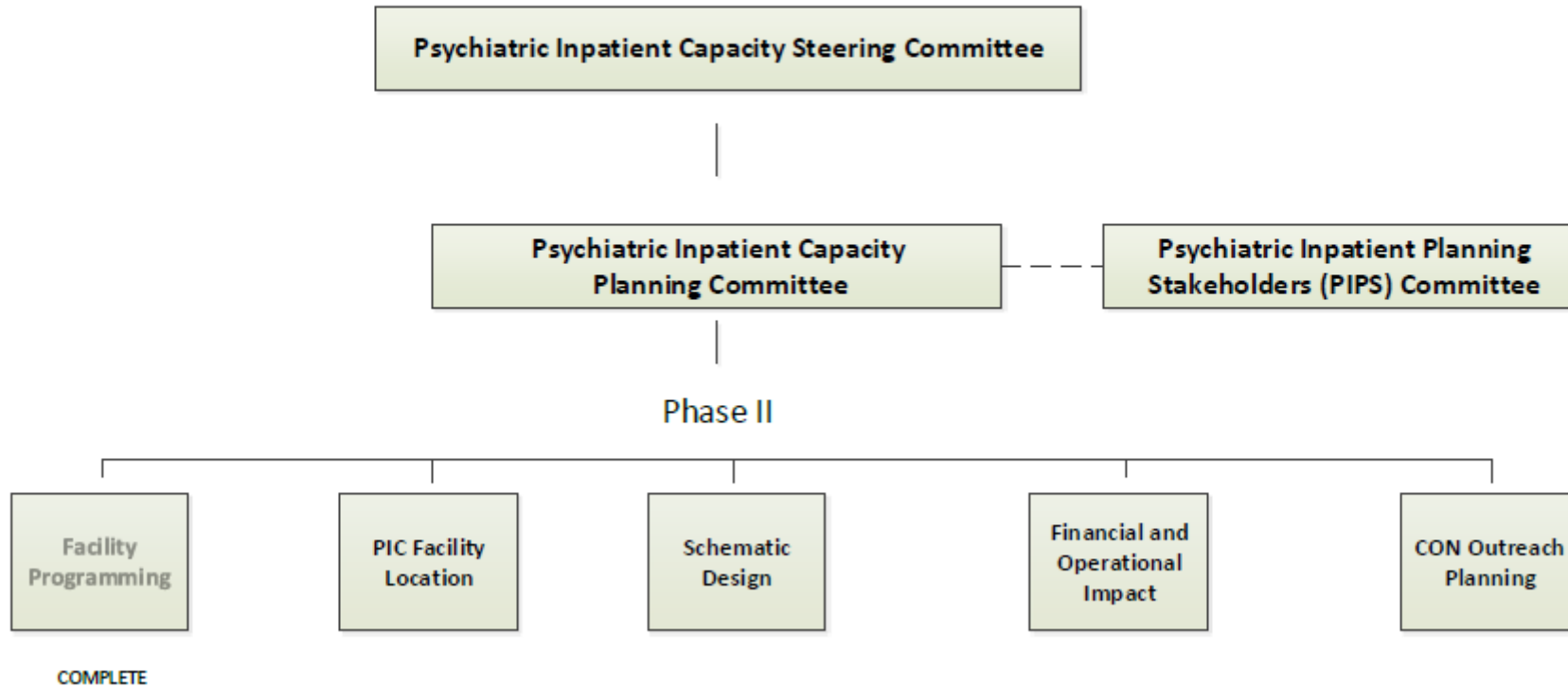


Planning Process Phase II Structure

Dr. John Brumsted, CEO UVM Health Network

Anna Noonan RN, President and COO UVM Health Network
Central Vermont Medical Center

Dr. Bob Pierattini, Chief of Psychiatry, UVM Medical Center



Project Timeline

Timeframe	Milestone
May, 2019	Facility Programming Complete
June, 2019	PIC Facility Location Identified
August, 2019	Schematic Design Package Complete
September, 2019	Business Plan Complete and Approved
December, 2019	CON Submitted

Space and Facility Programming



Goal

Identify the space and facility requirements to support the care provided to people receiving adult inpatient psychiatric services at Central Vermont Medical Center

Process

- Three cross-organizational and multi-disciplinary workgroups established:
 - Tier 1, Tier 2 and Tier 3, Intake area
 - 48 individuals invited to participate
- Each workgroup met for three, two-hour sessions, facilitated by Halsa Advisors. The workgroups commenced on March 18, 2019 and completed on May 10, 2019.
- Individual interviews conducted to determine impact on ancillary services: Nutrition, Pharmacy, Environmental Services
- Two site visits to psychiatric facilities recently constructed/renovated

Workgroup Participants

- Peer Advocates
- Patient and Family Advisor
- Nursing Staff
 - Inpatient Psychiatry
 - Emergency Department
- Mental Health Technicians
- WCMH Crisis Clinicians
- Psychiatrists
- Emergency Medicine Attending Physician
- Social Work
- Group Therapists
- Facilities
- Quality
- Business Planning
- Nursing Leadership
- Architects
- Halsa Advisors/Facilitators

Programming Outcome

- Operational Plan: Contains the operational and program requirements to including patient, family and staff design criteria; patient workflows; required support services
- Staffing Plan: Contains the staffing model for each functional area including staff roles and numbers.
- Space Table: Contains space requirements for each functional area with a calculation of square footage.

Next Steps

- Identify facility location
- Begin schematic design
- Financial and operational impact analysis
- Continued outreach and engagement

Questions

