
THE
University of Vermont
MEDICAL CENTER

By Electronic Mail & U.S. Mail

November 16, 2023

Ms. Donna Jerry
Senior Health Policy Analyst
Green Mountain Care Board
144 State Street
Montpelier, VT 05602
Donna.Jerry@vermont.gov

Re: Docket No. GMCB-004-23con, Development of Outpatient Surgery Center on Tilley Drive, Project Cost: \$129,640,703

Dear Ms. Jerry:

The University of Vermont Medical Center Inc. (“UVM Medical Center”) hereby responds to the Green Mountain Care Board’s (“Board”) Requests for Additional Information Q.006, dated August 25, 2023, regarding the above-referenced project.

Risk Assessment Factors

- 1. The Risk Assessment submitted with UVMMC’s application identifies UVMMC’s high inpatient bed census as a risk factor and states that the modeling did not attempt to consider whether UVMMC’s inpatient bed capacity will be sufficient to accommodate the needs of all UVMMC’s inpatient care and surgical recoveries. Explain in detail how UVMMC’s sustained high inpatient census will impact the success of the outpatient surgery center project and provide details on the contingency plan for addressing this stated risk factor.**

Response:

UVM Medical Center’s high inpatient bed census was identified as a risk factor in the Business Plan for the OSC project because the project pro forma includes revenue and costs resulting from approximately 500-700 incremental inpatient surgeries per year in project years 2-5,¹ and a

¹ As UVM Medical Center explained in its CON Application, the operating room (“OR”) demand model supporting the proposed OSC project predicts growth in both inpatient and outpatient surgery volume; and the proposed OSC project will free up OR capacity for incremental inpatient surgeries demand at UVM Medical Center’s Main Campus, because the OSC will host some outpatient surgeries that are currently performed in the Main Campus ORs.

sustained high inpatient census could impact UVM Medical Center's ability to perform incremental inpatient surgeries if the hospital lacks sufficient beds to accommodate the associated Day of Surgery Admissions ("DOSAs"). This might result in delayed care for some patients and fewer incremental inpatient surgeries over a twelve-month period, which would impact the OSC project's margin.

We do not, however, consider high inpatient census a serious risk to the OSC project's viability. The number of inpatient beds necessary to support the projected incremental inpatient surgeries is estimated at only 5.6 beds in FY26, increasing to 8.1 beds by FY29.²

UVM Medical Center relies on an experienced Operations Team to manage bed availability each day, and it is currently implementing several broader initiatives to alleviate inpatient census pressure by reducing length of stay through improved efficiency in discharge and bed turnover procedures. For example, UVM Medical Center is working to improve and expedite discharge planning procedures for patients who need continued subacute care at a skilled nursing or other facility by strengthening communication and collaboration with such facilities through outreach to their admission liaisons and nursing directors. On an average day, approximately fifty (50) of UVM Medical Center's inpatient beds are occupied by patients awaiting discharge to another facility for subacute care.

Finally, the OSC project will itself reduce inpatient census pressure in that 23-hour observation beds will be available at the OSC for use by patients who would currently require beds at the Main Campus. This will help the Operations Team maintain OR throughput on days of high inpatient census.

For these reasons, we do not expect high inpatient census to substantially reduce incremental inpatient surgeries. We note, however, that the project would sustain a positive margin even if incremental inpatient surgeries were substantially reduced. For example, if incremental inpatient surgeries were twenty percent (20%) lower than projected volumes shown in the project pro forma, the projected margin in FY26 would be reduced by an estimated \$2.2M, and the projected margin in FY27 would be reduced by an estimated \$2.5M. If incremental inpatient surgeries were fifty percent (50%) lower than projected volumes shown in the project pro forma, the projected margin in FY26 would be reduced by an estimated \$5.5M, and the projected margin in FY27 would be reduced by an estimated \$6.3M. These estimated margin reductions resulting from lower than projected incremental inpatient surgeries allow for a healthy overall incremental margin.

Utilization

- 2. Attached is an Excel Workbook. Enter (or confirm) the inputs requested in Table 1a, 1b and 2 (in the "ENTER INPUTS HERE") tab. These inputs will auto-populate UVMC's OR capacity and volume estimates under current capacity**

² Based on CY22 average length of stay (2.9 days) for DOSAs at the Main Campus, 484 incremental IP surgeries in FY26, and 696 incremental IP surgeries in FY29.

between 2019 and 2029. The current inputs were taken from UVMMMC's OSC application. Please confirm they are correct or replace them with updated estimates.

Response:

Please find attached the Board's Workbook including updated volume and capacity data as requested. We have provided actual volumes for the twenty-five (25) rooms for CY 2019-2022, and CY 2023 volumes annualized based on actual volumes for 1/1/23 – 8/31/23. We have provided forecasted volumes for CY 2024 – 2029 consistent with Scenario 3 of UVM Medical Center's OR Demand Model, which uses FY19 as the baseline year, as described in the CON Application and reflected in the project pro forma.

We have not modified the Workbook formulas (as instructed). **We note, however, that the Workbook's output predicting less OR demand than UVM Medical Center's OR Demand Model predicts (as reported in the CON Application) is invalid due to a material error in the Workbook** -- namely, the Workbook does not include OR turnover time in the calculation of percent OR utilization. As we further discuss in the below response to Q.3, UVM Medical Center's OR Demand Model as described in the CON Application uses a seventy-five percent (75%) OR utilization benchmark and includes turnover time in OR utilization. UVM Medical Center's consultant Halsa Advisors, which recommended the seventy-five percent (75%) utilization benchmark, has confirmed that turnover time must be considered part of OR utilization for purposes of a valid "apples to apples" comparison to this benchmark. Turnover time is also considered OR utilization in a Vizient benchmarking study we discuss in response to Q.3 below.

We also note the following:

- UVM Medical Center's OR capacity has varied over the period 2019-2023, but the Board's Workbook assumes capacity is constant from year to year. As noted in our response to the Board's Q.002, Q.25, the Fanny Allen Campus ORs were closed due to air quality issues from December 2 - 31, 2019, and from November 2020 to February 2022. In 2020, some ORs were closed or underutilized due to impacts of the COVID pandemic and the October 2020 cyberattack on UVM Medical Center.
- The 2023 annualized volumes reported in the Board's Workbook are not fully representative of current patient demand for surgeries. UVM Health Network's Periop Path Forward initiative for FY23 was successful in instituting a consistent methodology and centralized reporting for surgical backlogs across service lines for UVM Medical Center. As of Sept 8, 2023, 441 patients were on UVM Medical Center's surgical schedules more than 60 days out, with 180 of those patients on UVM Medical Center's surgical schedules more than 90 days out. As of November 3, we had 17 patients pending scheduling, 341 patients waiting more than 90 days, and 375 patients waiting 60-90 days
- It is unclear why the Board's Workbook shows OSC volumes in years prior to the date the OSC would open in 2025 if approved.

3. Explain in detail how UVMMC determined its capacity inputs, particularly average length of outpatient surgeries and turnover time, and provide evidence that these inputs are consistent with industry standards or benchmarks for outpatient surgery centers.

Response:

UVM Medical Center used case length inputs, turnover time inputs, and a seventy-five percent (75%) operating room (“OR”) utilization benchmark recommended by its consultant Halsa Advisors (“Halsa”) in the demand modeling supporting and referenced in the CON Application.

UVM Medical Center obtained further confirmation of the turnover time inputs and the utilization benchmark from a 2022 Vizient³ benchmarking survey (the “Vizient Study”) made available to UVM Medical Center as a non-participating Vizient member in late 2022. Vizient conducted this survey in response to a prior lack of publicly available benchmarks for operating room operational metrics. Thirty-four (34) Vizient members participated in the survey based on their 2021 operating room data. Seventy eight percent (78%) of survey participants were teaching hospitals, and fifty-six percent (56%) had a Level 1 Trauma designation.

Survey participants operated and reported data with respect to fifty-nine (59) distinct surgical sites of service in three cohorts -- nineteen (19) ambulatory surgery centers, twenty-three (23) hospital departments with inpatient (IP) and outpatient (OP) combined annual case volumes of 10,000 or more, and seventeen (17) hospital departments with IP and OP combined annual case volumes of less than 10,000. Results of the Vizient Study, which we discuss below, are attached hereto as Exhibit A.

Inpatient

Case length: We used the actual average case length of inpatient surgeries by service line at UVM Medical Center’s Main Campus in FY19 for eighteen (18) service lines (and sub-service lines within Orthopedics). We assumed there will be no change in average inpatient surgical case length within each service line over the projection period.

We note that the model within the Board’s Workbook discussed in response to Q.2 above differs from UVM Medical Center’s model in that the case length input is the overall average for all surgeries, which could change due to variations in the volume of cases within each service line over the projection period.

Turnover time: We used the UVM Medical Center’s average turnover time at its Main Campus in FY19 of thirty-seven (37) minutes from wheels-out to wheels-in. We expect no material facility changes with respect to the patient flow, functional spaces, clinical capacities, or staffing models over the projection period that would drive any material change in room turnover time. Halsa advises that thirty-seven (37) minutes reflects reasonable operational performance for a predominantly inpatient surgical department at a hospital like UVM Medical Center – i.e. an

³ Please see the Vizient website for information about Vizient’s products and services: [Vizient Inc. Member-driven healthcare performance improvement](#). UVM Medical Center has access to the Vizient survey results as a Vizient member.

academic medical center that is a Level 1 Trauma Center, and contends with certain facility shortcomings (shortfalls in equipment storage space near the ORs, undersized sterile cores, non-integrated sterile cores, non-uniform sized ORs, and multiple undersized ORs).

The Vizient Study reported average room turnaround time for the cohort of hospital surgical departments performing 10,000 or more surgeries per year (both IP and OP surgeries). At thirty-seven (37) minutes, UVM Medical Center falls between the Vizient Study 50th percentile (41 minutes) and 75th percentile (32 minutes) for this cohort.

Outpatient

Case length: Based on the assumption that there will be no change in outpatient surgical case length within each specialty when cases are performed at the OSC site of service -- the same surgeons, surgical teams, residents, and anesthesiologists will be completing substantially similar cases on substantially similar patients using similar instruments and equipment -- we used the actual average length of outpatient surgeries performed at UVM Medical Center's Main Campus and Fanny Allen Campus during FY19 for each of eighteen (18) service lines (and sub-service lines within Orthopedics).

The only exception to our assumption that case length will remain the same is outpatient total joints. In FY19, the average case length for total joints was 169 minutes, and all total joint surgeries were performed at the Main Campus as inpatient surgeries. Once the OSC is in operation, UVM Medical Center will continue to schedule the more complex total joint surgeries as inpatient surgeries at its Main Campus, while less complex total joint surgeries will be scheduled as outpatient surgeries at the OSC. As a result, we assumed the average case length for outpatient joint surgeries to be performed at the OSC will be shorter – an estimated 140 minutes -- than the average for all total joint surgeries in FY19.

UVM Medical Center is not aware of any industry standard or benchmark for average case length at an OSC. Individual case length is appropriately dependent on each patient's specific circumstances, the pace and discretion of the surgeon, and average case length for an OSC will vary depending on the facility's case mix.

Turnover time: We used a turnover time of twenty-five (25) minutes from wheels-out to wheels-in for all specialties. This is a benchmark Halsal recommended based on its experience with similar OSCs. It is also (coincidentally) the actual average turnover time for UVM Medical Center's Fanny Allen Campus outpatient surgery department in FY19.

The twenty-five (25) minute turnover time input is slightly conservative in that UVM Medical Center expects to improve upon the Fanny Allen Campus experience at the OSC. The Fanny Allen Campus provides inadequate prep and recovery slots to support the ORs. The OSC has several design elements intended to address bottlenecks experienced at the Fanny Allen Campus. The OSC design also includes sterile instrument setup rooms where OR techs can begin setting up the next case while the current case and initial room cleaning occur in parallel in the adjacent OR, which is an innovative operational model in OR nursing.

Halsa recommends a twenty-five (25) minute benchmark for room turnover at an OSC associated with an academic medical center based on two considerations: first, Halsa's experience with and knowledge of a number of teaching institutions' OSCs/ASCs, and second, a conservative but realistic approach to planning.

Halsa has experience with multi-specialty stand-alone OSCs/ASCs operated by teaching institutions with wheels-out to wheels-in turnover times ranging from 23.5 – 38 minutes. According to Halsa, most new facilities experience performance close to the twenty-five (25) minute benchmark. Facilities at the high end of the range tend to be atypical due to, for example, an inefficient floor plan, or understaffing.

Finally, Halsa advises that UVM Medical Center's OSC should not be compared to ASCs/ASCs that are physician owned and do not participate in the teaching of residents or students with respect to either case length or turnover time. Both case length and turnover time may increase when student learners participate. Further, the UVM Medical Center's OSC plans to complete more complex cases than most physician owned OSCs, where financial incentives tend to favor quick, simple cases and discourage longer, more complex cases.

The Vizient Study reported average room turnaround time for the cohort of ambulatory surgical centers operated by hospitals. For these sites, organizations in the 50th percentile of respondents reported turnaround times of twenty-five (25) minutes, and the 75th percentile reported twenty-two (22) minute turnaround times.

OR Utilization Benchmark

UVM Medical Center used a seventy-five percent (75%) benchmark for OR utilization in its demand modeling. Halsa recommended this benchmark, and the Vizient Study confirms its validity. In the Vizient Study, the 50th percentile (all cohorts) for OR utilization including turnaround time is sixty-four percent (64%) utilization, and the 75th percentile (all cohorts) is seventy-seven percent (77%) utilization.

4. Provide evidence that UVM Medical Center has experienced a shortage of ORs over the past several years, through longer wait times or other available metrics.

Response:

Historically, UVM Medical Center has not collected data on wait times for surgical procedures.⁴ In addition, any wait time data for the years 2020-2022 would be of limited value because of (a) Covid-19 related restrictions on both demand and capacity, and (b) the repeated temporary closure of the ORs on the Fanny Allen Campus due to air quality concerns during that time period.

With the most significant effects of the pandemic behind us, and the availability of all the UVM Medical Center's existing ORs, we have recently implemented a consistent methodology and centralized reporting for surgical waitlists across service lines at UVM Medical Center. Those

⁴ The appropriate wait time for surgery is difficult to define because it differs for each patient based on the patient's acuity, comorbidities, and preference.

measures show that our surgical backlog is long and growing, which is consistent with the strong but anecdotal evidence of backlogs that was previously available.

From May – October 2023, UVM Medical Center operated the twenty-five ORs and procedure rooms referenced in UVM Medical Center’s OR demand model⁵ at full capacity. These rooms ran at an average seventy-five percent (75%) utilization rate⁶ from May - September, which is the benchmark utilization rate UVM Medical Center used in its OR demand model supporting the CON application. In October, the average utilization rate hit seventy-seven percent (77%).

Even as UVM Medical Center operates at full capacity, as of Sept 8, 2023, 180 patients were on UVM Medical Center’s surgical schedules more than 90 days out, and 441 patients were on UVM Medical Center’s surgical schedules more than 60 days out. Those wait times are unacceptable for most patients and providers alike, and they have unfortunately only grown in the last two months. As of November 3, we had 17 patients pending scheduling, 341 patients waiting more than 90 days, and 375 patients waiting 60-90 days, for a total of 733 patients in our backlog, defined as patients waiting more than 60 days plus pending patients.

5. Under what circumstances, if any, would UVMMC utilize these new outpatient ORs for inpatient surgeries, and explain how those decisions would be made.

Response:

UVM Medical Center’s demand modeling for the OSC does not assume the OSC will be used to perform surgeries on inpatients or patients known in advance to require admission after their intervention. UVM Medical Center does not plan to use the OSC for inpatient surgeries as part of normal operations.

In the event of an emergent situation, an incident command structure would be convened to manage all institutional resources in response to the emergency. The Outpatient Surgery Center could be used in some fashion to support the emergency response.

6. Explain in detail whether UVMMC performed an assessment of available surgical capacity at other hospitals in or near its service area. Explain and quantify the impact the OSC may have on other community hospitals offering the same outpatient surgeries.

Response:

UVM Medical Center’s demand model for the OSC project assumes that UVM Medical Center’s market share of outpatient surgeries stays the same,⁷ and that assumption informs the project pro forma, which does not include volumes UVM Medical Center would capture from other hospitals. Other hospitals in the region should not expect any reduction in outpatient surgeries

⁵ Five ORs at the Fanny Allen Campus, eighteen ORs at the Main Campus, and Procedure Rooms 1 & 2 at the Main Campus.

⁶ Utilization includes turnover time.

⁷ As previously explained, UVM Medical Center’s model projects growth in demand for surgeries at UVM Medical Center based on growth and demographic change in the population that currently receives care at UVM Medical Center, as well as certain other factors expected to influence that population’s need for surgeries.

due to the opening of the OSC. In fact, UVM Medical Center’s demand model assumes that neighboring hospitals will have adequate capacity to accommodate forecasted growth in demand for outpatient surgeries in their own service areas.

The project planning team performed an assessment of available surgical capacity at Porter Medical Center (“Porter”) and Central Vermont Medical Center (“CVMC”) as part of its initial work in 2021 with respect to replacement of the Fanny Allen Campus ORs. The planning team does not have access to the data it would need to assess available surgical capacity at other hospitals outside the UVM Health Network.

Today, UVMHC-based providers are using available OR time at both Porter and CVMC to provide surgical access for patients. We anticipate this collaboration across sites will continue in the future, helping provide access as close to home as possible for patients and maximally leveraging UVMHN assets.

However, capacity at Porter and CVMC is limited. Porter has only two ORs and one procedure room. In UVM Health Network’s Response to GMCB Requests for Information, Docket No. GMCB-008-21con, Collaborative Surgery Center, Development of an Outpatient Surgery Center with Four Operating Rooms in Colchester (December 8, 2021), we projected 1,743 surgical cases (364 IP + 1,379 OP) would be conducted at Porter in CY22. Actual Porter volumes in 2022 were 2,139. For 2023, we projected 1,761 surgical cases (1,389 OP + 372 IP) would be conducted at Porter. Porter is on pace to complete 2,196 surgical cases in CY23.

CVMC’s actual IP + OP surgical volumes in 2022 and 2023 (annualized) have also exceeded projections submitted to the GMCB in 2021. Surgery volumes in CY22 were 3,995 compared to a projection of 3,774 (538 IP + 3236 OP). For 2023, CVMC’s annualized volumes are expected to reach 4,111 compared to a projection of 3,931 (632 IP + 3299 OP).

The limited capacity currently available at Porter and CVMC does not substitute for the proposed OSC capacity. The OSC is intended to meet current and future needs of UVM Medical Center’s patients at a location close to UVM Medical Center. The OSC will keep care local for residents of the Burlington area, which may be especially important for those for whom transportation from Burlington to Middlebury or Berlin is a hardship. Further, the OSC’s staffing model provides flexibility for surgeons to provide services at both UVM Medical Center’s Main Campus and the OSC, including by dividing a day between these two sites when necessary.

Architectural/Equipment

- 7. Explain in detail existing site conditions and any mitigation required on the 13.5 acres where the OSC will be constructed and provide a breakdown of the site costs totaling \$4.5 million with an explanation of the biggest drivers of cost. Explain the need for the construction of a five-foot retaining wall, two gravel wetland areas, etc. listed on Page 17 of the application.**

Response:

EXISTING SITE CONDITIONS AND MITIGATION

The OSC would be constructed on a 13.5-acre parcel located on the north side of Tilley Drive in the Mountain View Business Park in South Burlington. The site slopes from west to east and is mostly open landscape with hedgerows along the north and east property lines and two Class III wetlands on the western side. It has Green Mountain Power (GMP) and Champlain Water District (CWD) easements running east-west bisecting the site. Municipal water and sewer, and electrical power services are all available at this site. Access to the site is via Tilley Drive at an existing curb cut.

The existing site conditions and needed mitigation for the proposed site of the OSC project involve environmental characteristics, physical utility encroachments, and permitting requirements which are described below.

Environmental Characteristics

Existing Grades

As noted, the site slopes from west to east with over thirty feet of grade change. There is a gentle ridge divide on the site where the approximate western third of the site slopes from north to southwest. There is shallow ledge in locations on the site. The remaining two thirds of the site are moderately sloping to the east. This elevation divide created a unique opportunity to tier the OSC building into two finish floor elevations into the landscape. The existing grades are steeper along the east side of the site, making Americans with Disabilities Act (ADA) accessibility more challenging. This resulted in placement of the main entrance of the building at the western portion of the site where the grades are not as steep and more conducive to meeting ADA parking and access needs. Several retaining walls were added to address ADA accessibility along walkways and in plaza areas that were needed as a result of the grading restrictions within the GMP/CWD utility easements. The site topography also allowed for a more efficient storm water treatment design as all the site runoff eventually flows to the low area along the east side of the site.

Wetlands

The two Class III wetlands on the west side of the site are non-jurisdictional to the State of Vermont. However, the City of South Burlington Land Development Regulations require projects to minimize wetland and wetland buffer impacts. The Development Review Board (DRB) did not accept the original site plan layout for this project and felt more needed to be done to minimize wetland impacts. The building could not move east because of the grades and the layout of the gravel storm water wetlands, the HVAC structures, and the City-required pedestrian path. This resulted in shifting the entry driveway east as much as physically possible, which required a five-foot segmented block retaining wall to minimize wetland impacts. The DRB approved this revised site plan layout as it minimized the wetland impacts.

Endangered Species

There is an endangered species (*Prunus americana*) present within the middle of the site. The Vermont ANR Fish & Wildlife Department required a Threatened & Endangered Species Takings Permit for this project. The site work required for this permit includes the removal and relocation of a portion of this species prior to construction and for five years of on-site monitoring.

Physical Utility Encroachments

As noted above, there is a 100-foot wide GMP easement with overhead electric transmission lines and a 30-foot wide CWD easement with an underground transmission waterline running east-west bisecting the site. Neither utility could be moved, which created design challenges. The site layout and grading design needed to incorporate the GMP pole locations and vertical clearances for the overhead lines. But the biggest issue was related to the waterline. The Champlain Water District gave direction to minimize utility crossings and would not allow any grade cut or fill of more than approximately one (1) foot over their line. This effectively split the site and pushed the large parking lot further north from the building. It also required splitting the gravel wetland storm water treatment practice into two separate systems and forced the placement of HVAC equipment: chillers, emergency generator, and oxygen storage area further away from the building than otherwise would have been required.

Also, these utility restrictions physically limited the ability to adjust grades and required placing several retaining walls at various locations on the site for providing ADA accessible pedestrian circulation. These retaining walls vary in height up to five feet and are located on the north and south sides of the building.

Permitting Requirements

The City of South Burlington DRB required the inclusion of several site features as part of Site Plan review in order to approve this project.

The DRB required the project to construct a multi-use path through the site. The location of the path was determined with input from the City and the neighbors and is located along the east side of the site. Given the tight site layout, it could not be placed uphill of the gravel wetlands storm water treatment practice for conventional impervious area treatment. The solution was to design a porous asphalt multi-use path, which the Vermont Department of Environmental Conservation (DEC) Storm water Division and the City deemed to be "pervious". The cost of installing porous asphalt is quite a bit more due to specialized mix design and construction installation procedures.

Extensive landscaping was required by the Land Development Regulations. Because the site borders residential properties to the west and north, the DRB required screening that consists of several berms and extensive landscaping. In addition, screening of the mechanical equipment along the eastern property line was required. These landscape plantings and berms increased the site impacts and costs.

The City Land Development Regulations required a public amenity be included on the site as part of Site Plan review. We worked with the City to include a pocket park located in line with the proposed recreation path. It includes seating, landscape plantings, and a gravel area.

Storm water

The Vermont Department of Environmental Conservation (DEC) Stormwater Division requires all projects with operational stormwater discharge permit jurisdiction to evaluate the treatment strategy with a tiered practice approach. This project required a DEC operational stormwater

permit. The approved stormwater treatment for the OSC project consists of two gravel stormwater wetlands for handling runoff from the site. As previously mentioned, two separate gravel stormwater wetlands were needed because of the existing GMP and CWD utility easement grading restrictions that effectively divide the property.

Water

The building would typically need only a single water service to the mechanical room on the east side of the building. The South Burlington Water Department requires that a fire department connection be placed near the building's main entrance, which is on the west side of the building. They also require that a hydrant be installed within 100 feet of the fire department connection. That prompted the design of a second waterline on the site, which increased costs.

All of these site conditions and required mitigation contributed to the site development costs for the OSC project.

BREAKDOWN OF SITE COSTS

Below is a breakdown of the site construction costs for this project.

Site work - General	\$233,970.00
Site work - Demolition	\$24,226.00
Site work - Preparation	\$72,439.00
Site work - Erosion Control	\$17,500.00
Site work - Earthwork	\$403,440.00
Site work - Building	\$822,350.00
Site work - Roads & Walks	\$418,373.00
Site work - Topsoil	\$105,758.00
Site work - Utility Structures	\$219,713.00
Site work - Drainage & Storm	\$630,497.00
Site work - Water	\$94,557.00
Site work - Power & Comm Utilities	\$23,151.00
Site work - Energy & Fuel	\$14,968.00
Site work - Misc	\$89,702.00
Site work - Fences & Guard Rails	\$30,275.00
Site work - Signage & Signals	\$5,925.00
Site work - Furnishings & Equipment	\$80,725.00
Site work - Landscaping	\$551,052.00
Site work - Lawns	\$19,461.00
Paving & Surfacing	\$684,973.00
Grand Total:	\$4,543,055.00

The site improvements require a total disturbance area of nearly 10 acres, which has a significant impact on the site related costs for the project. The biggest drivers of the site costs as described above include earthwork that includes grading, building site work, wetlands mitigation,

landscaping, roads and walks, paving and surfaces, and stormwater: drainage, and storm and utility structures.

- 8. Explain whether an archeological survey of the site is required, and if so, identify the cost associated with the survey, and the line item where the survey cost is included in the total project cost.**

Response:

A Phase I and II archaeological survey was required for the northern portion of the site. Previous archaeological surveys were done by others for the southern portion of the site. The results of the Phase I and II survey were no findings requiring further archaeological study or action.

The cost for this archaeology work was \$29,588. It is included in Table 1, Related Project Costs, Line 3.

- 9. Of the total 84,006 gross square feet, the shell space is approximately 9,367 square feet. Identify the cost per square foot associated with the shell space and the total dollar amount associated with the construction of the shell space.**

Response:

UVMMC estimates construction costs on a Gross Square Footage basis. As shown in the CON Application, Figure 1.15 (OSC Floor Plan: Ground Floor Level), the Total Gross Square Footage of the proposed shell space is 9,975 square feet.

Shell Space Base Cost \$3,533,800

Building Gross Square Footage: 9,975 sf

Shell Space Cost per Building Gross Square Foot = \$354.26/sf

- 10. UVMMC is planning to purchase three large C-arms at an individual cost of \$250,000 each and seven mini C-arms for a total cost of \$680,000. Explain in detail the need for 10 C-arms (three large C-arms and seven mini C-arms) for eight ORs.**

Response:

Please find attached as Exhibit B an amended equipment list, which includes the following corrections:

- The OSC equipment planning workgroup and Radiology leadership reviewed all C-arm entries. This review confirmed that three (3) large C-arms are needed as previously reported, but only four (4) mini-C-arms are needed, rather than seven (7) mini-C-arms as previously reported. Further, it was confirmed that two (2) large C-arms and three (3) mini-C-arms will be moved to the OSC from the Fanny Allen Campus ORs, and the list of equipment to be purchased for the OSC should have included only one (1) large C-arm (estimated cost \$250,000) and one (1) mini-C-arm (estimated cost \$140,000). This reduces the estimated equipment cost by \$1,040,000.

- The equipment planning workgroup reviewed the entire equipment list and did not find any additional errors with respect to the amount or type of equipment required. We did identify, however, an understatement of total equipment costs by \$4,800 due to a clerical error.

Staffing

- 11. The Risk Assessment submitted with the application states that UVMMC’s inability to fully staff the new OSC is “a clear risk to the success of the project.” The application (page 2) represents that the new OSC will require 166 FTEs. Approximately half of these FTEs will transfer from the main campus and Fanny Allen. In addition, UVMMC will need to recruit new personnel to fill an additional 78 new positions to fully staff the OSC. Of the newly hired OSC staff, UVMMC projects that 25% of the RNs and 10% of the Techs will be Travelers. Furthermore, the Risk Assessment states, “UVMMC has also seen considerable clinical staff salary inflation; if this should continue it will negatively impact the projected OSC margins.”**
- a. Explain in much more detail UVMMC’s plan to address the significant challenge of recruiting adequate staff for the OSC.**

Response: UVM Medical Center and the UVM Health Network have implemented multiple initiatives that will support workforce recruitment and development for the OSC.

Talent Acquisition

We have invested in an enhanced talent acquisition program, which includes:

- Increased marketing with a focus on programmatic advertising, search engine marketing, Indeed and Glassdoor brand ads, Facebook and Indeed social outreach, and streaming radio;
- Increased presence at in-person job fairs;
- Investments in a more engaging UVM Health Network Careers website: [Careers - The University of Vermont Health Network \(uvmhealthnetworkcareers.org\)](https://www.uvmhealthnetworkcareers.org);
- Implementation of an expedited application process; and
- Hiring incentives for most positions: sign-on bonus, payment of relocation costs, enhanced employee referral bonus.

We are exploring and implementing other strategies to increase RN recruitment and retention -- for example, increasing the involvement of current staff in marketing outreach, and traveler conversion.

Workforce Development

UVM Health Network continues to pioneer innovative solutions designed to offer affordable and accessible career advancement opportunities for current employees and jobseekers.

The UVM Health Network's workforce development programs enable employees within the UVM Health Network to earn wages and benefits while pursuing advanced studies to further

their career – often with full tuition support or at no out-of-pocket cost. This approach provides flexibility for non-traditional learners, lowering the barriers people often face when trying to balance life, work, and continuing education.

The UVM Health Network and its partners offer multiple career pathway programs for current staff and external jobseekers, including but not limited to programs supporting LPN and RN licensure. A listing of many available programs can be found online at [Healthcare Education Reimagined: Enhancing UVM Health Network’s Workforce Development Initiatives – UVM Health Network \(uvmhealthimpact.org\)](https://www.uvmhealthimpact.org), and [Training Programs | Careers - University of Vermont Medical Center \(uvmhealthnetworkcareers.org\)](https://www.uvmhealthnetworkcareers.org). Please note that we are regularly in the process of updating these sites to include information about more recently initiated programs.

The following programs are especially relevant to workforce development for the OSC:

- UVM Medical Center offers a study stipend to LNAs who work part-time at the Medical Center while they are enrolled in a RN degree program and agree to work at UVM Medical Center as RNs for two years after they graduate and obtain licensure.
- A Vermont Agency of Health Services grant-funded ABSN (Accelerated Bachelor of Science in Nursing) Pathway Program allows UVM Medical Center employees with certain prior education to continue earning a salary while studying to complete an accelerated bachelor’s degree in nursing at Norwich University.
- A Vermont Agency of Health Services grant-funded Master of Science in Nursing (MSN) Nursing Education Pathway Program is open to employees of UVM Medical Center and other Network partner organizations in Vermont who are licensed RNs. Enrollees will continue their Network employment and receive an annual study stipend while working towards their MSN at Vermont State University or Norwich University. Graduates will work for at least two years as employees of UVM Medical Center (or another Network partner organization in Vermont), and as clinical nurse faculty at a Vermont college of nursing. This program will dramatically reduce Vermont’s shortage of clinical faculty and grow Vermont’s RN workforce.
- UVM Medical Center employees may enroll in a nine-month in-house Surgical Technician (ST) Pathway Program, which includes classroom instruction, hands-on lab work and clinical rotations. At the end of the program, students prepare for the NCCT exam to obtain certification.

Employee Housing and Childcare

The shortage of affordable housing and childcare in our community are significant obstacles to recruitment and retention of UVM Medical Center’s health care workforce. In response to this problem, UVM Medical Center partnered with a developer to build a 61-unit apartment building on Market Street in South Burlington, which opened for occupancy in Spring 2023.⁸ The apartments are available to employees of UVM Medical Center and other UVM Health Network partner organizations. A second 120-unit apartment building is under construction in South Burlington.⁹ These apartments will also be available to employees of UVM Medical Center and

⁸ See Jurisdictional Determination Letter, GMCB Dkt. No. GMCB-004-22con (February 24, 2022).

⁹ See Order Determining No Jurisdiction Asserted For Employee Housing Development, GMCB-009-22con (July 25, 2025).

other UVM Health Network partner organizations. The second building will include a childcare facility that will enroll up to seventy-five children (infants to Pre-K) with enrollment available first to the children of Network employees. The UVM Medical Center is currently exploring additional partnerships to expand affordable workforce housing for its employees.

b. Address UVMMC's plans regarding the impact of clinical staff salary inflation on OSC margins.

Response:

Several factors are impacting clinical staff salary inflation, including the need for high-cost travelers to provide temporary staffing during periods of high vacancy, external union pressures, and the need to compensate our employees competitively to ensure a high level of retention. Clinical staff salary expense makes up approximately forty percent (40%) of the OSC total operating expenses and is the largest single direct expense for the center.

UVM Medical Center plans to continue growing nursing and allied sciences educational pipelines and investing in recruitment activities to reduce its reliance on travelers, while responsibly balancing the need for wage growth containment to support the OSC's financial viability with the need to recruit and retain high quality health care providers. Additional details on recruitment activities are provided in response to Q.11(a).

c. Explain whether UVMMC has conducted any analysis to determine the maximum percent increase in staff costs that can be tolerated before it negatively affects the project's viability, especially the timetable for and the dollar amount of the projected profit margins.

Response:

Each one percent (1%) increase in staff (defined as direct and indirect staff as well as providers) salary expense will reduce the proposed OSC's total margin by approximate \$240,000 annually, based on costs and revenues in the full first year of operation, assuming other costs and revenues are static. We note, however, that staff salary inflation would probably occur in concert with inflationary pressure on other project costs as well. Multiple factors in addition to project costs will bear on the project's general viability. UVM Medical Center is confident in its ability to responsibly manage the project, including with respect to wage growth, to support its successful intended operation as described in the CON Application.

12. Specify the number of staff and expense associated with: (a) the existing staff that will be transferred from the main campus and Fanny Allen; and (b) the projected 25% of the RNs and 10% of the Techs to be employed at the OSC that will be Travelers for each year 2025-2029 of the project.

Response:

UVM Medical Center anticipates that approximately 49.7 non-provider FTEs will transfer to the Outpatient Surgery Center from other UVM Medical Center sites of service. This staff costs approximately \$5.52M in annual salaries and benefits.

For operating years 1-4, approximately 8.6 RN Traveler FTEs and 2.19 Tech Traveler FTEs will be needed to fully staff the OSC at an annual cost of \$2.1M and \$391K for these two groups respectively. For year 5, once two additional ORs are online, an additional 1.3 RN Traveler FTEs, and .75 Tech Traveler FTEs will be needed to fully staff the OSC at an annual cost of \$305K and \$134K for these two groups respectively. These expense estimates have not been adjusted for inflation.

- 13. UVMHC represents that approximately half of the positions required at the OSC will be relocated from Fanny Allen and UVMHC's existing ORs. Identify the number of new staff to be recruited to refill positions and associated costs to maintain the existing ORs located on UVMHC's main campus.**

Response:

UVM Medical Center's staffing analysis for the proposed project determined the incremental FTEs the organization will need to provide patient care at all sites of service collectively after the OSC opens. Those incremental FTEs are reported in the CON Application (pp. 24-26). UVM Medical Center has fully accounted for all incremental FTEs in the CON Application.

This staffing analysis does not differentiate between individual sites of service. UVM Medical Center does anticipate that some staff who currently work in Main Campus ORs will prefer to work at the OSC instead after it opens. In this event, some of the incremental FTEs reported in the CON Application will be assigned to the Main Campus ORs. UVM Medical Center has not, however, attempted to predict exactly how many incremental FTEs will work in the Main Campus ORs, and therefore cannot provide the cost for this subset of the incremental FTEs.

- 14. Provide the number of surgeons that will practice at both the OSC and Main Campus, the number of surgeons who will practice at the OSC only and the number of surgeons who will practice on Main Campus only. In a table format, list each provider type required for outpatient and inpatient surgeries, current FTEs for each provider type, projected FTEs for each provider type needed once the OSC is online, and the difference (number of new hires and FTEs for each provider type).**

Response:

The OSC will function as an integral part of the collective UVM Medical Center perioperative environment to maximize access for our patients. Patients will receive care in the most clinically appropriate environment.

UVM Medical Center currently employs 107 (81.4 FTEs) physicians who perform surgeries and invasive procedures ("Proceduralists"). After the OSC opens, none of these Proceduralists will operate exclusively at the OSC; 77 Proceduralists will operate at both the OSC and UVM Medical Center's Main Campus; and 30 Proceduralists will operate exclusively at the Main Campus.

Please see UVM Medical Center's CON Application, Figure 1.18 for a list of the provider types needed at the OSC, and the incremental FTEs needed to staff the OSC.

- 15. Explain in detail the statement in the Application that UVMHC will be “expanding its relationship with the UVM College of Nursing and Health Sciences,” and explain in detail how this relationship will result in staffing for the OSC. Application at p. 2, 26.**

Response:

Under an updated Affiliation Agreement between UVM Medical Center, The University of Vermont Health Network Medical Group, Inc., The University of Vermont Health Network Inc. (“UVM Health Network”), and University of Vermont and State Agricultural College (“UVM”) effective September 1, 2022, UVMHC and UVM Medical Center expand their commitment to support the clinical education of UVM College of Nursing and Health Sciences students by granting UVM priority for clinical placements at UVM Medical Center and other UVMHC partner organizations, which ultimately supports UVM Medical Center’s workforce development. The Affiliation Agreement provides in relevant part:

UVMHC and UVMHC, individually and collectively, agree to provide adequate primary sites, with associated facilities and support, for the clinical education of CNHS students so as to enable UVM to maintain high-quality, accredited clinical education programs. UVM agrees to designate UVMHC as the primary site for such programs. CNHS shall have a right of first refusal as to clinical placement opportunities at UVMHC and UVMHC Affiliates, for undergraduate and graduate students enrolled in CNHS programs, unless the UVMHC Affiliate has existing conflicting obligations, in which case the parties will collaborate to find alternative means to meet the training needs of the CNHS students and the workforce training needs of UVMHC. The parties shall establish a task force, led by the CNHS Dean, or designee, and the UVMHC Chief Nursing Officer, or designee, to implement the terms of this subsection.

In addition, as explained in response to the above Q.11(a), a Vermont Agency of Health Services grant-funded Master of Science in Nursing (MSN) Nursing Education Pathway Program is open to employees of UVM Medical Center and other Network partner organizations in Vermont who are licensed RNs. Enrollees will continue their Network employment and receive an annual study stipend while working towards their MSN at Vermont State University or Norwich University. Graduates will work for at least two years as employees of UVM Medical Center (or another Network partner organization in Vermont), and as clinical nurse faculty at a Vermont college of nursing, possibly including UVM’s College of Nursing and Health Sciences. This program will dramatically reduce Vermont’s shortage of clinical faculty and grow Vermont’s RN workforce.

- 16. UVMHC represents that Dr. Jackie Hunter, Senior VP for Diversity, Equity and Inclusion (DEI), served as an advisor to the OSC project planning team. Provide Dr. Hunter’s assessment and recommendations to the project planning team and design advisory group and explain what actions were taken to ensure that DEI principles will be implemented. Additionally, explain whether employees at the OSC will be required to complete any type of DEI training.**

Response:

Dr. Hunter, as a member of the Network’s senior leadership team, helped lead UVM Medical Center’s OSC Steering Committee and actively participated in Design Advisory Group meetings.

She did not make written recommendations. In her leadership role, Dr. Hunter facilitated group discussions with staff and providers about options for accessible staff changing, locker, shower, and toilet rooms at the OSC, and contributed her own knowledge and perspective to those discussions to ensure that the project will incorporate UVM Medical Center's DEI values and policies into the building's design.

The OSC floor plan includes gender-neutral bathrooms throughout the facility and lactation rooms for both patients/visitors and staff. Features of the OSC that protect patient privacy also support our commitment to DEI. Some examples of these features are patient pre-op and recovery rooms that are separated by walls, not curtains; 23-hour observation rooms with adjacent bathrooms; and separate entry and exit doors so that patients do not have to travel past a busy waiting area when they leave the facility upon discharge.

UVM Medical Center employees who work at the OSC will be subject to UVM Medical Center's generally applicable DEI training requirements. UVM Medical Center currently requires all its employees to complete an educational module on DEI annually. UVM Medical Center leadership (supervisors and above) are required to take an additional course called Everyday Inclusion, and other employees are encouraged to take this course as well.

Other

- 17. Newly enhanced public transportation is referenced in the application. However, with prep time that can begin as early as 6:00 am and the first surgery at 7:00 am, and with transportation service that does not begin until 7:30 am and effectively ceases operating at 3:10 pm, explain how the hours for public transportation services provide adequate access to patients who must rely on public transportation.**

Response:

Public transportation services are limited in UVM Medical Center's service area. Current Green Mountain Transit bus service from the Cherry Street Terminal in downtown Burlington, for example, begins at 6:00 am on weekdays and is not available to any location in the earlier morning hours. UVM Medical Center therefore routinely asks about and addresses the patient's transportation needs as part of its standard surgical scheduling process.

UVM Medical Center will follow its standard process to schedule patients at the OSC. This process starts with an initial patient screening conducted by a UVM Medical Center representative, which helps the UVM Medical Center scheduling team understand several factors that support a successful surgery experience and recovery. One of these factors is the patient's challenges or requirements with respect to transportation to or from the location where the surgery would be scheduled. Patients who need to use public transport to arrive for surgery can often be accommodated with an arrival time that aligns with the public transportation schedule. It is recommended that a family member, friend, or neighbor be present at the time of discharge and to accompany the patient home. If alignment with the public transportation schedule is not possible for a patient with no other transportation options, the scheduling team engages with UVM Medical Center's Case Management department to arrange transportation (often by taxi or Uber) at UVM Medical Center's expense.

18. Provide a copy of the financial assistance policy that will be used at the new OSC.

Response:

A copy of this policy is attached hereto as Exhibit C.

19. Explain in detail whether UVM Medical Center explored options for an outpatient surgery center with fewer than eight or twelve ORs and identify the costs associated with other options explored.

Response:

Continued use of Fanny Allen Campus ORs

As UVM Medical Center explained in its CON Application, the project is intended in part to replace five operating rooms (“ORs”) used for outpatient procedures at UVM Medical Center’s Fanny Allen Campus, which have been identified for full replacement in UVM Medical Center’s Facilities Master Plan since 2017. The proposed OSC adds three additional ORs to the five replacement ORs (as well as shell space for four more ORs) in order to meet projected demand.

We did not seriously consider options that contained fewer ORs that we project will be necessary to meet patient demand. Building a facility that is not designed to meet the needs of our patients would have resulted in a higher cost per-OR in the short term, and a higher cost of constructing the additional necessary ORs in the future (as detailed below). Building eight ORs and shelling four additional ORs was identified as the most financially responsible way to meet projected future demand.

It was determined that renovating the Fanny Allen Campus ORs in lieu of closing them is not feasible. The ORs are significantly undersized by current FGI standards—ranging in size from 378 to 450 GSF. They cannot accommodate the installation of air handling systems to meet current code requirements, and they cannot accommodate contemporary surgical and interoperative imaging equipment. The Fanny Allen’s preoperative and postoperative spaces are insufficient to support the number of ORs. In addition, the bays are small, narrow, and shallow, leaving limited space for staff to access the patient and for families to visit at the patient’s bedside. The small size of the bays (i.e. the spaces in which patients are prepared for and recover from surgery) and close proximity of the bays to each other limit patient privacy. It would be similarly impractical to attempt to expand the number of ORs within the building that currently houses the existing five ORs on the Fanny Allen campus.

Excluding Proposed Shell Space for Four ORs from Project Design

UVM Medical Center considered savings it might realize in the near term by excluding the proposed shell space from the project design. It was determined that the initial cost savings are small relative to the total project cost, and adding the necessary space after the building is occupied would both cost significantly more and disrupt OSC operations.

The proposed building design includes three shell spaces to be left unfinished initially and fit up when additional prep, recovery, and operating rooms are needed to meet demand for outpatient

surgical services. *See* CON Application at 15, Figure 1.10 (2019 to 2035 OR Demand and Supply based on three growth scenarios with proposed OSC ORs overlay). Two of the proposed shell space areas are “slab on grade” and adjoin the prep and recovery areas respectively. The third proposed shell space would be the location for four future operating rooms located on the ground floor above a finished basement area containing mechanical equipment serving the building.

The cost for the three shell spaces is included in UVM Medical Center’s construction cost estimate prepared in 2022 at a value of \$3,533,800. However, the net savings UVM Medical Center could realize by excluding the shell space from the project is considerably less because the shell space is integrated into the proposed building’s infrastructure, and it would be necessary to redesign mechanical and electrical systems and modify the building’s exterior façade if it were excluded. If UVM Medical Center does not build the operating room shell space, a new roof area would be needed to cover building space that cannot be removed on the floor below.

These changes would require City of South Burlington and Act 250 permit amendments. South Burlington may require an extensive permit review as the building’s exterior elements and overall site presentation were the subject of rigorous review and design input from the South Burlington Development Review Board and Planning and Zoning staff during the permitting process.

If UVM Medical Center were to postpone building the shell space, we estimate that constructing the same shell space when additional prep, recovery, and operating rooms are needed later would cost up to twice as much. Costs would be higher in part due to anticipated inflation in the costs of materials and labor. In addition, costs would be higher because construction next to and above occupied space would be more complicated and take longer. It would be necessary to demolish the portions of the building’s roofing and exterior façade where the shell spaces would connect, build temporary separation walls, install equipment necessary to maintain the construction site in negative pressure, and regrade the area once the shell spaces are complete.

Further, the construction of the shell space at a future date will impact building operations, disrupt patient care, and impact the surgery schedule, reducing case volume and revenue.

* * *

Thank you for your attention to UVM Medical Center's application. Please let us know if you have any further questions or need additional information.

Sincerely,

A handwritten signature in blue ink, appearing to read "Eric Miller". The signature is fluid and cursive, with the first name "Eric" and last name "Miller" clearly distinguishable.

Eric Miller
General Counsel & SVP
The University of Vermont Health Network



Surgical Services Throughput Benchmarking Study Knowledge Transfer Webinar

[Click here for the recording](#)

Marilyn Sherrill, RN, MBA
Senior PI Program Director
October 26, 2022

vizient.[®]

Vizient benchmarking study leaders



Project Leader

Marilyn Sherrill

Senior Program Director, PI Collaboratives



Support Lead

Violet Velez

Program Manager, PI Collaboratives



Data Lead

Beatrice Gaturu

Data Applications and Insights Director



Vizient subject matter experts



Jay Prystowsky, MD, MBA
Principal
Operations and Quality



Rosanne Zagone, RN, MSN
Associate Principal
Advisory Services



Benchmarking study participants (34 orgs. *)

Altru Health System

Baptist Health

Beth Israel Deaconess Medical Center

Cayuga Medical Center at Ithaca

Cedars-Sinai Health System

CentraCare

CoxHealth

Dartmouth-Hitchcock Clinic

FHN Memorial Hospital

Great River Health

Gunderson Health System

Gunnison Valley Hospital

Huntington Hospital

IU Blooming Regional Academic Health Center

Lake Region Healthcare

Nebraska Methodist Hospital

Nebraska Methodist Women's Hospital

OU Health

Saint Francis Medical Center

Southeast Iowa Regional Medical Center – West Burlington Campus

Sparrow Health System

St. Joseph Medical Center

The Johns Hopkins Hospital

Trinity Health

UC Davis Medical Center

UF Health Shands Hospital

UMMC Midtown Campus

Unity Health – White County Medical Center

University Hospital

University of Iowa Hospitals and Clinics

University of Kentucky Albert B. Chandler Hospital

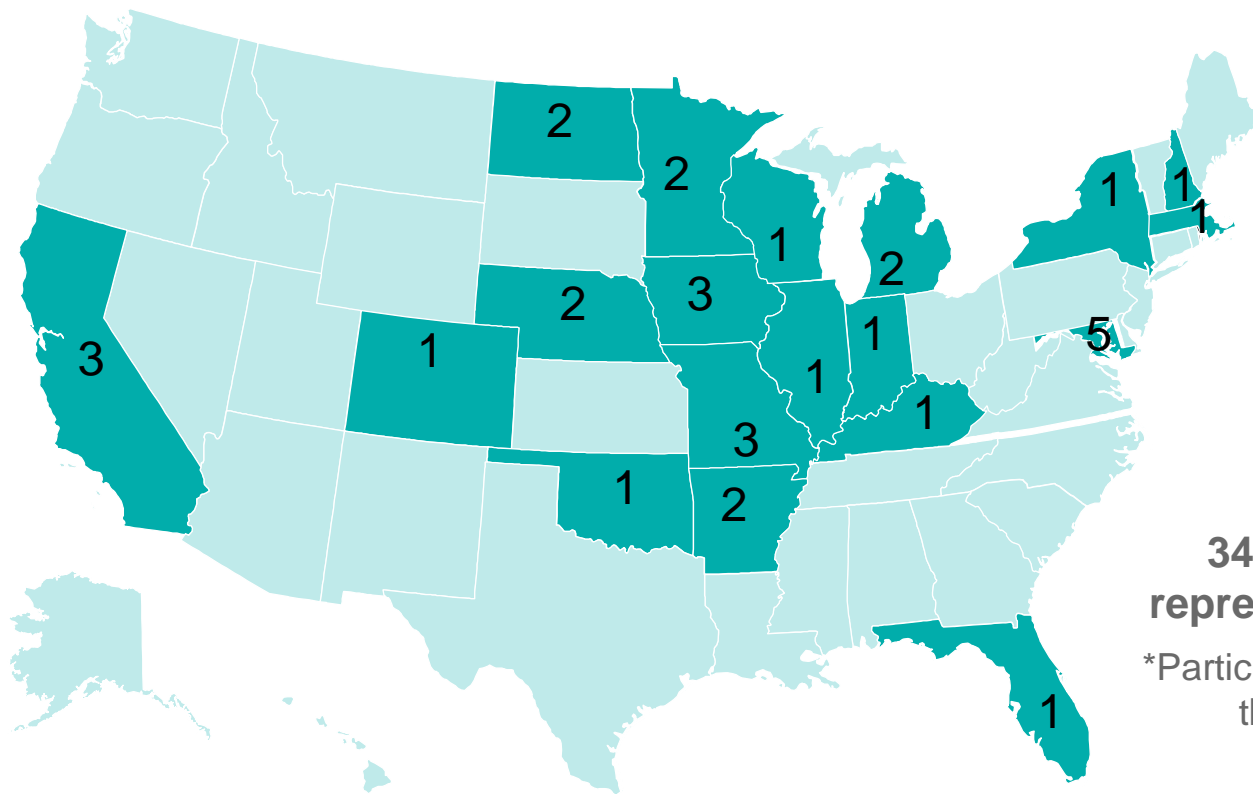
University of Maryland Medical Center

University of Michigan Hospitals and Health Centers

Upper Chesapeake Medical Center

* Total number of surgical departments in study = 59

Benchmarking study participants by state



**34 organizations
representing 19 states**

*Participants are denoted by
the darker green

Vizient members have an opportunity to develop surgical benchmarking to assist in addressing the challenges they are facing.

Deferred surgeries, preventive care, rising acuity, a maturing IP-to-OP shift and the persistent pressure of health inequality are impacting surgery volumes.



How can we do better? How do we compare to others?

Operating Room operational metrics are not publicly available. Hospital leadership and OR leadership wants to know how they are performing compared to others in terms of **current operational state and prioritizing areas for improvement**

There is no industry or governmental data repository of data.

Reports are anecdotal, isolated, and dated

There is no industry standard to define benchmark metrics.

Measurements are often ill-defined and measured in variable manner from one organization to the next

There are no industry standards for best practices for benchmark analyses.

Variations exist in policies, procedures, scheduling practices workforce management, costs, from one hospital to another

How do we measure and maintain improvement?

Develop standard measurements and data sources for benchmarking

This survey attempts to better understand the operational metrics and practices of participating



Qualitative research effort in the absence of publicly available information utilizing standard definitions



Members can gain a **better understanding** of how their practices and operational metrics compare to others



Results may aid members in understanding their greatest **opportunities for improvement.**

Data collection overview

Maximum number of questions – 89

Timeline of data includes **January – December 2021**

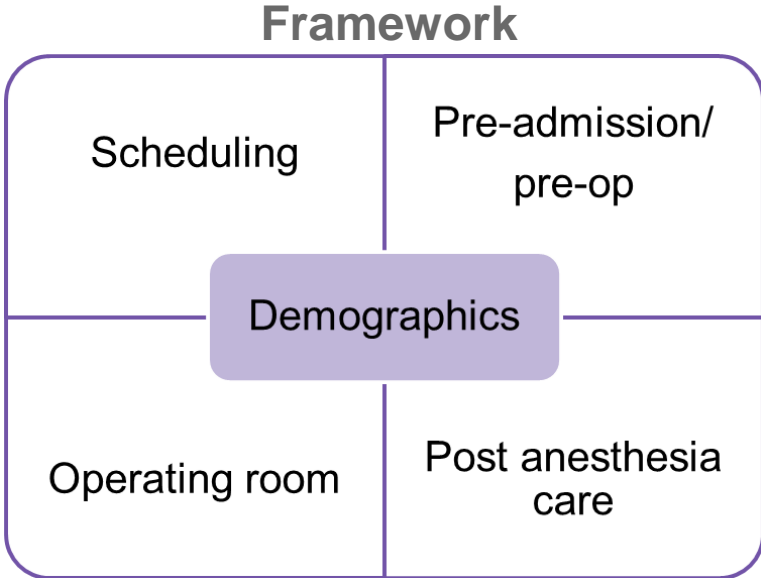
Additional outcome metric

Operational Data Base (ODB) – OR cost per minute

Survey submissions – 59

Cohorts

- 1. Ambulatory surgery centers
- 2. <10,000 annual case volumes (inpatients and outpatients)
- 3. ≥10,000 annual case volumes (inpatient and outpatients)



Results and insights



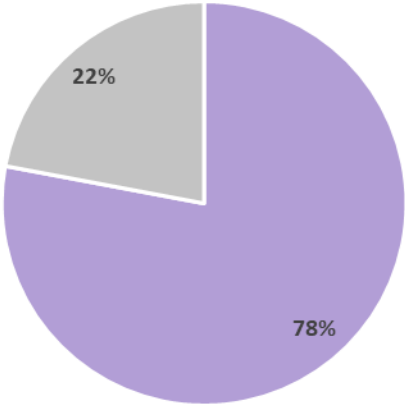
Demographics

Study cohorts

Participants	Count
Ambulatory Surgery Centers	19
< 10,000 annual case volumes (inpatients and outpatients)	17
= > 10,000 annual case volumes (inpatient and outpatients)	23
Grand Total	59

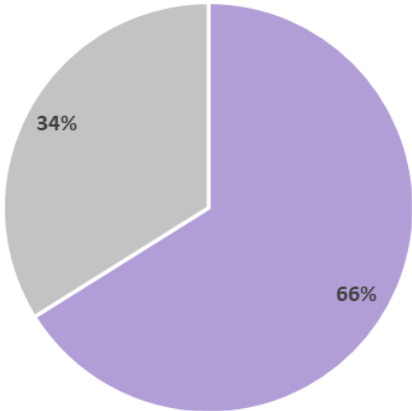
Demographics

Teaching Hospital



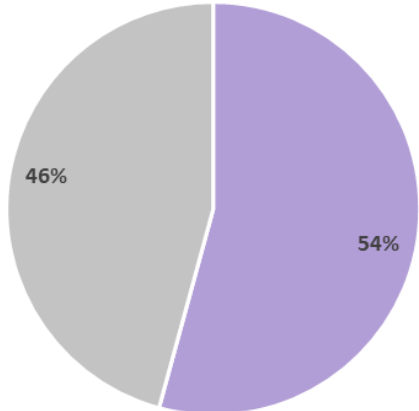
■ Yes (n=46) ■ No (n=13)

Surgical Residency Program



■ Yes (n=39) ■ No (n=20)

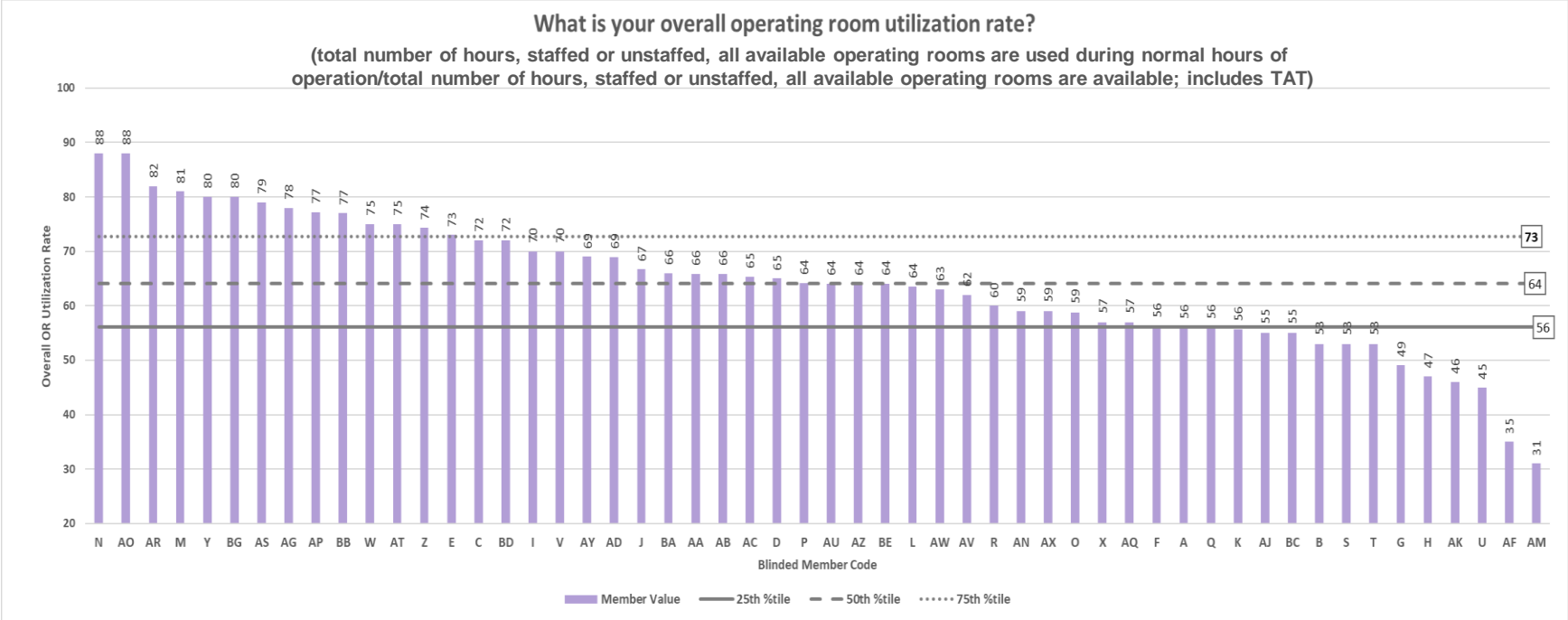
Anesthesia Residency Program



■ Yes (n=32) ■ No (n=27)

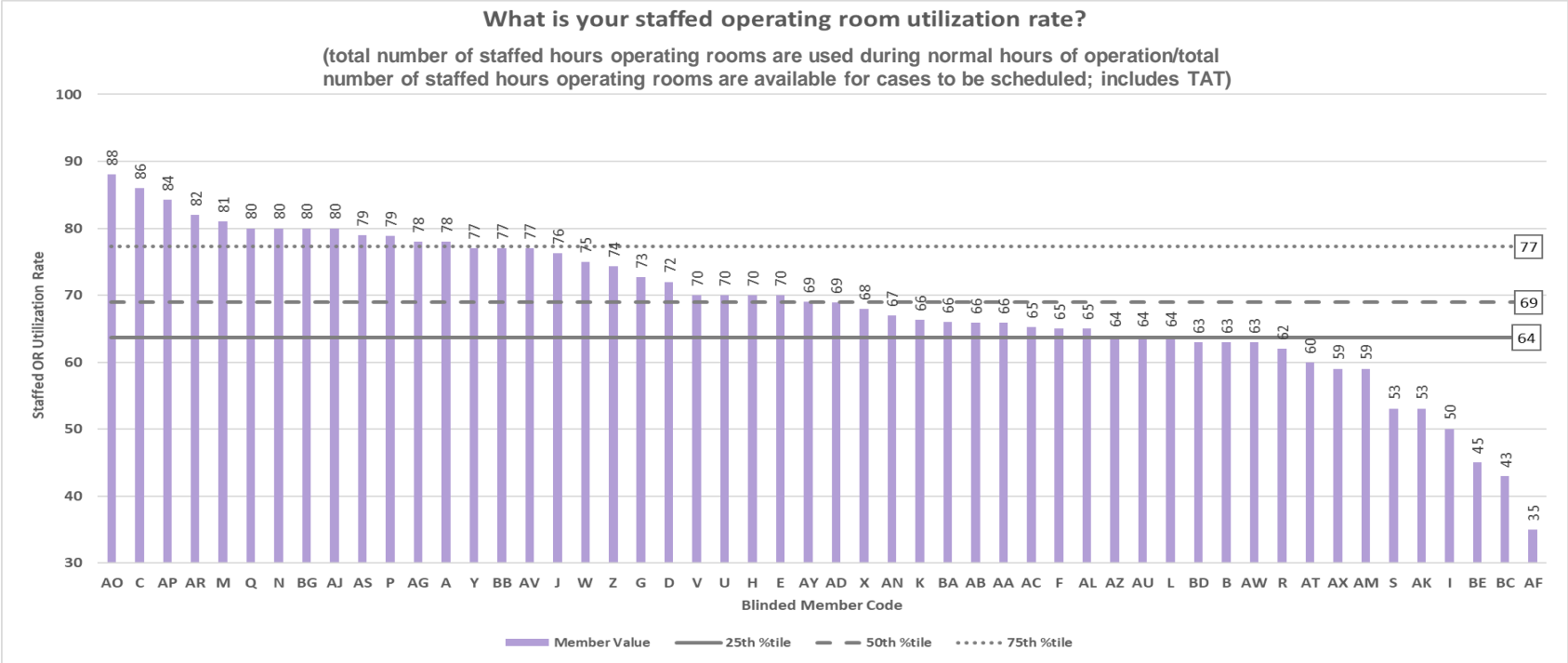
Choose your trauma designation.	
I	33
II	8
III	5
IV	1
None	12
	59

Scheduling – overall operating room utilization



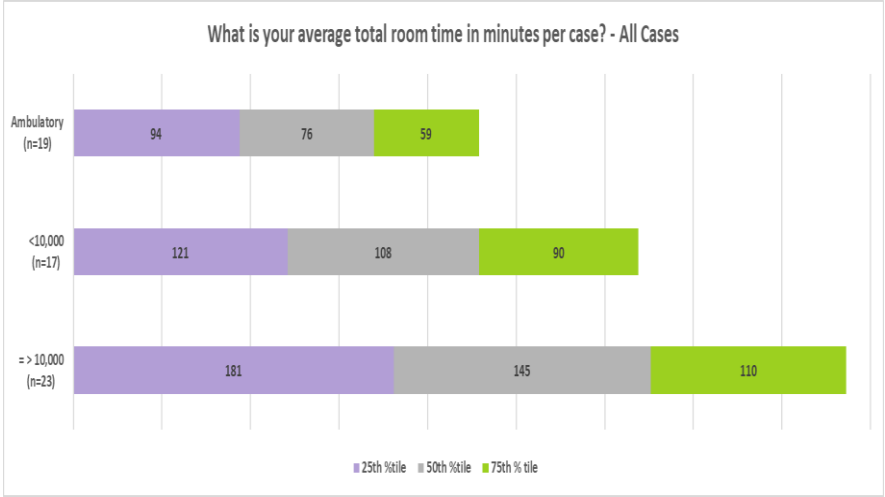
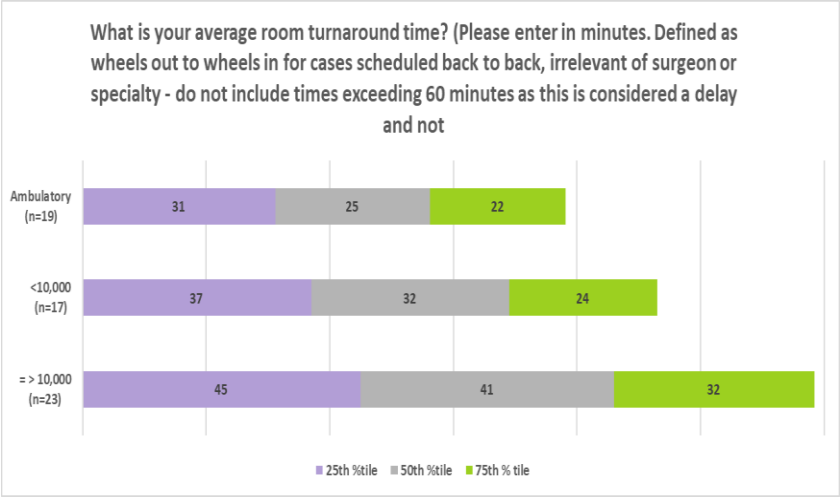
N=54

Scheduling – **staffed** operating room utilization



N=52

Operating room – throughput all cases



Let's work together

vizient[®]

picollaboratives@vizientinc.com

This information is proprietary and highly confidential. Any unauthorized dissemination, distribution or copying is strictly prohibited. Any violation of this prohibition may be subject to penalties and recourse under the law. Copyright 2023 Vizient, Inc. All rights reserved.

Exhibit B

UVMCC Outpatient Surgery Center Equipment List. Rev. 10.03.2023

Equip. Total	\$	16,290,516
Contingency	\$	1,629,052
TOTAL	\$	17,919,568

Clinical	Area	Venor	Description	Category	Condition	Qty	Unit Price	Extended
Nursing	Alcove, Prep	Welch Allyn Scale - tronix portable Model 5002-XX-X	Scale, Floor, Stationary	Medical Equipment	New	1	\$ 5,000	\$ 5,000
Nursing	Alcove, Prep	Detecto USA-Made Fold-Up CME 7550	Scale, Floor, Bariatric/Wheelchair, Fold-Up	Medical Equipment	New	1	\$ 5,000	\$ 5,000
Nursing	Alcove, Recovery Phase 1		Wheelchair	Medical Equipment	New	14	\$ 1,600	\$ 22,400
Nursing	Alcove, Recovery Phase 1	CME CESS-A-MWSM4110-R	Adult Code Cart w/Defib/LifePak	Medical Equipment	New	1	\$ 16,000	\$ 16,000
Nursing	Alcove, Recovery Phase 2		Wheelchair	Medical Equipment	New	14	\$ 1,600	\$ 22,400
Nursing	Alcove, Recovery Phase 2	NMA2000	Maxi Once Holder	Medical Equipment	New	3	\$ 400	\$ 1,200
Nursing	Alcove, Recovery Phase 2	KMCEUN-D	Maxi Move w/Scale, Ultra-Low-Castors, Medium Pow	Medical Equipment	New	2	\$ 8,300	\$ 16,600
Nursing	Alcove, Recovery Phase 2	MAS00001-US	Maxi Air Supply	Medical Equipment	New	4	\$ 1,000	\$ 4,000
Nursing	Alcove, Recovery Phase 2	MCA0003	Maxi Air Cart	Medical Equipment	New	4	\$ 400	\$ 1,600
Nursing	Alcove, Recovery Phase 2	Scotsman UF424-A-1#B 440 lb self contained flaker	Ice Machine, Flaker	Facilities	New	1	\$ 9,000	\$ 9,000
Nursing	Alcove, Recovery Phase 2	CME CESS-A-MWSM4110-R	Adult Code Cart w/Defib/LifePak	Medical Equipment	New	1	\$ 16,000	\$ 16,000
All	All		Door, Keying	Facilities	New	1	\$ 5,000	\$ 5,000
Facilities	All		Temp and Pressure Monitoring	Facilities	New	1	\$ 38,000	\$ 38,000
All	All		Sound Masking/Overhead Page	Facilities	New	1	\$ 170,000	\$ 170,000
All	All		Signage, Exterior	Facilities	New	1	\$ 30,000	\$ 30,000
All	All		Shelving, Allowance	Facilities	New	1	\$ 10,000	\$ 10,000
IT	All		IT - Other	IT	New	1	\$ 1,073,910	\$ 1,073,910
CSR	All		CSR - Instrument Total	Instrumentation	New	1	\$ 1,922,945	\$ 1,922,945
Nursing	All		Comcast	Facilities	New	1	\$ 1,000	\$ 1,000
All	All	Ronco	Clocks, Sapling	Facilities	New	1	\$ 37,000	\$ 37,000
Nursing	All	BCA	Artwork	Artwork	New	50	\$ 1,200	\$ 60,000
Nursing	Care Station - Prep	Grainger - 5M875	Trash, Confidential	Environmental Service	New	3	\$ 200	\$ 600
Nursing	Care Station - Prep	Grainger - 4PGU8	Trash, 23 gallon	Environmental Service	New	3	\$ 80	\$ 240
Nursing	Care Station - Prep	Grainger - 4PGU9	Recycle, 23 Gallon	Environmental Service	New	3	\$ 70	\$ 210
Nursing	Care Station - Prep	Haworth	Modular Workstation	Furnishings/Equip	New	1	\$ 16,000	\$ 16,000
Nursing	Care Station - Prep		Glucometer, Licensing and support fees	Medical Equipment	New	1	\$ 6,800	\$ 6,800
Nursing	Care Station - Prep		Glucometer	Medical Equipment	New	1	\$ 1,000	\$ 1,000
Nursing	Care Station - Prep	Office Environments	File, Ped, Box, Box, File, Mobile	Furnishings/Equip	New	8	\$ 515	\$ 4,120
Nursing	Care Station - Prep	Haworth	Chairs, Task, w/o Arms	Furnishings/Equip	New	12	\$ 5,310	\$ 63,720
Nursing	Care Station - Prep	Haworth	Chairs, Task, w/Arms	Furnishings/Equip	New	2	\$ 731	\$ 1,462
Nursing	Care Station - Recover Phase 1	Grainger - 5M875	Trash, Confidential	Environmental Service	New	3	\$ 200	\$ 600
Nursing	Care Station - Recover Phase 1	Grainger - 4PGU8	Trash, 23 gallon	Environmental Service	New	3	\$ 80	\$ 240
Nursing	Care Station - Recover Phase 1	Grainger - 4PGU9	Recycle, 23 Gallon	Environmental Service	New	3	\$ 70	\$ 210
Nursing	Care Station - Recover Phase 1	Haworth	Modular Workstation	Furnishings/Equip	New	1	\$ 9,000	\$ 9,000
Nursing	Care Station - Recover Phase 1		Glucometer	Medical Equipment	New	1	\$ 1,000	\$ 1,000
Nursing	Care Station - Recover Phase 1	X Series	File, Ped, Box, Box, File, Mobile	Furnishings/Equip	New	11	\$ 515	\$ 5,665
Nursing	Care Station - Recover Phase 1	Haworth	Chairs, Task, w/o Arms	Furnishings/Equip	New	9	\$ 701	\$ 6,309
Nursing	Care Station - Recover Phase 1	Haworth	Chairs, Task, w/Arms	Furnishings/Equip	New	2	\$ 1,046	\$ 2,092
Nursing	Care Station - Recover Phase 2	Grainger - 5M875	Trash, Confidential	Environmental Service	New	3	\$ 200	\$ 600

Clinical	Area	Venor	Description	Category	Condition	Qty	Unit Price	Extended
Nursing	Care Station - Recover Phase 2	Grainger - 4PGU8	Trash, 23 gallon	Environmental Service	New	3	\$ 80	\$ 240
Nursing	Care Station - Recover Phase 2	Grainger - 4PGU9	Recycle, 23 Gallon	Environmental Service	New	3	\$ 70	\$ 210
Nursing	Care Station - Recover Phase 2	Haworth	Modular Workstation	Furnishings/Equip	New	1	\$ 16,000	\$ 16,000
Nursing	Care Station - Recover Phase 2		Glucometer	Medical Equipment	New	1	\$ 1,000	\$ 1,000
Nursing	Care Station - Recover Phase 2	Office Environments	File, Ped, Box, Box, File, Mobile	Furnishings/Equip	New	8	\$ 515	\$ 4,120
Nursing	Care Station - Recover Phase 2	Haworth	Chairs, Task, w/o Arms	Furnishings/Equip	New	17	\$ 701	\$ 11,917
Registration	Check-In, Registration	Grainger - 5M875	Trash, Confidential	Environmental Service	New	1	\$ 200	\$ 200
Registration	Check-In, Registration	Grainger - 4PGN7	Trash, 28-Quart	Environmental Service	New	3	\$ 15	\$ 45
Registration	Check-In, Registration	Grainger, 4UJU5 28 Quart Recycle	Recycle, 28-Quart	Environmental Service	New	3	\$ 15	\$ 45
Registration	Check-In, Registration	Office Environments	Modular Workstation, Full Height	Furnishings/Equip	New	1	\$ 26,000	\$ 26,000
Registration	Check-In, Registration	Office Environments	File, Ped, Box, Box, File, Mobile	Furnishings/Equip	New	3	\$ 515	\$ 1,545
Registration	Check-In, Registration	Office Environments	Chairs, Task, w/o Arms	Furnishings/Equip	New	3	\$ 679	\$ 2,037
Registration	Check-In, Registration	Stance	Chair, Guest, Patient	Furnishings/Equip	New	2	\$ 393	\$ 786
Registration	Check-In, Registration	Office Environments	Chair, Guest, Bariatric	Furnishings/Equip	New	1	\$ 651	\$ 651
CSR	Clean		Tables, Stainless, 6'x4', with shelving below	Furnishings/Equip	New	2	\$ 3,000	\$ 6,000
CSR	Clean		Shelving, High Density	Furnishings/Equip	New	1	\$ 100	\$ 100
CSR	Clean		Shelf, Stainless for Scanners	Furnishings/Equip	New	2	\$ 500	\$ 1,000
CSR	Clean		Metro Carts, w/locking wheels and heavy duty base, 6'	Furnishings/Equip	New	4	\$ 1,541	\$ 6,162
Nursing	Clean Core		Warmer, Fluid, Blood	Medical Equipment	New	1	\$ 4,000	\$ 4,000
Nursing	Clean Core		Shelving, Metro, W/Wheels, 2'x4'	Medical Equipment	New	10	\$ 700	\$ 7,000
Nursing	Clean Core	Follett REF5, Mediclick, 90137	Refrigerator, Needs Temptrack	Facilities	New	5	\$ 2,100	\$ 10,500
Nursing	Clean Core	Follett REF2, Mediclick, 90126	Refrigerator, Needs Temptrack	Facilities	New	2	\$ 1,600	\$ 3,200
Nursing	Clean Core	Follett REF5, Mediclick, 90137	Refrigerator, Needs Temptrack	Facilities	New	2	\$ 2,500	\$ 5,000
Nursing	Clean Core	Follett REF2, Mediclick, 90126	Refrigerator, Needs Temptrack	Facilities	New	2	\$ 2,000	\$ 4,000
Nursing	Clean Core	Pamero Health - WH290 - 109	Holder, Oxiver	Environmental Service	New	2	\$ 34	\$ 68
Nursing	Clean Core		Hand Sanitizer Guard	Environmental Service	New	16	\$ 15	\$ 240
Nursing	Clean Core		Freezer, Small	Facilities	New	1	\$ 2,500	\$ 2,500
Nursing	Clean Core	Haworth, Improv	Chair, Task, Stool, w/o Arms	Furnishings/Equip	New	5	\$ 1,079	\$ 5,395
Nursing	Clean Core		Cart, Isolation	Medical Equipment	New	1	\$ 2,000	\$ 2,000
Nursing	Clean Core		Cart, Adult Code	Medical Equipment	New	1	\$ 16,000	\$ 16,000
Nursing	Clean Core		Cabinet, Warming, W/Glass Doors, Freestanding	Medical Equipment	New	1	\$ 4,000	\$ 4,000
Nursing	Clean Core		Blanket Warmer, w/temptrak	Medical Equipment	New	1	\$ 4,000	\$ 4,000
Distribution	Clean Linen	Duracast, 402048FAHC, LM	Laundry Truck, 45 Cu Ft.	Distribution	New	4	\$ 2,000	\$ 8,000
CSR	Clean Storage		Chair, Task, Stools	Furnishings/Equip	New	3	\$ 1,079	\$ 3,237
CSR	Clean Storage		Case Carts - 35 carts	Furnishings/Equip	New	1	\$ 109,266	\$ 109,266
Nursing	Clean, Mat Room		Mat, Anti-Fatigue	Medical Equipment	New	8	\$ 125	\$ 1,000
Nursing	Conference Room, Admin	Grainger - 4PGU8	Trash, 23 gallon	Environmental Service	New	1	\$ 80	\$ 80
Physician	Conference Room, Admin	Office Environments	Table, Round, 36"	Furnishings/Equip	New	1	\$ 300	\$ 300
Nursing	Conference Room, Admin	Grainger - 4PGU9	Recycle, 23 Gallon	Environmental Service	New	2	\$ 70	\$ 140
Nursing	Conference Room, Admin	Vermont Plastic	Hand Sanitizer Guard	Environmental Service	New	2	\$ 15	\$ 30
Physician	Conference Room, Admin	Haworth	Chair, Side, Staff	Furnishings/Equip	New	2	\$ 200	\$ 400
Physician	Conference Room, Admin	WB Mason	Board, White 4'x3'	Furnishings/Equip	New	1	\$ 300	\$ 300
Nursing	Conference Room, Ground	Grainger - 4PGU8	Trash, 23 gallon	Environmental Service	New	1	\$ 80	\$ 80
Nursing	Conference Room, Ground	Jive	Table, 24"x72" w/casters w/flip top	Furnishings/Equip	New	20	\$ 858	\$ 17,160

Clinical	Area	Venor	Description	Category	Condition	Qty	Unit Price	Extended
Nursing	Conference Room, Ground	Grainger - 4PGU9	Recycle, 23 Gallon	Environmental Service	New	2	\$ 70	\$ 140
Nursing	Conference Room, Ground	Vermont Plastic	Hand Sanitizer Guard	Environmental Service	New	2	\$ 15	\$ 30
Nursing	Conference Room, Ground	X99	Chair, conference hard casters, armless	Furnishings/Equip	New	40	\$ 582	\$ 23,280
Nursing	Conference Room, Ground	WB Mason	Board, White 4'x6'	Furnishings/Equip	New	2	\$ 700	\$ 1,400
Nursing	Consult		Stool, Exam	Furnishings/Equip	New	3	\$ 195	\$ 585
Nursing	Consult	Haworth	Desk, 24"x36"	Furnishings/Equip	New	3	\$ 989	\$ 2,967
Nursing	Consult	Koncert	Chair, Guest, Patient	Furnishings/Equip	New	5	\$ 393	\$ 1,965
Nursing	Consult	Koncert	Chair, Guest, Bariatric	Furnishings/Equip	New	1	\$ 651	\$ 651
Nursing	Control Center	Office Environments	Modular Workstation	Furnishings/Equip	New	1	\$ 16,500	\$ 16,500
Nursing	Control Center	Office Environments	File, Ped, Box, Box, File, Mobile	Furnishings/Equip	New	3	\$ 515	\$ 1,545
Nursing	Control Center	Office Environments	File Cabinet, Lateral 4 drawer	Furnishings/Equip	New	2	\$ 1,094	\$ 2,188
Nursing	Control Center	Office Environments	Chairs, Task, w/o Arms	Furnishings/Equip	New	3	\$ 701	\$ 2,103
All	Corridor		Wayfinding, Interior	Facilities	New	1	\$ 20,000	\$ 20,000
Nursing	Corridor		Signage, corridor typical	Facilities	New	44	\$ 30	\$ 1,320
Nursing	Corridor		Sign above Fire Extinguisher	Facilities	New	12	\$ 20	\$ 240
Facilities	Corridor	Grainger	Mirror, Full Dome	Facilities	New	30	\$ 100	\$ 3,000
Facilities	Corridor	McMaster-Carr, #52475T54	Mirror, 180 Degree Half Dome, 18"	Facilities	New	10	\$ 40	\$ 400
Nursing	Corridor	Pamero Health - WH290 - 109	Holder, Oxiver	Environmental Service	New	6	\$ 34	\$ 204
Nursing	Corridor	Vermont Plastic	Hand Sanitizer Guard	Environmental Service	New	56	\$ 15	\$ 840
Nursing	Corridor		Evacuation Placards/ Signs	Facilities	New	12	\$ 50	\$ 600
Nursing	Corridor		Backboard	Medical Equipment	New	1	\$ 200	\$ 200
Facilities	Corridor	Includes all connecting corridors	5 lb ABC Fire Extinguishers	Facilities	New	12	\$ 90	\$ 1,080
Nursing	Corridor, OR	Impact Fire, 2.5 Gal Water Mist	Fire Extinguisher, Water	Facilities	New	8	\$ 250	\$ 2,000
Nursing	Corridor, Prep	Pamero Health - WH290 - 109	Holder, Oxiver	Environmental Service	New	2	\$ 34	\$ 68
Nursing	Corridor, Prep		Hand Sanitizer Guard	Environmental Service	New	10	\$ 15	\$ 150
Nursing	Corridor, Prep	Haworth, Improv	Chair, Task, Stool, w/o Arms	Furnishings/Equip	New	5	\$ 725	\$ 3,625
CSR	Decontamination		Metro Carts, w/locking wheels and heavy duty base, 6	Furnishings/Equip	New	4	\$ 1,600	\$ 6,400
CSR	Decontamination		Mats, Table	Furnishings/Equip	New	15	\$ 125	\$ 1,875
CSR	Decontamination		Magnifying Lights	Furnishings/Equip	New	9	\$ 125	\$ 1,125
CSR	Decontamination		Insulation Checker	Furnishings/Equip	New	3	\$ 1,700	\$ 5,100
Nursing	Decontamination	Pamero Health - WH290 - 109	Holder, Oxiver	Environmental Service	New	2	\$ 34	\$ 68
CSR	Decontamination		Dispenser, Tape	Furnishings/Equip	New	20	\$ 10	\$ 200
CSR	Decontamination		Demagnetize	Furnishings/Equip	New	9	\$ 400	\$ 3,600
Nursing	Equipment Storage Room, OR, ENT	Medtronic console on IV Pole	Straight Shot - Laryngoscopies (console \$25k and hand	Medical Equipment	New	1	\$ 70,000	\$ 70,000
Nursing	Equipment Storage Room, OR, ENT	Micro Image Tech	Ronin Headlights general, cordless	Medical Equipment	New	5	\$ 4,999	\$ 24,995
Nursing	Equipment Storage Room, OR, ENT	?	NIM; Intra-op PTH (Lab) - Parathyroidectomy	Medical Equipment	New	1	\$ 45,000	\$ 45,000
Nursing	Equipment Storage Room, OR, ENT	Cole Palmer	Nasal Splint Warmer (tooth guard) - Laryngoscopes	Medical Equipment	New	1	\$ 447	\$ 447
Nursing	Equipment Storage Room, OR, ENT	Karl Zeiss	Microscope adaptor	Medical Equipment	New	1	\$ 15,000	\$ 15,000
Nursing	Equipment Storage Room, OR, ENT	Zeiss	Microscope #8/#14 - Laryngoscopies ** negative pres	Medical Equipment	New	1	\$ 150,000	\$ 150,000
Nursing	Equipment Storage Room, OR, ENT	Lumenis	Micromanipulator for fixed are laser -	Medical Equipment	New	1	\$ 15,000	\$ 15,000
Nursing	Equipment Storage Room, OR, ENT	Teleflex	Mayo Tray	Medical Equipment	New	1	\$ 5,460	\$ 5,460
Nursing	Equipment Storage Room, OR, ENT	Karl Storz	Light Source, Laryngoscopy Cart	Medical Equipment	New	1	\$ 14,000	\$ 14,000
Nursing	Equipment Storage Room, OR, ENT	Karl Storz	Laryngoscopy Cart - Laryngoscopies	Medical Equipment	New	1	\$ 1,200	\$ 1,200
Nursing	Equipment Storage Room, OR, ENT	Teleflex	Laryngoscope Holder	Medical Equipment	New	1	\$ 2,664	\$ 2,664

Clinical	Area	Venor	Description	Category	Condition	Qty	Unit Price	Extended
Nursing	Equipment Storage Room, OR, ENT	Abott	ISTAT - Parathyroidectomy	Medical Equipment	New	1	\$ 10,000	\$ 10,000
Nursing	Equipment Storage Room, OR, ENT	Pamero Health - WH290 - 109	Holder, Oxiver	Environmental Service	New	2	\$ 34	\$ 68
Nursing	Equipment Storage Room, OR, ENT	Lumenis	Fixed arm CO2 laser with digital scanner attachment	Medical Equipment	New	1	\$ 140,000	\$ 140,000
Nursing	Equipment Storage Room, OR, ENT	Zeiss	Crain Chair - Laryngoscopies	Medical Equipment	New	1	\$ 80,000	\$ 80,000
Nursing	Equipment Storage Room, OR, ENT	Cochlear	BAHA Oscora Drill Console, with drill	Medical Equipment	New	1	\$ 12,000	\$ 12,000
Nursing	Equipment Storage Room, OR, ENT	Depuy Synthes	Anspach Emax Drill, with pedal	Medical Equipment	New	1	\$ 35,000	\$ 35,000
Nursing	Equipment Storage Room, OR, Eyes, Anterior	Karl Zeiss	Microscope - Cataract	Medical Equipment	New	1	\$ 135,000	\$ 135,000
Nursing	Equipment Storage Room, OR, Eyes, Posterior	Keeler	Cyro machine (nitrous needed)	Medical Equipment	New	1	\$ 25,000	\$ 25,000
Nursing	Equipment Storage Room, OR, FESS	Brainlab	BrainLAB Navigation System Curve system	Medical Equipment	New	1	\$ 305,000	\$ 305,000
Nursing	Equipment Storage Room, OR, Foot & Ankle	Skytron	Radiolucent extensions	Medical Equipment	New	2	\$ 4,700	\$ 9,400
Nursing	Equipment Storage Room, OR, Foot & Ankle	?	Foot Positioner	Medical Equipment	New	2	\$ 1,500	\$ 3,000
Nursing	Equipment Storage Room, OR, Gen Surg	Skytron	Split Legs - short	Medical Equipment	New	1	\$ 4,200	\$ 4,200
Nursing	Equipment Storage Room, OR, Gen Surg	Steris	Split Legs - Long-each not a set per costumor service	Medical Equipment	New	2	\$ 4,620	\$ 9,240
Nursing	Equipment Storage Room, OR, Gen Surg	Karl Storz	Point Setter ***colonoscopy EDG set-up CSR implicat	Medical Equipment	New	1	\$ 63,000	\$ 63,000
Nursing	Equipment Storage Room, OR, Gen Surg	Stryker	Pin Point Tower (1 needed if ICG is not purchased)	Medical Equipment	New	1	\$ 145,000	\$ 145,000
Nursing	Equipment Storage Room, OR, Gen Surg	Infab	Lead Wall	Medical Equipment	New	4	\$ 4,759	\$ 19,036
Nursing	Equipment Storage Room, OR, Gen Surg	Mizuho	Jackson Flat Top 5803	Medical Equipment	New	1	\$ 80,000	\$ 80,000
Nursing	Equipment Storage Room, OR, Gen Surg	Alimed	Foot board	Medical Equipment	New	3	\$ 803	\$ 2,409
Nursing	Equipment Storage Room, OR, Gen Surg	Erbe	Erbe Water Jet	Medical Equipment	New	1	\$ 25,000	\$ 25,000
Nursing	Equipment Storage Room, OR, Gen Surg	Olympus	Endo Tower *** colonoscopy EDG set-up CSR implicat	Medical Equipment	New	1	\$ 165,000	\$ 165,000
Nursing	Equipment Storage Room, OR, Gen Surg	Karl Storz	Digital X-link with CCU	Medical Equipment	New	2	\$ 23,500	\$ 47,000
Nursing	Equipment Storage Room, OR, Gen Surg	Alimed	Clark Socket 2PK	Medical Equipment	New	10	\$ 409	\$ 4,090
Nursing	Equipment Storage Room, OR, Gen Surg	Alimed	Candy Cane Stirrups gel ankle pads	Medical Equipment	New	3	\$ 150	\$ 450
Nursing	Equipment Storage Room, OR, Gen Surg	Alimed	Candy Cane Stirrups	Medical Equipment	New	3	\$ 720	\$ 2,160
Nursing	Equipment Storage Room, OR, Gen Surg	Karl Storz	3D Console (H3 Link \$7k) - NOTE NEED TO ADD \$5	Medical Equipment	New	2	\$ 7,000	\$ 14,000
Nursing	Equipment Storage Room, OR, Gen Surg	Karl Storz	3D Capable Monitors - total between 3 rooms	Medical Equipment	New	6	\$ 15,000	\$ 90,000
Nursing	Equipment Storage Room, OR, GYN	Metro	Cart - supply - metro	Medical Equipment	New	1	\$ 1,500	\$ 1,500
Nursing	Equipment Storage Room, OR, GYN	Conmed	Airseal	Medical Equipment	New	3	\$ 35,000	\$ 105,000
Nursing	Equipment Storage Room, OR, Hips	Synthes	Navigation - Velys	Medical Equipment	New	1	\$ 110,000	\$ 110,000
Nursing	Equipment Storage Room, OR, Hips	Mizuho OSI	Hana Table	Medical Equipment	New	1	\$ 80,000	\$ 80,000
	Equipment Storage Room, OR, Hyterscopies	Hill Rom	Yellow Fins Cart	Medical Equipment	New	4	\$ 661	\$ 2,644
Nursing	Equipment Storage Room, OR, Hyterscopies	Hill Rom	Yellow Fins	Medical Equipment	New	4	\$ 9,500	\$ 38,000
Nursing	Equipment Storage Room, OR, Hyterscopies	GE S8	Ultrasound	Medical Equipment	New	4	\$ 85,000	\$ 340,000
Nursing	Equipment Storage Room, OR, Hyterscopies	Skytron	Transfer Board	Medical Equipment	New	2	\$ 1,075	\$ 2,150
Nursing	Equipment Storage Room, OR, Hyterscopies	Hologic	Novasure	Medical Equipment	New	1	\$ 30,000	\$ 30,000
Nursing	Equipment Storage Room, OR, Hyterscopies	Ethicon	Harmonic Scalpel - GEN 11 generator	Medical Equipment	New	3	\$ 10,000	\$ 30,000
Nursing	Equipment Storage Room, OR, Hyterscopies	Hologic	Fluid Management System	Medical Equipment	New	2	\$ 28,000	\$ 56,000
Nursing	Equipment Storage Room, OR, Hyterscopies	Lumenis	Fixed arm CO2 laser w micromanipulator (share with	Medical Equipment	New	1	\$ 140,000	\$ 140,000
Nursing	Equipment Storage Room, OR, Hyterscopies	Karl Zeiss	Culpul microscope	Medical Equipment	New	1	\$ 125,000	\$ 125,000
Nursing	Equipment Storage Room, OR, Hyterscopies	Karl Storz	Camera Box Towers	Medical Equipment	New	3	\$ 165,000	\$ 495,000
Nursing	Equipment Storage Room, OR, Hyterscopies	Olympus	Birkley Aspirator	Medical Equipment	New	1	\$ 7,000	\$ 7,000
Nursing	Equipment Storage Room, OR, Hyterscopies	Myosure Hologic	Ablation	Medical Equipment	New	2	\$ 10,000	\$ 20,000
Nursing	Knees	Inomed or Bone foam	Hip Pad Foam Set	Medical Equipment	New	2	\$ 2,400	\$ 4,800
Nursing	Equipment Storage Room, OR, Ortho Knees	Stryker	Total Knee Robot Mako	Robotics	New	1	\$ 950,000	\$ 950,000

Clinical	Area	Venor	Description	Category	Condition	Qty	Unit Price	Extended
Nursing	Equipment Storage Room, OR, Ortho Knees	Stryker	Helmet & hood	Medical Equipment	New	10	\$ 5,000	\$ 50,000
Nursing	Equipment Storage Room, OR, Ortho Knees	Stryker	Drills and saws sets (assuming 3 + cases per day)	Medical Equipment	New	3	\$ 30,000	\$ 90,000
Nursing	Equipment Storage Room, OR, Ortho Knees	Stryker	Battery charger for helmet	Medical Equipment	New	2	\$ 5,000	\$ 10,000
Nursing	Equipment Storage Room, OR, Plastic & Breast	Wells Johnson	Wells Johnson infusion and liposuction machine	Medical Equipment	New	1	\$ 8,000	\$ 8,000
Nursing	Equipment Storage Room, OR, Plastic & Breast	Covidien	Vital View (light source)	Medical Equipment	New	1	\$ 1,200	\$ 1,200
Nursing	Equipment Storage Room, OR, Plastic & Breast	Stryker	Spyellite	Medical Equipment	New	1	\$ 276,000	\$ 276,000
Nursing	Equipment Storage Room, OR, Plastic & Breast	Nova Medix	NovaMedix impulse system model 6060	Medical Equipment	New	1	\$ 5,000	\$ 5,000
Nursing	Equipment Storage Room, OR, Plastic & Breast	Mammotome	Neoprobe machine (ARE THESE DUPS)	Medical Equipment	New	1	\$ 23,000	\$ 23,000
Nursing	Equipment Storage Room, OR, Plastic & Breast	Hologic	Faxitron OR Specimen Rad System	Medical Equipment	New	1	\$ 250,000	\$ 250,000
Nursing	Equipment Storage Room, OR, Plastic & Breast	Carewise	Corded Probe	Medical Equipment	New	1	\$ 18,000	\$ 18,000
Nursing	Equipment Storage Room, OR, Plastic & Breast	Drucker	Centrifuge	Medical Equipment	New	1	\$ 3,000	\$ 3,000
Nursing	Equipment Storage Room, OR, Plastic & Breast	Mammotome	Bluetooth Cordless Probe (ARE THESE DUPS)	Medical Equipment	New	1	\$ 23,000	\$ 23,000
Nursing	Equipment Storage Room, OR, Postierior Hips		Stand, Ring	Medical Equipment	New	3	\$ 300	\$ 900
Nursing	Equipment Storage Room, OR, Postierior Hips	Inomed	Leg Stabilizer	Medical Equipment	New	1	\$ 524	\$ 524
Nursing	Equipment Storage Room, OR, Postierior Hips	Inomed	Hip rest lateral positioners	Medical Equipment	New	1	\$ 2,405	\$ 2,405
Nursing	Equipment Storage Room, OR, Postierior Hips	Inomed	Durham Leg Positioners	Medical Equipment	New	2	\$ 878	\$ 1,756
Nursing	Equipment Storage Room, OR, Postierior Hips	Bone Foam	Bone Rest	Medical Equipment	New	1	\$ 1,000	\$ 1,000
Radiology	Equipment Storage Room, OR, Radiology		X-Ray, Portable	Radiology	New	1	\$ 150,000	\$ 150,000
Radiology	Equipment Storage Room, OR, Radiology		C-Arm, Mini	Radiology	New	1	\$ 140,000	\$ 140,000
Radiology	Equipment Storage Room, OR, Radiology		C-Arm, large	Medical Equipment	New	1	\$ 250,000	\$ 250,000
Nursing	Equipment Storage Room, OR, Sports Medicine	Smith & Nephew - lease	NEW 4K S&N video/tower/equipment drills/saws/pos	Medical Equipment	New	1	\$ 1,700,000	\$ 1,700,000
Nursing	Equipment Storage Room, OR, Sports Medicine	CME Corp	Cart (for printer) - (fit on tower)	Medical Equipment	New	5	\$ 2,000	\$ 10,000
Nursing	Equipment Storage Room, OR, Upper Extremity	Alimed	Hand Table-Hour glass	Medical Equipment	New	4	\$ 2,345	\$ 9,380
Nursing	Equipment Storage Room, OR, Upper Extremity	Karl Zeiss	Hand Microscope	Medical Equipment	New	1	\$ 170,000	\$ 170,000
Nursing	Equipment Storage Room, OR, Upper Extremity	Alimed	Gel Rolls (variety of sizes and need sets)	Medical Equipment	New	12	\$ 450	\$ 5,400
Nursing	Equipment Storage Room, OR, Upper Extremity	Alimed	Bean Bags	Medical Equipment	New	5	\$ 993	\$ 4,965
Pathology	Frozen Section Room	Thermo Fisher	Refrigerator, Lab Grade, Needs Temtrack	Pathology	New	1	\$ 7,000	\$ 7,000
Pathology	Frozen Section Room	Pamero Health - WH290 - 109	Holder, Oxiver	Environmental Service	New	1	\$ 34	\$ 34
Pathology	Frozen Section Room	Mopec MG100 Ergogross Elevating Workstation	Grossing Station	Pathology	New	1	\$ 40,000	\$ 40,000
Pathology	Frozen Section Room	New Brunswick Ultra-Low Temperature Frezer U101 II	Freezer, Lab Grade	Pathology	New	1	\$ 9,000	\$ 9,000
Pathology	Frozen Section Room	Thermo Scientific HM525 NX	Cryostat	Pathology	New	1	\$ 30,000	\$ 30,000
Pathology	Frozen Section Room	Protectoseal 30 Gallon Flammable Liquids Storage	Cabinet, Explosive	Pathology	New	1	\$ 700	\$ 700
Pathology	Frozen Section Room	Thermo Scientific PrintMate AS	Block Engraver	Pathology	New	1	\$ 30,000	\$ 30,000
Nursing	Frozen Tissue Room		Refrigerator, Large	Facilities	New	1	\$ 10,000	\$ 10,000
Nursing	Frozen Tissue Room	Pamero Health - WH290 - 109	Holder, Oxiver	Environmental Service	New	1	\$ 34	\$ 34
Nursing	Frozen Tissue Room		Freezer, Subzero	Facilities	New	1	\$ 10,000	\$ 10,000
Nursing	Frozen Tissue Room		Cabinet, Storage	Medical Equipment	New	2	\$ 1,000	\$ 2,000
EVS	Housekeeping Closet, CRS, Decontamination	Advance, SC500 Walk-Behind Scrubber (REV)	Scrubber, Auto	Environmental Service	New	1	\$ 7,000	\$ 7,000
EVS	Housekeeping Closet, OR	GoFree	Vacuum, Backpack	Environmental Service	New	1	\$ 1,000	\$ 1,000
EVS	Housekeeping Closet, OR	Xenex Pathogen UVM Light System	UV Light Cleaning System	Environmental Service	New	1	\$ 85,000	\$ 85,000
EVS	Housekeeping Closet, OR	Advance, SC500 Walk-Behind Scrubber (REV)	Scrubber, Auto	Environmental Service	New	2	\$ 7,000	\$ 14,000
EVS	Housekeeping Closet, OR	Grainger, High-Maneuverability Cube Truck, 4UR40	Gondola, Linen, soiled	Environmental Service	New	1	\$ 1,800	\$ 1,800
EVS	Housekeeping Closet, OR	Grainger, Rubbermaid 9T75 High Security Janitor Car	Cart, Specialty	Environmental Service	New	2	\$ 900	\$ 1,800
EVS	Housekeeping Storage Room	Windsor Karcher Group, Titan	Vacuum, Wet-Dry	Environmental Service	New	2	\$ 500	\$ 1,000

Clinical	Area	Venor	Description	Category	Condition	Qty	Unit Price	Extended
EVS	Housekeeping Storage Room	Pacesetter Floor Machines	Scrubber, Auto, Side/Side, 20HD	Environmental Service	New	2	\$ 1,500	\$ 3,000
EVS	Housekeeping Storage Room	Windsor Karcher Group, Chariot	Scrubber, Auto, iScrub	Environmental Service	New	1	\$ 13,000	\$ 13,000
EVS	Housekeeping Storage Room	Windsor Karcher Group, WindHandler 3	Floor Fan	Environmental Service	New	2	\$ 300	\$ 600
EVS	Housekeeping Storage Room	Windsor karcher Group	Extractor, Carpet, Clipper Duo	Environmental Service	New	1	\$ 3,100	\$ 3,100
EVS	Housekeeping Storage Room	Royce Rolls Ringer Company, 20C	Double Tank Sets, Non-Tapered, Half Oval	Environmental Service	New	2	\$ 352	\$ 704
EVS	Housekeeping Storage Room	Royce Rolls Ringer Company #7375	Casters, Replacement	Environmental Service	New	8	\$ 13	\$ 104
EVS	Housekeeping Storage Room		Cart, Project Carts	Environmental Service	New	1	\$ 1,500	\$ 1,500
EVS	Housekeeping Storage Room	Royce Rolls Ringer Company, 29XH Platform	Cart, Platform	Environmental Service	New	2	\$ 800	\$ 1,600
EVS	Housekeeping Storage Room	Royce Rolls Ringer Company, C36 Stainless Steel	Cart, Housekeeping	Environmental Service	New	2	\$ 1,000	\$ 2,000
EVS	Housekeeping Storage Room	Karcher	Brunisher, Lightning	Environmental Service	New	1	\$ 3,100	\$ 3,100
HR	Lactation Room, First Floor	Thermo	Table, End, Square 24"x20"	Furnishings/Equip	New	1	\$ 767	\$ 767
HR	Lactation Room, First Floor	Integra, Rend	Chair, Guest, Tablet	Furnishings/Equip	New	1	\$ 2,500	\$ 2,500
HR	Lactation Room, Ground	Thermo	Table, End, Square 24"x20"	Furnishings/Equip	New	1	\$ 767	\$ 767
HR	Lactation Room, Ground	Integra, Rend	Chair, Guest, Tablet	Furnishings/Equip	New	1	\$ 2,500	\$ 2,500
Distribution	Linen Room, Prep		Gondola, Linen, clean	Distribution	New	1	\$ 1,500	\$ 1,500
Distribution	Linen Room, Prep	Claflin or Medline	Blanket Warmer, w/temptrak	Medical Equipment	New	1	\$ 4,000	\$ 4,000
Distribution	Linen Room, Recovery Phase 1		Gondola, Linen, clean	Distribution	New	1	\$ 1,500	\$ 1,500
Distribution	Linen Room, Recovery Phase 1	Claflin or Medline	Blanket Warmer, w/temptrak	Medical Equipment	New	1	\$ 4,000	\$ 4,000
Distribution	Linen Room, Recovery Phase 2		Gondola, Linen, clean	Distribution	New	1	\$ 1,500	\$ 1,500
Distribution	Linen Room, Recovery Phase 2	Claflin or Medline	Blanket Warmer, w/temptrak	Medical Equipment	New	1	\$ 4,000	\$ 4,000
Distribution	Loading & Receiving Area		Tugger System	Distribution	New	1	\$ 5,000	\$ 5,000
Distribution	Loading & Receiving Area	VMF	Steel Brackets	Distribution	New	6	\$ 350	\$ 2,100
Distribution	Loading & Receiving Area		Mat, Anti-Fatigue	Distribution	New	2	\$ 125	\$ 250
Distribution	Loading & Receiving Area	VMF	Hitch for Tugger System	Distribution	New	6	\$ 300	\$ 1,800
Distribution	Loading & Receiving Area		Gondola, Linen, soiled	Distribution	New	6	\$ 2,000	\$ 12,000
Distribution	Loading & Receiving Area	Hawroth, Improv	Chair, Task, Stool, w/o Arms	Furnishings/Equip	New	2	\$ 1,079	\$ 2,158
Distribution	Loading & Receiving Area		Cart, Delivery, Metro, 36"x24"	Distribution	New	4	\$ 1,000	\$ 4,000
Distribution	Loading & Receiving Area		Battery Charging Station, Tugger System	Distribution	New	1	\$ 2,000	\$ 2,000
All	Lobby		Donor Feature	Facilities	New	1	\$ 10,000	\$ 10,000
All	Locker, Patient/Family	Office Environments	Lockers	Furnishings/Equip	New	1	\$ 11,271	\$ 11,271
Nursing	Louge, Team	Grainger - 4PGU8	Trash, 23 Gallon	Environmental Service	New	2	\$ 80	\$ 160
Nursing	Louge, Team	WB Mason	Toaster, 4 slice , Bagel	Nutrition	New	1	\$ 200	\$ 200
Nursing	Louge, Team	Office Environments/Haworth	Table, Square, 36"	Furnishings/Equip	New	11	\$ 435	\$ 4,785
Nursing	Louge, Team		Refrigerator w/freezer	Facilities	New	2	\$ 1,500	\$ 3,000
Nursing	Louge, Team	Grainger - 4PGU9	Recycle, 23 Gallon	Environmental Service	New	2	\$ 70	\$ 140
Nursing	Louge, Team	La-Z-Boy	Chair, Staff, Recliner	Furnishings/Equip	New	2	\$ 4,123	\$ 8,246
Nursing	Louge, Team	http://products.geappliances.com/appliance/gea-prod	Microwave	Nutrition	New	1	\$ 300	\$ 300
Nursing	Louge, Team	Vermont Plastic	Hand Sanitizer Guard	Environmental Service	New	1	\$ 15	\$ 15
Nursing	Louge, Team	WB Mason	Coffee Maker	Furnishings/Equip	New	1	\$ 500	\$ 500
Nursing	Louge, Team	Haworth, Very Stools	Chair, Stool, Staff, no wheels	Furnishings/Equip	New	8	\$ 498	\$ 3,984
Nursing	Louge, Team	Rend	Chair, Staff, Tablet	Furnishings/Equip	New	2	\$ 1,707	\$ 3,414
Nursing	Louge, Team	Haworth, Very Side	Chair, Side, Staff	Furnishings/Equip	New	24	\$ 214	\$ 5,136
Nursing	Louge, Team	WB Mason	Board, bulletin, foam 3'x2'	Furnishings/Equip	New	1	\$ 55	\$ 55
Nursing	Med Clean Room, Prep	Grainger - 4PGU8	Trash, 23 gallon	Environmental Service	New	1	\$ 80	\$ 80

Clinical	Area	Venor	Description	Category	Condition	Qty	Unit Price	Extended
Nursing	Med Clean Room, Prep	Follett REF2, Mediclick, 90126	Refrigerator, Medicaion, Needs Temptrack	Facilities	New	1	\$ 2,000	\$ 2,000
Nursing	Med Clean Room, Prep	Follett REF5, Mediclick, 90137	Refrigerator, Medicaion, Needs Temptrack	Facilities	New	1	\$ 2,500	\$ 2,500
Nursing	Med Clean Room, Prep	Grainger - 4PGU9	Recycle, 23 Gallon	Environmental Service	New	1	\$ 70	\$ 70
Nursing	Med Clean Room, Prep	Pamero Health - WH290 - 109	Holder, Oxiver	Environmental Service	New	1	\$ 34	\$ 34
Nursing	Med Clean Room, Prep		Hand Sanitizer Guard	Environmental Service	New	10	\$ 15	\$ 150
Nursing	Med Clean Room, Prep		Dispenser, Label	Medical Equipment	New	1	\$ 100	\$ 100
Nursing	Med Clean Room, Recovery Phase 1	Grainger - 4PGU8	Trash, 23 gallon	Environmental Service	New	1	\$ 80	\$ 80
Nursing	Med Clean Room, Recovery Phase 1	Follett REF2, Mediclick, 90126	Refrigerator, Medicaion, Needs Temptrack	Facilities	New	1	\$ 2,000	\$ 2,000
Nursing	Med Clean Room, Recovery Phase 1	Follett REF5, Mediclick, 90137	Refrigerator, Medicaion, Needs Temptrack	Facilities	New	1	\$ 2,500	\$ 2,500
Nursing	Med Clean Room, Recovery Phase 1	Grainger - 4PGU9	Recycle, 23 Gallon	Environmental Service	New	1	\$ 70	\$ 70
Nursing	Med Clean Room, Recovery Phase 1	Pamero Health - WH290 - 109	Holder, Oxiver	Environmental Service	New	1	\$ 34	\$ 34
Nursing	Med Clean Room, Recovery Phase 1		Hand Sanitizer Guard	Environmental Service	New	10	\$ 15	\$ 150
Nursing	Med Clean Room, Recovery Phase 1		Dispenser, Label	Medical Equipment	New	1	\$ 100	\$ 100
Nursing	Med Clean Room, Recovery Phase 2	Grainger - 4PGU8	Trash, 23 gallon	Environmental Service	New	1	\$ 80	\$ 80
Nursing	Med Clean Room, Recovery Phase 2	Follett REF2, Mediclick, 90126	Refrigerator, Medicaion, Needs Temptrack	Facilities	New	1	\$ 2,000	\$ 2,000
Nursing	Med Clean Room, Recovery Phase 2	Follett REF5, Mediclick, 90137	Refrigerator, Medicaion, Needs Temptrack	Facilities	New	1	\$ 2,500	\$ 2,500
Nursing	Med Clean Room, Recovery Phase 2	Grainger - 4PGU9	Recycle, 23 Gallon	Environmental Service	New	1	\$ 70	\$ 70
Nursing	Med Clean Room, Recovery Phase 2	Pamero Health - WH290 - 109	Holder, Oxiver	Environmental Service	New	1	\$ 34	\$ 34
Nursing	Med Clean Room, Recovery Phase 2		Hand Sanitizer Guard	Environmental Service	New	10	\$ 15	\$ 150
Nursing	Med Clean Room, Recovery Phase 2		Dispenser, Label	Medical Equipment	New	1	\$ 100	\$ 100
EVS	Mini-Laundry		Washing Machine, Commercial	Environmental Service	New	2	\$ 14,000	\$ 28,000
Nursing	Mini-Laundry	Pamero Health - WH290 - 109	Holder, Oxiver	Environmental Service	New	1	\$ 34	\$ 34
EVS	Mini-Laundry		Hand Sanitizer Guard	Environmental Service	New	10	\$ 15	\$ 150
EVS	Mini-Laundry		Dryer, Commercial	Environmental Service	New	2	\$ 6,000	\$ 12,000
Nursing	Nourishment, Recovery Phase 1	Grainger - 4PGU8	Trash, 23 Gallon	Environmental Service	New	1	\$ 80	\$ 80
Nursing	Nourishment, Recovery Phase 1	Beverage Air Model HRP1-1S	Refrigerator, Commercial, Temptrack	Facilities	New	1	\$ 8,000	\$ 8,000
Nursing	Nourishment, Recovery Phase 1	Grainger - 4PGU9	Recycle, 23 Gallon	Environmental Service	New	1	\$ 70	\$ 70
Nursing	Nourishment, Recovery Phase 1		Ice/Water Machine	Facilities	New	1	\$ 4,000	\$ 4,000
Nursing	Nourishment, Recovery Phase 1	Pamero Health - WH290 - 109	Holder, Oxiver	Environmental Service	New	1	\$ 34	\$ 34
Nursing	Nourishment, Recovery Phase 1		Hand Sanitizer Guard	Environmental Service	New	10	\$ 15	\$ 150
Nursing	Nourishment, Recovery Phase 1	Beverage Air Model UCF20	Freezer, Commercial, Undercounter, Temptrack	Facilities	New	1	\$ 3,000	\$ 3,000
Nursing	Nourishment, Recovery Phase 1		Compost	Nutrition	New	2	\$ 15	\$ 30
Nursing	Nourishment, Recovery Phase 1	Plumbed	Coffee Maker	Nutrition	New	1	\$ 550	\$ 550
Nursing	Nourishment, Recovery Phase 1		Bins	Nutrition	New	10	\$ 20	\$ 200
Nursing	Nourishment, Recovery Phase 2	Grainger - 4PGU8	Trash, 23 Gallon	Environmental Service	New	1	\$ 80	\$ 80
Nursing	Nourishment, Recovery Phase 2		Toaster, 2 Slice, Bagel	Facilities	New	1	\$ 125	\$ 125
Nursing	Nourishment, Recovery Phase 2	Beverage Air Model HRP1-1S	Refrigerator, Commercial, Temptrack	Facilities	New	1	\$ 8,000	\$ 8,000
Nursing	Nourishment, Recovery Phase 2	Grainger - 4PGU9	Recycle, 23 Gallon	Environmental Service	New	1	\$ 70	\$ 70
Nursing	Nourishment, Recovery Phase 2		Microwave	Facilities	New	1	\$ 150	\$ 150
Nursing	Nourishment, Recovery Phase 2		Ice/Water Machine	Facilities	New	1	\$ 4,000	\$ 4,000
Nursing	Nourishment, Recovery Phase 2	Pamero Health - WH290 - 109	Holder, Oxiver	Environmental Service	New	1	\$ 34	\$ 34
Nursing	Nourishment, Recovery Phase 2		Hand Sanitizer Guard	Environmental Service	New	10	\$ 15	\$ 150
Nursing	Nourishment, Recovery Phase 2	Beverage Air Model UCF20	Freezer, Commercial, Undercounter, Temptrack	Facilities	New	1	\$ 3,000	\$ 3,000
Nursing	Nourishment, Recovery Phase 2		Compost	Nutrition	New	2	\$ 15	\$ 30

Clinical	Area	Venor	Description	Category	Condition	Qty	Unit Price	Extended
Nursing	Nourishment, Recovery Phase 2	Plumbed	Coffee Maker	Nutrition	New	1	\$ 550	\$ 550
Nursing	Nourishment, Recovery Phase 2		Bins	Nutrition	New	10	\$ 20	\$ 200
Nursing	Nourishment, Recovery Prep		Ice/Water Machine	Facilities	New	1	\$ 4,000	\$ 4,000
Nursing	Nourishment, Recovery Prep	Pamero Health - WH290 - 109	Holder, Oxiver	Environmental Service	New	1	\$ 34	\$ 34
Nursing	Nourishment, Recovery Prep		Hand Sanitizer Guard	Environmental Service	New	10	\$ 15	\$ 150
Physician	Office, Anesthesia	Grainger - 4PGN7	Trash, 28-Quart	Environmental Service	New	1	\$ 15	\$ 15
Physician	Office, Anesthesia	Grainger, 4UAU5	Recycle, 28-Quart	Environmental Service	New	1	\$ 15	\$ 15
Physician	Office, Anesthesia	X Series	File, Ped, Box, Box, File, Mobile	Furnishings/Equip	New	1	\$ 515	\$ 515
Physician	Office, Anesthesia	X Series	Desk, 60"x30"	Furnishings/Equip	New	1	\$ 1,164	\$ 1,164
Physician	Office, Anesthesia	Very Task	Chairs, Task, w/o Arms	Furnishings/Equip	New	1	\$ 701	\$ 701
Nursing	Office, Assistant Nurse Manager	Grainger - 4PGN7	Trash, 28-Quart	Environmental Service	New	1	\$ 15	\$ 15
Nursing	Office, Assistant Nurse Manager	Office Environments	Table, Round, 30"	Furnishings/Equip	New	1	\$ 394	\$ 394
Nursing	Office, Assistant Nurse Manager	Grainger, 4UAU5	Recycle, 28-Quart	Environmental Service	New	1	\$ 15	\$ 15
Nursing	Office, Assistant Nurse Manager	X Series	File Cabinet, Lateral 4 drawer, 36" wide	Furnishings/Equip	New	1	\$ 1,190	\$ 1,190
Nursing	Office, Assistant Nurse Manager	Office Environments	Desk 6x6 w/6/6/12 ped and 12/12 ped	Furnishings/Equip	New	1	\$ 2,327	\$ 2,327
Nursing	Office, Assistant Nurse Manager	Very	Chairs, Task, w/o Arms	Furnishings/Equip	New	1	\$ 679	\$ 679
Nursing	Office, Assistant Nurse Manager	Haworth, Improv	Chair, Side, Staff	Furnishings/Equip	New	4	\$ 292	\$ 1,168
Nursing	Office, Assistant Nurse Manager	WB Mason	Board, bulletin, foam 3'x2'	Furnishings/Equip	New	1	\$ 55	\$ 55
Physician	Office, Dictation	Grainger - 4PGN7	Trash, 28-Quart	Environmental Service	New	2	\$ 15	\$ 30
Physician	Office, Dictation	Jive	Table, Round, 30"	Furnishings/Equip	New	1	\$ 363	\$ 363
Physician	Office, Dictation	Grainger, 4UAU5	Recycle, 28-Quart	Environmental Service	New	2	\$ 15	\$ 30
Physician	Office, Dictation	Haworth	Modular, Cubicles, 4'x30",w/panels	Furnishings/Equip	New	1	\$ 27,260	\$ 27,260
Physician	Office, Dictation		Chairs, Task, w/o Arms	Furnishings/Equip	New	18	\$ 701	\$ 12,618
Physician	Office, Dictation	Haworth	Chair, Side, Staff	Furnishings/Equip	New	2	\$ 214	\$ 428
Physician	Office, Dictation	WB Mason	Board, White 4'x3'	Furnishings/Equip	New	1	\$ 300	\$ 300
Nursing	Office, Director	Grainger - 5M875	Trash, Confidential	Environmental Service	New	1	\$ 200	\$ 200
Nursing	Office, Director	Grainger - 4PGN7	Trash, 28-Quart	Environmental Service	New	1	\$ 15	\$ 15
Nursing	Office, Director	Office Environments	Table, Round, 36"	Furnishings/Equip	New	1	\$ 435	\$ 435
Nursing	Office, Director	Grainger, 4UAU5	Recycle, 28-Quart	Environmental Service	New	1	\$ 15	\$ 15
Nursing	Office, Director	X Series	File Cabinet, Lateral 4 drawer, 36" wide	Furnishings/Equip	New	1	\$ 1,190	\$ 1,190
Nursing	Office, Director	Office Environments	Desk 6x6 w/6/6/12 ped and 12/12 ped	Furnishings/Equip	New	1	\$ 2,327	\$ 2,327
Nursing	Office, Director	Very	Chairs, Task, w/o Arms	Furnishings/Equip	New	1	\$ 679	\$ 679
Nursing	Office, Director	Haworth, Improv	Chair, Side, Staff	Furnishings/Equip	New	4	\$ 292	\$ 1,168
Nursing	Office, Director	WB Mason	Board, White 3'x4'	Furnishings/Equip	New	1	\$ 300	\$ 300
Nursing	Office, Director	WB Mason	Board, bulletin, foam 3'x2'	Furnishings/Equip	New	1	\$ 55	\$ 55
Distribution	Office, Distribution	Grainger - 4PGN7	Trash, 28-Quart	Environmental Service	New	1	\$ 15	\$ 15
Distribution	Office, Distribution	Grainger, 4UAU5	Recycle, 28-Quart	Environmental Service	New	1	\$ 15	\$ 15
Distribution	Office, Distribution		File, Ped, File, File, Mobile	Furnishings/Equip	New	1	\$ 430	\$ 430
Distribution	Office, Distribution		File, Ped, Box, Box, File, Mobile	Furnishings/Equip	New	1	\$ 454	\$ 454
Distribution	Office, Distribution	X Series	Desk, 60"x30"	Furnishings/Equip	New	1	\$ 1,164	\$ 1,164
Distribution	Office, Distribution	Very	Chairs, Task, w/o Arms	Furnishings/Equip	New	1	\$ 679	\$ 679
Distribution	Office, Distribution	Improv	Chair, Side, Staff	Furnishings/Equip	New	1	\$ 292	\$ 292
Nursing	Office, Educator	Grainger - 5M875	Trash, Confidential	Environmental Service	New	1	\$ 200	\$ 200
Nursing	Office, Educator	Grainger - 4PGN7	Trash, 28-Quart	Environmental Service	New	1	\$ 15	\$ 15

Clinical	Area	Venor	Description	Category	Condition	Qty	Unit Price	Extended
Nursing	Office, Educator	Office Environments	Table, Round, 30"	Furnishings/Equip	New	1	\$ 394	\$ 394
Nursing	Office, Educator	Grainger, 4UAU5	Recycle, 28-Quart	Environmental Service	New	1	\$ 15	\$ 15
Nursing	Office, Educator	X Series	File Cabinet, Lateral 4 drawer, 36" wide	Furnishings/Equip	New	1	\$ 1,190	\$ 1,190
Nursing	Office, Educator	Very	Chairs, Task, w/o Arms	Furnishings/Equip	New	1	\$ 679	\$ 679
Nursing	Office, Educator	Haworth, Improv	Chair, Side, Staff	Furnishings/Equip	New	2	\$ 292	\$ 584
Nursing	Office, Educator	WB Mason	Board, White 3'x2'	Furnishings/Equip	New	1	\$ 200	\$ 200
Nursing	Office, Educator	WB Mason	Board, bulletin, foam 3'x2'	Furnishings/Equip	New	1	\$ 55	\$ 55
EVS	Office, EVS	Grainger - 4PGN7	Trash, 28-Quart	Environmental Service	New	1	\$ 15	\$ 15
EVS	Office, EVS	Grainger, 4UAU5	Recycle, 28-Quart	Environmental Service	New	1	\$ 15	\$ 15
EVS	Office, EVS	X Series	File Cabinet, Lateral 4 drawer, 36" wide	Furnishings/Equip	New	1	\$ 1,260	\$ 1,260
EVS	Office, EVS		Desk, 60"x30"	Furnishings/Equip	New	1	\$ 1,164	\$ 1,164
EVS	Office, EVS	Very	Chairs, Task, w/o Arms	Furnishings/Equip	New	1	\$ 679	\$ 679
EVS	Office, EVS	Improv	Chair, Side, Staff	Furnishings/Equip	New	1	\$ 176	\$ 176
Nursing	Office, Hoteling, Work		Desk, 60"x30"	Furnishings/Equip	New	2	\$ 1,164	\$ 2,328
Nursing	Office, Hoteling, Work		Chairs, Task, w/o Arms	Furnishings/Equip	New	2	\$ 701	\$ 1,402
Nursing	Office, Nurse Manager	Grainger - 5M875	Trash, Confidential	Environmental Service	New	1	\$ 200	\$ 200
Nursing	Office, Nurse Manager	Grainger - 4PGN7	Trash, 28-Quart	Environmental Service	New	1	\$ 15	\$ 15
Nursing	Office, Nurse Manager	Office Environments	Table, Round, 30"	Furnishings/Equip	New	1	\$ 394	\$ 394
Nursing	Office, Nurse Manager	Grainger, 4UAU5	Recycle, 28-Quart	Environmental Service	New	1	\$ 15	\$ 15
Nursing	Office, Nurse Manager	X Series	File Cabinet, Lateral 4 drawer, 36" wide	Furnishings/Equip	New	1	\$ 1,190	\$ 1,190
Nursing	Office, Nurse Manager	Office Environments	Desk 6x6 w/6/6/12 ped and 12/12 ped	Furnishings/Equip	New	2	\$ 2,327	\$ 4,654
Nursing	Office, Nurse Manager	Very	Chairs, Task, w/o Arms	Furnishings/Equip	New	1	\$ 679	\$ 679
Nursing	Office, Nurse Manager	Haworth, Improv	Chair, Side, Staff	Furnishings/Equip	New	4	\$ 292	\$ 1,168
Nursing	Office, Nurse Manager	WB Mason	Board, White 3'x4'	Furnishings/Equip	New	1	\$ 300	\$ 300
Nursing	Office, Nurse Manager	WB Mason	Board, bulletin, foam 3'x2'	Furnishings/Equip	New	1	\$ 55	\$ 55
Nursing	Office, Pathology	Grainger - 4PGN7	Trash, 28-Quart	Environmental Service	New	1	\$ 15	\$ 15
Nursing	Office, Pathology	Grainger, 4UAU5	Recycle, 28-Quart	Environmental Service	New	1	\$ 15	\$ 15
Nursing	Office, Pathology		Microscope, Double headed	Pathology	New	1	\$ 17,000	\$ 17,000
Nursing	Office, Pathology	Office Environments	Desk w/Microscope Table	Furnishings/Equip	New	1	\$ 3,500	\$ 3,500
Nursing	Office, Pathology	Office Environments	Chairs, Task, w/o Arms	Furnishings/Equip	New	2	\$ 701	\$ 1,402
Nursing	Office, Pathology	Haworth	Chair, Side, Staff	Furnishings/Equip	New	1	\$ 2,300	\$ 2,300
Nursing	Office, Pathology	WB Mason	Board, White, 4'x3'	Furnishings/Equip	New	1	\$ 300	\$ 300
Nursing	Office, Pathology	WB Mason	Board, bulletin, foam 3'x2'	Furnishings/Equip	New	1	\$ 55	\$ 55
Physician	Office, Radiology, Reading		Desk, 60"x30"	Furnishings/Equip	New	2	\$ 1,164	\$ 2,328
Physician	Office, Radiology, Reading		Chairs, Task, w/o Arms	Furnishings/Equip	New	2	\$ 701	\$ 1,402
Security	Office, Security	Grainger - 5M875	Trash, Confidential	Environmental Service	New	1	\$ 200	\$ 200
Security	Office, Security	Grainger - 4PGN7	Trash, 28-Quart	Environmental Service	New	1	\$ 15	\$ 15
Security	Office, Security	Grainger, 4UAU5	Recycle, 28-Quart	Environmental Service	New	1	\$ 15	\$ 15
Security	Office, Security		Locker, Gun	Security	New	1	\$ 800	\$ 800
Security	Office, Security	X Series	File, Ped, Box, Box, File, Mobile	Furnishings/Equip	New	1	\$ 515	\$ 515
Security	Office, Security	X Series	File Cabinet, Lateral 4 drawer, 36" wide	Furnishings/Equip	New	1	\$ 845	\$ 845
Security	Office, Security	X Series	Desk 70"x30"	Furnishings/Equip	New	1	\$ 1,235	\$ 1,235
Security	Office, Security	Very	Chairs, Task, w/Arms	Furnishings/Equip	New	1	\$ 731	\$ 731
Security	Office, Security	WB Mason	Board, bulletin, foam 3'x2'	Furnishings/Equip	New	1	\$ 55	\$ 55

Clinical	Area	Venor	Description	Category	Condition	Qty	Unit Price	Extended
Nursing	Office, Touchdown	Grainger - 5M875	Trash, Confidential	Environmental Service	New	1	\$ 200	\$ 200
Nursing	Office, Touchdown	Grainger - 4PGN7	Trash, 28-Quart	Environmental Service	New	1	\$ 15	\$ 15
Nursing	Office, Touchdown	Office Environments	Table, Round, 36"	Furnishings/Equip	New	1	\$ 300	\$ 300
Nursing	Office, Touchdown	Grainger, 4UAU5	Recycle, 28-Quart	Environmental Service	New	1	\$ 15	\$ 15
Nursing	Office, Touchdown	X Series	Desk 70"x30"	Furnishings/Equip	New	1	\$ 1,235	\$ 1,235
Nursing	Office, Touchdown	Office Environments	Desk 6x6 w/6/6/12 ped and 12/12 ped	Furnishings/Equip	New	2	\$ 2,000	\$ 4,000
Nursing	Office, Touchdown	Office Environments	Chairs, Task, w/o Arms	Furnishings/Equip	New	1	\$ 701	\$ 701
Nursing	Office, Touchdown	Haworth	Chair, Side, Staff	Furnishings/Equip	New	2	\$ 176	\$ 352
Nursing	Office, Touchdown	WB Mason	Board, White 3'x4'	Furnishings/Equip	New	1	\$ 300	\$ 300
Nursing	Office, Workspace Team Lead	Grainger - 5M875	Trash, Confidential	Environmental Service	New	1	\$ 200	\$ 200
Nursing	Office, Workspace Team Lead	Grainger - 4PGN7	Trash, 28-Quart	Environmental Service	New	1	\$ 15	\$ 15
Nursing	Office, Workspace Team Lead	Grainger, 4UAU5	Recycle, 28-Quart	Environmental Service	New	1	\$ 15	\$ 15
Nursing	Office, Workspace Team Lead		Modular, Cubicles, 4'x30", w/panels	Furnishings/Equip	New	1	\$ 15,963	\$ 15,963
Nursing	Office, Workspace Team Lead		File, Ped, Box, Box, File, Mobile	Furnishings/Equip	New	8	\$ 515	\$ 4,120
Nursing	Office, Workspace Team Lead		Chairs, Task, w/o Arms	Furnishings/Equip	New	8	\$ 701	\$ 5,608
Nursing	OR Room #1	Infab	Thyroid shield		New	1	\$ 150	\$ 150
Nursing	OR Room #1	Skytron 3603	Table, Surgical, General	Medical Equipment	New	1	\$ 56,000	\$ 56,000
Nursing	OR Room #1	CME Corp	Table, Back, Small - 24 x 48 x 34	Medical Equipment	New	1	\$ 950	\$ 950
Nursing	OR Room #1	Universal Medical	Table, Back Instrument, Large - 24 x 60 x 34	Medical Equipment	New	1	\$ 1,000	\$ 1,000
Nursing	OR Room #1	Stryker	Stryker Core Console	Medical Equipment	New	1	\$ 17,000	\$ 17,000
Nursing	OR Room #1	Stryker	Stool, Stryker w/brake & hydraulic pump	Furnishings/Equip	New	2	\$ 1,500	\$ 3,000
Nursing	OR Room #1	Pedigo	Stool, Step	Medical Equipment	New	4	\$ 250	\$ 1,000
Nursing	OR Room #1	Office Environments	Stool, Anesthetist, W/Posture Back & Footrest	Medical Equipment	New	1	\$ 500	\$ 500
Nursing	OR Room #1	Medline	Stand, IV pole, Multi-Instrument W/6-legs	Medical Equipment	New	2	\$ 350	\$ 700
Nursing	OR Room #1	Stryker	Sink, Cactus, Wall Mount Narcotics disposal		New	1	\$ 500	\$ 500
Nursing	OR Room #1	Massimo	Sedation root monitor	Medical Equipment	New	1	\$ 5,500	\$ 5,500
Nursing	OR Room #1	Allen Medical	Seat Belt		New	2	\$ 300	\$ 600
Nursing	OR Room #1	Follett REF2, Mediclick, 90126	Refrigerator, Medicaion, Needs Temptrack	Medical Equipment	New	1	\$ 1,600	\$ 1,600
Nursing	OR Room #1	Grainger, 4UAU5	Recycle, 28-Quart	Environmental Service	New	2	\$ 15	\$ 30
Nursing	OR Room #1	Grainger	Recycle - Metal Slim Jim	Environmental Service	New	2	\$ 125	\$ 250
Nursing	OR Room #1	B Braun	Pump, Syringe		New	2	\$ 3,000	\$ 6,000
Nursing	OR Room #1	Belmont	Pump, Rapid Infuser	Medical Equipment	New	1	\$ 30,000	\$ 30,000
Nursing	OR Room #1	TBD	Pump, IV		New	2	\$ 3,000	\$ 6,000
Nursing	OR Room #1	Mercury Medical	Power Strips		New	2	\$ 200	\$ 400
Nursing	OR Room #1	Skytron	OR booms set up including 2 lights, 2 displays, anes b	Medical Equipment	New	1	\$ 154,007	\$ 154,007
Nursing	OR Room #1		Medical Vacuum Regulator	Medical Equipment	New	2	\$ 300	\$ 600
Nursing	OR Room #1	Airgas	Medical O2	Facilities	New	2	\$ 25	\$ 50
Nursing	OR Room #1	Airgas	Medical Air	Facilities	New	2	\$ 25	\$ 50
Nursing	OR Room #1	Carl Zeiss	Insufflator, CO2	Medical Equipment	New	1	\$ 16,000	\$ 16,000
Nursing	OR Room #1	Pamero Health - WH290 - 109	Holder, Oxiver	Environmental Service	New	1	\$ 34	\$ 34
Nursing	OR Room #1	Alimed	Holder, Lead Apron, Wall Mounted	Medical Equipment	New	1	\$ 425	\$ 425
Nursing	OR Room #1	Medline - MDS192094U	Holder, Glove, 4 Slot	Environmental Service	New	1	\$ 50	\$ 50
Nursing	OR Room #1	Universal Medical	Hamper, Trash, Metal, Slim Jim (anesthesia)	Environmental Service	New	1	\$ 125	\$ 125
Nursing	OR Room #1		Hamper, Trash, Metal, Slim Jim	Environmental Service	New	2	\$ 100	\$ 200

Clinical	Area	Venor	Description	Category	Condition	Qty	Unit Price	Extended
Nursing	OR Room #1	Universal Medical	Hamper, Linen, Soiled, Metal W/Step-on Pedal & Lid	Environmental Service	New	1	\$ 650	\$ 650
Nursing	OR Room #1	Medline	Container, Sharp, On Anesthesia Cart - 3 gallon		New	1	\$ 125	\$ 125
Nursing	OR Room #1	Medline	Container, Sharp, Floor w/foot pedal opening		New	1	\$ 300	\$ 300
Nursing	OR Room #1	CME - Large 12 gallon container with cart	Container, Sharp, Floor	Environmental Service	New	1	\$ 800	\$ 800
Nursing	OR Room #1	Office Environments	Chairs, Task, w/o Arms	Furnishings/Equip	New	2	\$ 700	\$ 1,400
Nursing	OR Room #1	Office Environments	Chair, Task, Stool, w/o Arms	Furnishings/Equip	New	1	\$ 1,079	\$ 1,079
Nursing	OR Room #1	Medtronic	Cart, Electrosurgery Unit, W/Baskets	Medical Equipment	New	1	\$ 17,000	\$ 17,000
Nursing	OR Room #1	Metro	Cart, Case, Enclosed, Surgical 48" 48" C-241823		New	1	\$ 3,500	\$ 3,500
Nursing	OR Room #1	Metro	Cart, Case, Enclosed, Surgical 36" shelf C-241822		New	1	\$ 3,500	\$ 3,500
Nursing	OR Room #1	Philips	Capsule neruon	Medical Equipment	New	1	\$ 4,000	\$ 4,000
Nursing	OR Room #1	Global Industrial	Caddy, Suture, Surgical		New	1	\$ 1,150	\$ 1,150
Nursing	OR Room #1	CME Corp	Bucket, Kick	Medical Equipment	New	1	\$ 325	\$ 325
Nursing	OR Room #1	Ergonomic Safety Solutions	Board, Transfer		New	1	\$ 650	\$ 650
Nursing	OR Room #1	Infab	Apron, Lead, Xtra-Large	Medical Equipment	New	1	\$ 475	\$ 475
Nursing	OR Room #1	Infab	Apron, Lead, Small	Medical Equipment	New	1	\$ 475	\$ 475
Nursing	OR Room #1	Infab	Apron, Lead, Medium	Medical Equipment	New	1	\$ 475	\$ 475
Nursing	OR Room #1	Infab	Apron, Lead, Large	Medical Equipment	New	1	\$ 475	\$ 475
Nursing	OR Room #1	Universal Medical or CME	Anesthesia Stand, Spinal, W/Drawers		New	1	\$ 800	\$ 800
Nursing	OR Room #1	Philips	Anesthesia Monitor	Medical Equipment	New	1	\$ 28,000	\$ 28,000
Nursing	OR Room #1	BD	Alaris Pump, Infusion, 1-Channel - (Lease	Medical Equipment	New	1	\$ 5,000	\$ 5,000
Nursing	OR Room #2	Infab	Thyroid shield	Medical Equipment	New	1	\$ 150	\$ 150
Nursing	OR Room #2	Skytron 3603	Table, Surgical, General	Medical Equipment	New	1	\$ 56,000	\$ 56,000
Nursing	OR Room #2	CME Corp	Table, Back, Small - 24 x 48 x 34	Medical Equipment	New	1	\$ 950	\$ 950
Nursing	OR Room #2	Universal Medical	Table, Back Instrument, Large - 24 x 60 x 34	Medical Equipment	New	1	\$ 1,000	\$ 1,000
Nursing	OR Room #2	Stryker	Stryker Core Console	Medical Equipment	New	1	\$ 17,000	\$ 17,000
Nursing	OR Room #2	Stryker	Stool, Stryker w/brake & hydraulic pump	Furnishings/Equip	New	2	\$ 1,500	\$ 3,000
Nursing	OR Room #2	Pedigo	Stool, Step	Medical Equipment	New	4	\$ 250	\$ 1,000
Nursing	OR Room #2	Office Environments	Stool, Anesthetist, W/Posture Back & Footrest	Furnishings/Equip	New	1	\$ 500	\$ 500
Nursing	OR Room #2	Medline	Stand, IV pole, Multi-Instrument W/6-legs	Medical Equipment	New	2	\$ 350	\$ 700
Nursing	OR Room #2	Stryker	Sink, Cactus, Wall Mount Narcotics disposal	Medical Equipment	New	1	\$ 500	\$ 500
Nursing	OR Room #2	Massimo	Sedation root monitor	Medical Equipment	New	1	\$ 5,500	\$ 5,500
Nursing	OR Room #2	Allen Medical	Seat Belt	Medical Equipment	New	2	\$ 300	\$ 600
Nursing	OR Room #2	Follett REF2, Mediclick, 90126	Refrigerator, Medicaion, Needs Temptrack	Medical Equipment	New	1	\$ 1,600	\$ 1,600
Nursing	OR Room #2	Grainger, 4UAU5	Recycle, 28-Quart	Environmental Service	New	2	\$ 15	\$ 30
Nursing	OR Room #2	Grainger	Recycle - Metal Slim Jim	Environmental Service	New	2	\$ 125	\$ 250
Nursing	OR Room #2	B Braun	Pump, Syringe	Medical Equipment	New	2	\$ 3,000	\$ 6,000
Nursing	OR Room #2	Belmont	Pump, Rapid Infuser	Medical Equipment	New	1	\$ 30,000	\$ 30,000
Nursing	OR Room #2	TBD	Pump, IV	Medical Equipment	New	2	\$ 3,000	\$ 6,000
Nursing	OR Room #2	Mercury Medical	Power Strips	Medical Equipment	New	2	\$ 200	\$ 400
Nursing	OR Room #2	Skytron	OR booms set up including 2 lights, 2 displays, anes b	Medical Equipment	New	1	\$ 154,007	\$ 154,007
Nursing	OR Room #2		Medical Vacuum Regulator	Medical Equipment	New	2	\$ 300	\$ 600
Nursing	OR Room #2	Airgas	Medical O2	Facilities	New	2	\$ 25	\$ 50
Nursing	OR Room #2	Airgas	Medical Air	Facilities	New	2	\$ 25	\$ 50
Nursing	OR Room #2	Carl Zeiss	Insufflator, CO2	Medical Equipment	New	1	\$ 16,000	\$ 16,000

Clinical	Area	Venor	Description	Category	Condition	Qty	Unit Price	Extended
Nursing	OR Room #2	Pamero Health - WH290 - 109	Holder, Oxiver	Environmental Service	New	1	\$ 34	\$ 34
Nursing	OR Room #2	Alimed	Holder, Lead Apron, Wall Mounted	Medical Equipment	New	1	\$ 425	\$ 425
Nursing	OR Room #2	Medline - MDS192094U	Holder, Glove, 4 Slot	Environmental Service	New	1	\$ 50	\$ 50
Nursing	OR Room #2	Universal Medical	Hamper, Trash, Metal, Slim Jim (anesthesia)	Environmental Service	New	1	\$ 100	\$ 100
Nursing	OR Room #2		Hamper, Trash, Metal, Slim Jim	Environmental Service	New	2	\$ 100	\$ 200
Nursing	OR Room #2	Universal Medical	Hamper, Linen, Soiled, Metal W/Step-on Pedal & Lid	Environmental Service	New	1	\$ 650	\$ 650
Nursing	OR Room #2	Medline	Container, Sharp, On Anesthesia Cart - 3 gallon	Medical Equipment	New	1	\$ 125	\$ 125
Nursing	OR Room #2	Medline	Container, Sharp, Floor w/foot pedal opening	Medical Equipment	New	1	\$ 800	\$ 800
Nursing	OR Room #2	CME - Large 12 gallon container with cart	Container, Sharp, Floor	Environmental Service	New	1	\$ 800	\$ 800
Nursing	OR Room #2	Office Environments	Chairs, Task, w/o Arms	Furnishings/Equip	New	2	\$ 700	\$ 1,400
Nursing	OR Room #2	Office Environments	Chair, Task, Stool, w/o Arms	Furnishings/Equip	New	1	\$ 1,079	\$ 1,079
Nursing	OR Room #2	Medtronic	Cart, Electrosurgery Unit, W/Baskets	Medical Equipment	New	1	\$ 17,000	\$ 17,000
Nursing	OR Room #2	Metro	Cart, Case, Enclosed, Surgical 48" 48" C-241823	Medical Equipment	New	1	\$ 3,500	\$ 3,500
Nursing	OR Room #2	Metro	Cart, Case, Enclosed, Surgical 36" shelf C-241822	Medical Equipment	New	1	\$ 3,500	\$ 3,500
Nursing	OR Room #2	Philips	Capsule neruon	Medical Equipment	New	1	\$ 4,000	\$ 4,000
Nursing	OR Room #2	Global Industrial	Caddy, Suture, Surgical	Medical Equipment	New	1	\$ 1,150	\$ 1,150
Nursing	OR Room #2	CME Corp	Bucket, Kick	Medical Equipment	New	1	\$ 325	\$ 325
Nursing	OR Room #2	Ergonomic Safety Solutions	Board, Transfer	Medical Equipment	New	1	\$ 650	\$ 650
Nursing	OR Room #2	Infab	Apron, Lead, Xtra-Large	Medical Equipment	New	1	\$ 475	\$ 475
Nursing	OR Room #2	Infab	Apron, Lead, Small	Medical Equipment	New	1	\$ 475	\$ 475
Nursing	OR Room #2	Infab	Apron, Lead, Medium	Medical Equipment	New	1	\$ 475	\$ 475
Nursing	OR Room #2	Infab	Apron, Lead, Large	Medical Equipment	New	1	\$ 475	\$ 475
Nursing	OR Room #2	Universal Medical or CME	Anesthesia Stand, Spinal, W/Drawers	Medical Equipment	New	1	\$ 800	\$ 800
Nursing	OR Room #2	Philips	Anesthesia Monitor	Medical Equipment	New	1	\$ 28,000	\$ 28,000
Nursing	OR Room #3	Infab	Thyroid shield	Medical Equipment	New	1	\$ 150	\$ 150
Nursing	OR Room #3	Skytron 3603	Table, Surgical, General	Medical Equipment	New	1	\$ 56,000	\$ 56,000
Nursing	OR Room #3	CME Corp	Table, Back, Small - 24 x 48 x 34	Medical Equipment	New	1	\$ 950	\$ 950
Nursing	OR Room #3	Universal Medical	Table, Back Instrument, Large - 24 x 60 x 34	Medical Equipment	New	1	\$ 1,000	\$ 1,000
Nursing	OR Room #3	Stryker	Stryker Core Console	Medical Equipment	New	1	\$ 17,000	\$ 17,000
Nursing	OR Room #3	Stryker	Stool, Stryker w/brake & hydraulic pump	Furnishings/Equip	New	2	\$ 1,500	\$ 3,000
Nursing	OR Room #3	Pedigo	Stool, Step	Medical Equipment	New	4	\$ 250	\$ 1,000
Nursing	OR Room #3	Office Environments	Stool, Anesthetist, W/Posture Back & Footrest	Furnishings/Equip	New	1	\$ 500	\$ 500
Nursing	OR Room #3	Medline	Stand, IV pole, Multi-Instrument W/6-legs	Medical Equipment	New	2	\$ 350	\$ 700
Nursing	OR Room #3	Stryker	Sink, Cactus, Wall Mount Narcotics disposal	Medical Equipment	New	1	\$ 500	\$ 500
Nursing	OR Room #3	Massimo	Sedation root monitor	Medical Equipment	New	1	\$ 5,500	\$ 5,500
Nursing	OR Room #3	Allen Medical	Seat Belt	Medical Equipment	New	2	\$ 300	\$ 600
Nursing	OR Room #3	Follett REF2, Mediclick, 90126	Refrigerator, Medicaion, Needs Temptrack	Medical Equipment	New	1	\$ 1,600	\$ 1,600
Nursing	OR Room #3	Grainger, 4UAU5	Recycle, 28-Quart	Environmental Service	New	2	\$ 15	\$ 30
Nursing	OR Room #3	Grainger	Recycle - Metal Slim Jim	Environmental Service	New	2	\$ 125	\$ 250
Nursing	OR Room #3	B Braun	Pump, Syringe	Medical Equipment	New	2	\$ 3,000	\$ 6,000
Nursing	OR Room #3	Belmont	Pump, Rapid Infuser	Medical Equipment	New	1	\$ 30,000	\$ 30,000
Nursing	OR Room #3	TBD	Pump, IV	Medical Equipment	New	2	\$ 3,000	\$ 6,000
Nursing	OR Room #3	Mercury Medical	Power Strips	Facilities	New	2	\$ 200	\$ 400
Nursing	OR Room #3	Skytron	OR booms set up including 2 lights, 2 displays, anes b	Medical Equipment	New	1	\$ 154,007	\$ 154,007

Clinical	Area	Venor	Description	Category	Condition	Qty	Unit Price	Extended
Nursing	OR Room #3		Medical Vacuum Regulator	Medical Equipment	New	2	\$ 300	\$ 600
Nursing	OR Room #3	Airgas	Medical O2	Facilities	New	2	\$ 25	\$ 50
Nursing	OR Room #3	Airgas	Medical Air	Facilities	New	2	\$ 25	\$ 50
Nursing	OR Room #3	Carl Zeiss	Insufflator, CO2	Medical Equipment	New	1	\$ 16,000	\$ 16,000
Nursing	OR Room #3	Pamero Health - WH290 - 109	Holder, Oxiver	Environmental Service	New	1	\$ 34	\$ 34
Nursing	OR Room #3	Alimed	Holder, Lead Apron, Wall Mounted	Medical Equipment	New	1	\$ 425	\$ 425
Nursing	OR Room #3	Medline - MDS192094U	Holder, Glove, 4 Slot	Environmental Service	New	1	\$ 50	\$ 50
Nursing	OR Room #3	Universal Medical	Hamper, Trash, Metal, Slim Jim (anesthesia)	Environmental Service	New	1	\$ 100	\$ 100
Nursing	OR Room #3		Hamper, Trash, Metal, Slim Jim	Environmental Service	New	2	\$ 100	\$ 200
Nursing	OR Room #3	Universal Medical	Hamper, Linen, Soiled, Metal W/Step-on Pedal & Lid	Environmental Service	New	1	\$ 650	\$ 650
Nursing	OR Room #3	Medline	Container, Sharp, On Anesthesia Cart - 3 gallon	Medical Equipment	New	1	\$ 125	\$ 125
Nursing	OR Room #3	CME - Large 12 gallon container with cart	Container, Sharp, Floor w/foot pedal opening	Environmental Service	New	1	\$ 800	\$ 800
Nursing	OR Room #3	Medline	Container, Sharp, Floor w/foot pedal opening	Medical Equipment	New	1	\$ 800	\$ 800
Nursing	OR Room #3	Office Environments	Chairs, Task, w/o Arms	Furnishings/Equip	New	2	\$ 700	\$ 1,400
Nursing	OR Room #3	Office Environments	Chair, Task, Stool, w/o Arms	Furnishings/Equip	New	1	\$ 1,079	\$ 1,079
Nursing	OR Room #3	Medtronic	Cart, Electrosurgery Unit, W/Baskets	Medical Equipment	New	1	\$ 17,000	\$ 17,000
Nursing	OR Room #3	Metro	Cart, Case, Enclosed, Surgical 48" 48" C-241823	Medical Equipment	New	1	\$ 3,500	\$ 3,500
Nursing	OR Room #3	Metro	Cart, Case, Enclosed, Surgical 36" shelf C-241822	Medical Equipment	New	1	\$ 3,500	\$ 3,500
Nursing	OR Room #3	Philips	Capsule neruon	Medical Equipment	New	1	\$ 4,000	\$ 4,000
Nursing	OR Room #3	Global Industrial	Caddy, Suture, Surgical	Medical Equipment	New	1	\$ 1,150	\$ 1,150
Nursing	OR Room #3	CME Corp	Bucket, Kick	Medical Equipment	New	1	\$ 325	\$ 325
Nursing	OR Room #3	Ergonomic Safety Solutions	Board, Transfer	Medical Equipment	New	1	\$ 650	\$ 650
Nursing	OR Room #3	Infab	Apron, Lead, Xtra-Large	Medical Equipment	New	1	\$ 475	\$ 475
Nursing	OR Room #3	Infab	Apron, Lead, Small	Medical Equipment	New	1	\$ 475	\$ 475
Nursing	OR Room #3	Infab	Apron, Lead, Medium	Medical Equipment	New	1	\$ 475	\$ 475
Nursing	OR Room #3	Infab	Apron, Lead, Large	Medical Equipment	New	1	\$ 475	\$ 475
Nursing	OR Room #3	Universal Medical or CME	Anesthesia Stand, Spinal, W/Drawers	Medical Equipment	New	1	\$ 800	\$ 800
Nursing	OR Room #3	Philips	Anesthesia Monitor	Medical Equipment	New	1	\$ 28,000	\$ 28,000
Nursing	OR Room #4	Infab	Thyroid shield	Medical Equipment	New	1	\$ 150	\$ 150
Nursing	OR Room #4	Skytron 3603	Table, Surgical, General	Medical Equipment	New	1	\$ 56,000	\$ 56,000
Nursing	OR Room #4	Stryker	Stryker Core Console	Medical Equipment	New	1	\$ 17,000	\$ 17,000
Nursing	OR Room #4	Stryker	Stool, Stryker w/brake & hydraulic pump	Furnishings/Equip	New	2	\$ 1,500	\$ 3,000
Nursing	OR Room #4	Pedigo	Stool, Step	Medical Equipment	New	4	\$ 250	\$ 1,000
Nursing	OR Room #4	Office Environments	Stool, Anesthetist, W/Posture Back & Footrest	Furnishings/Equip	New	1	\$ 500	\$ 500
Nursing	OR Room #4	Medline	Stand, IV pole, Multi-Instrument W/6-legs	Medical Equipment	New	2	\$ 350	\$ 700
Nursing	OR Room #4	Stryker	Sink, Cactus, Wall Mount Narcotics disposal	Medical Equipment	New	1	\$ 500	\$ 500
Nursing	OR Room #4	Massimo	Sedation root monitor	Medical Equipment	New	1	\$ 5,500	\$ 5,500
Nursing	OR Room #4	Allen Medical	Seat Belt	Medical Equipment	New	2	\$ 300	\$ 600
Nursing	OR Room #4	Follett REF2, Mediclick, 90126	Refrigerator, Medicaion, Needs Temptrack	Medical Equipment	New	1	\$ 1,600	\$ 1,600
Nursing	OR Room #4	Grainger, 4UAU5	Recycle, 28-Quart	Environmental Service	New	2	\$ 15	\$ 30
Nursing	OR Room #4	Grainger	Recycle - Metal Slim Jim	Environmental Service	New	2	\$ 125	\$ 250
Nursing	OR Room #4	B Braun	Pump, Syringe	Medical Equipment	New	2	\$ 3,000	\$ 6,000
Nursing	OR Room #4	Belmont	Pump, Rapid Infuser	Medical Equipment	New	1	\$ 30,000	\$ 30,000
Nursing	OR Room #4	TBD	Pump, IV	Medical Equipment	New	2	\$ 3,000	\$ 6,000

Clinical	Area	Venor	Description	Category	Condition	Qty	Unit Price	Extended
Nursing	OR Room #4	Mercury Medical	Power Strips	Facilities	New	2	\$ 200	\$ 400
Nursing	OR Room #4	Skytron	OR booms set up including 2 lights, 2 displays, anes b	Medical Equipment	New	1	\$ 154,007	\$ 154,007
Nursing	OR Room #4		Medical Vacuum Regulator	Medical Equipment	New	2	\$ 300	\$ 600
Nursing	OR Room #4	Airgas	Medical O2	Facilities	New	2	\$ 25	\$ 50
Nursing	OR Room #4	Airgas	Medical Air	Facilities	New	2	\$ 25	\$ 50
Nursing	OR Room #4	Carl Zeiss	Insufflator, CO2	Medical Equipment	New	1	\$ 16,000	\$ 16,000
Nursing	OR Room #4	Pamero Health - WH290 - 109	Holder, Oxiver	Environmental Service	New	1	\$ 34	\$ 34
Nursing	OR Room #4	Alimed	Holder, Lead Apron, Wall Mounted	Medical Equipment	New	1	\$ 425	\$ 425
Nursing	OR Room #4	Medline - MDS192094U	Holder, Glove, 4 Slot	Environmental Service	New	1	\$ 50	\$ 50
Nursing	OR Room #4	Universal Medical	Hamper, Trash, Metal, Slim Jim (anesthesia)	Environmental Service	New	1	\$ 100	\$ 100
Nursing	OR Room #4		Hamper, Trash, Metal, Slim Jim	Environmental Service	New	2	\$ 100	\$ 200
Nursing	OR Room #4	Universal Medical	Hamper, Linen, Soiled, Metal W/Step-on Pedal & Lid	Environmental Service	New	1	\$ 650	\$ 650
Nursing	OR Room #4	Medline	Container, Sharp, On Anesthesia Cart - 3 gallon	Medical Equipment	New	1	\$ 125	\$ 125
Nursing	OR Room #4	CME - Large 12 gallon container with cart	Container, Sharp, Floor w/foot pedal opening	Environmental Service	New	1	\$ 800	\$ 800
Nursing	OR Room #4	Medline	Container, Sharp, Floor w/foot pedal opening	Medical Equipment	New	1	\$ 800	\$ 800
Nursing	OR Room #4	Office Environments	Chairs, Task, w/o Arms	Furnishings/Equip	New	2	\$ 700	\$ 1,400
Nursing	OR Room #4	Office Environments	Chair, Task, Stool, w/o Arms	Furnishings/Equip	New	1	\$ 1,079	\$ 1,079
Nursing	OR Room #4	Medtronic	Cart, Electrosurgery Unit, W/Baskets	Medical Equipment	New	1	\$ 17,000	\$ 17,000
Nursing	OR Room #4	Metro	Cart, Case, Enclosed, Surgical 48" 48" C-241823	Medical Equipment	New	1	\$ 3,500	\$ 3,500
Nursing	OR Room #4	Metro	Cart, Case, Enclosed, Surgical 36" shelf C-241822	Medical Equipment	New	1	\$ 3,500	\$ 3,500
Nursing	OR Room #4	Philips	Capsule neruon	Medical Equipment	New	1	\$ 4,000	\$ 4,000
Nursing	OR Room #4	Global Industrial	Caddy, Suture, Surgical	Medical Equipment	New	1	\$ 1,150	\$ 1,150
Nursing	OR Room #4	CME Corp	Bucket, Kick	Medical Equipment	New	1	\$ 325	\$ 325
Nursing	OR Room #4	Ergonomic Safety Solutions	Board, Transfer	Medical Equipment	New	1	\$ 650	\$ 650
Nursing	OR Room #4	Infab	Apron, Lead, Xtra-Large	Medical Equipment	New	1	\$ 475	\$ 475
Nursing	OR Room #4	Infab	Apron, Lead, Small	Medical Equipment	New	1	\$ 475	\$ 475
Nursing	OR Room #4	Infab	Apron, Lead, Medium	Medical Equipment	New	1	\$ 475	\$ 475
Nursing	OR Room #4	Infab	Apron, Lead, Large	Medical Equipment	New	1	\$ 475	\$ 475
Nursing	OR Room #4	Universal Medical or CME	Anesthesia Stand, Spinal, W/Drawers	Medical Equipment	New	1	\$ 800	\$ 800
Nursing	OR Room #5	Infab	Thyroid shield	Medical Equipment	New	1	\$ 150	\$ 150
Nursing	OR Room #5	Skytron 3603	Table, Surgical, General	Medical Equipment	New	1	\$ 56,000	\$ 56,000
Nursing	OR Room #5	Stryker	Stryker Core Console	Medical Equipment	New	1	\$ 17,000	\$ 17,000
Nursing	OR Room #5	Stryker	Stool, Stryker w/brake & hydraulic pump	Furnishings/Equip	New	2	\$ 1,500	\$ 3,000
Nursing	OR Room #5	Pedigo	Stool, Step	Medical Equipment	New	4	\$ 250	\$ 1,000
Nursing	OR Room #5	Office Environments	Stool, Anesthetist, W/Posture Back & Footrest	Furnishings/Equip	New	1	\$ 500	\$ 500
Nursing	OR Room #5	Medline	Stand, IV pole, Multi-Instrument W/6-legs	Medical Equipment	New	2	\$ 350	\$ 700
Nursing	OR Room #5	Stryker	Sink, Cactus, Wall Mount Narcotics disposal	Medical Equipment	New	1	\$ 500	\$ 500
Nursing	OR Room #5	Massimo	Sedation root monitor	Medical Equipment	New	1	\$ 5,500	\$ 5,500
Nursing	OR Room #5	Allen Medical	Seat Belt	Medical Equipment	New	2	\$ 300	\$ 600
Nursing	OR Room #5	Follett REF2, Mediclick, 90126	Refrigerator, Medicaion, Needs Temptrack	Medical Equipment	New	1	\$ 1,600	\$ 1,600
Nursing	OR Room #5	Grainger, 4UAU5	Recycle, 28-Quart	Environmental Service	New	2	\$ 15	\$ 30
Nursing	OR Room #5	Grainger	Recycle - Metal Slim Jim	Environmental Service	New	2	\$ 125	\$ 250
Nursing	OR Room #5	B Braun	Pump, Syringe	Medical Equipment	New	2	\$ 3,000	\$ 6,000
Nursing	OR Room #5	Belmont	Pump, Rapid Infuser	Medical Equipment	New	1	\$ 30,000	\$ 30,000

Clinical	Area	Venor	Description	Category	Condition	Qty	Unit Price	Extended
Nursing	OR Room #5	TBD	Pump, IV	Medical Equipment	New	2	\$ 3,000	\$ 6,000
Nursing	OR Room #5	Mercury Medical	Power Strips	Facilities	New	2	\$ 200	\$ 400
Nursing	OR Room #5	Skytron	OR booms set up including 2 lights, 2 displays, anes b	Medical Equipment	New	1	\$ 154,007	\$ 154,007
Nursing	OR Room #5		Medical Vacuum Regulator	Medical Equipment	New	2	\$ 300	\$ 600
Nursing	OR Room #5	Airgas	Medical O2	Facilities	New	2	\$ 25	\$ 50
Nursing	OR Room #5	Airgas	Medical Air	Facilities	New	2	\$ 25	\$ 50
Nursing	OR Room #5	Carl Zeiss	Insufflator, CO2	Medical Equipment	New	1	\$ 16,000	\$ 16,000
Nursing	OR Room #5	Pamero Health - WH290 - 109	Holder, Oxiver	Environmental Service	New	1	\$ 34	\$ 34
Nursing	OR Room #5	Alimed	Holder, Lead Apron, Wall Mounted	Medical Equipment	New	1	\$ 425	\$ 425
Nursing	OR Room #5	Medline - MDS192094U	Holder, Glove, 4 Slot	Environmental Service	New	1	\$ 50	\$ 50
Nursing	OR Room #5	Universal Medical	Hamper, Trash, Metal, Slim Jim (anesthesia)	Environmental Service	New	1	\$ 100	\$ 100
Nursing	OR Room #5		Hamper, Trash, Metal, Slim Jim	Environmental Service	New	2	\$ 100	\$ 200
Nursing	OR Room #5	Universal Medical	Hamper, Linen, Soiled, Metal W/Step-on Pedal & Lid	Environmental Service	New	1	\$ 650	\$ 650
Nursing	OR Room #5	Medline	Container, Sharp, On Anesthesia Cart - 3 gallon	Medical Equipment	New	1	\$ 125	\$ 125
Nursing	OR Room #5	CME - Large 12 gallon container with cart	Container, Sharp, Floor w/foot pedal opening	Environmental Service	New	1	\$ 800	\$ 800
Nursing	OR Room #5	Medline	Container, Sharp, Floor w/foot pedal opening	Medical Equipment	New	1	\$ 800	\$ 800
Nursing	OR Room #5	Office Environments	Chairs, Task, w/o Arms	Furnishings/Equip	New	2	\$ 700	\$ 1,400
Nursing	OR Room #5	Office Environments	Chair, Task, Stool, w/o Arms	Furnishings/Equip	New	1	\$ 1,079	\$ 1,079
Nursing	OR Room #5	Medtronic	Cart, Electrosurgery Unit, W/Baskets	Medical Equipment	New	1	\$ 17,000	\$ 17,000
Nursing	OR Room #5	Metro	Cart, Case, Enclosed, Surgical 48" 48" C-241823	Medical Equipment	New	1	\$ 3,500	\$ 3,500
Nursing	OR Room #5	Metro	Cart, Case, Enclosed, Surgical 36" shelf C-241822	Medical Equipment	New	1	\$ 3,500	\$ 3,500
Nursing	OR Room #5	Philips	Capsule neruon	Medical Equipment	New	1	\$ 4,000	\$ 4,000
Nursing	OR Room #5	Global Industrial	Caddy, Suture, Surgical	Medical Equipment	New	1	\$ 1,150	\$ 1,150
Nursing	OR Room #5	CME Corp	Bucket, Kick	Medical Equipment	New	1	\$ 325	\$ 325
Nursing	OR Room #5	Ergonomic Safety Solutions	Board, Transfer	Medical Equipment	New	1	\$ 650	\$ 650
Nursing	OR Room #5	Infab	Apron, Lead, Xtra-Large	Medical Equipment	New	1	\$ 475	\$ 475
Nursing	OR Room #5	Infab	Apron, Lead, Small	Medical Equipment	New	1	\$ 475	\$ 475
Nursing	OR Room #5	Infab	Apron, Lead, Medium	Medical Equipment	New	1	\$ 475	\$ 475
Nursing	OR Room #5	Infab	Apron, Lead, Large	Medical Equipment	New	1	\$ 475	\$ 475
Nursing	OR Room #5	Universal Medical or CME	Anesthesia Stand, Spinal, W/Drawers	Medical Equipment	New	1	\$ 800	\$ 800
Nursing	OR Room #6	Infab	Thyroid shield	Medical Equipment	New	1	\$ 150	\$ 150
Nursing	OR Room #6	Skytron 3603	Table, Surgical, General	Medical Equipment	New	1	\$ 56,000	\$ 56,000
Nursing	OR Room #6	Stryker	Stryker Core Console	Medical Equipment	New	1	\$ 17,000	\$ 17,000
Nursing	OR Room #6	Stryker	Stool, Stryker w/brake & hydraulic pump	Furnishings/Equip	New	2	\$ 1,500	\$ 3,000
Nursing	OR Room #6	Pedigo	Stool, Step	Medical Equipment	New	4	\$ 250	\$ 1,000
Nursing	OR Room #6	Office Environments	Stool, Anesthetist, W/Posture Back & Footrest	Furnishings/Equip	New	1	\$ 500	\$ 500
Nursing	OR Room #6	Universal Medical	Stand, Ring	Medical Equipment	New	2	\$ 450	\$ 900
Nursing	OR Room #6	Universal Medical or CME	Stand, Prep, No Drawer	Medical Equipment	New	1	\$ 525	\$ 525
Nursing	OR Room #6	Medline	Stand, IV pole, Multi-Instrument W/6-legs	Medical Equipment	New	2	\$ 350	\$ 700
Nursing	OR Room #6	Stryker	Sink, Cactus, Wall Mount Narcotics disposal	Medical Equipment	New	1	\$ 500	\$ 500
Nursing	OR Room #6	Massimo	Sedation root monitor	Medical Equipment	New	1	\$ 5,500	\$ 5,500
Nursing	OR Room #6	Allen Medical	Seat Belt	Medical Equipment	New	2	\$ 300	\$ 600
Nursing	OR Room #6	Follett REF2, Mediclick, 90126	Refrigerator, Medicaion, Needs Temptrack	Medical Equipment	New	1	\$ 1,600	\$ 1,600
Nursing	OR Room #6	Grainger, 4UAU5	Recycle, 28-Quart	Environmental Service	New	2	\$ 15	\$ 30

Clinical	Area	Venor	Description	Category	Condition	Qty	Unit Price	Extended
Nursing	OR Room #6	Grainger	Recycle - Metal Slim Jim	Environmental Service	New	2	\$ 125	\$ 250
Nursing	OR Room #6	B Braun	Pump, Syringe	Medical Equipment	New	2	\$ 3,000	\$ 6,000
Nursing	OR Room #6	Belmont	Pump, Rapid Infuser	Medical Equipment	New	1	\$ 30,000	\$ 30,000
Nursing	OR Room #6	TBD	Pump, IV	Medical Equipment	New	2	\$ 3,000	\$ 6,000
Nursing	OR Room #6	Mercury Medical	Power Strips	Facilities	New	2	\$ 200	\$ 400
Nursing	OR Room #6	Skytron	OR booms set up including 2 lights, 2 displays, anes b	Medical Equipment	New	1	\$ 154,007	\$ 154,007
Nursing	OR Room #6		Medical Vacuum Regulator	Medical Equipment	New	2	\$ 300	\$ 600
Nursing	OR Room #6	Airgas	Medical O2	Facilities	New	2	\$ 25	\$ 50
Nursing	OR Room #6	Airgas	Medical Air	Facilities	New	2	\$ 25	\$ 50
Nursing	OR Room #6		Mayo stand large 20 x 25	Medical Equipment	New	2	\$ 850	\$ 1,700
Nursing	OR Room #6	Carl Zeiss	Insufflator, CO2	Medical Equipment	New	1	\$ 16,000	\$ 16,000
Nursing	OR Room #6	Pamero Health - WH290 - 109	Holder, Oxiver	Environmental Service	New	1	\$ 34	\$ 34
Nursing	OR Room #6	Alimed	Holder, Lead Apron, Wall Mounted	Medical Equipment	New	1	\$ 425	\$ 425
Nursing	OR Room #6	Medline - MDS192094U	Holder, Glove, 4 Slot	Environmental Service	New	1	\$ 50	\$ 50
Nursing	OR Room #6	Universal Medical	Hamper, Trash, Metal, Slim Jim (anesthesia)	Environmental Service	New	1	\$ 100	\$ 100
Nursing	OR Room #6		Hamper, Trash, Metal, Slim Jim	Environmental Service	New	2	\$ 100	\$ 200
Nursing	OR Room #6	Universal Medical	Hamper, Linen, Soiled, Metal W/Step-on Pedal & Lid	Environmental Service	New	1	\$ 650	\$ 650
Nursing	OR Room #6	Impact Fire, 2.5 Gal Water Mist	Fire Extinguisher, Water	Facilities	New	1	\$ 250	\$ 250
Nursing	OR Room #6	Medline	Container, Sharp, On Anesthesia Cart - 3 gallon	Medical Equipment	New	1	\$ 125	\$ 125
Nursing	OR Room #6	CME - Large 12 gallon container with cart	Container, Sharp, Floor w/foot pedal opening	Environmental Service	New	1	\$ 800	\$ 800
Nursing	OR Room #6	Medline	Container, Sharp, Floor w/foot pedal opening	Medical Equipment	New	1	\$ 800	\$ 800
Nursing	OR Room #6	Office Environments	Chairs, Task, w/o Arms	Furnishings/Equip	New	2	\$ 700	\$ 1,400
Nursing	OR Room #6	Office Environments	Chair, Task, Stool, w/o Arms	Furnishings/Equip	New	1	\$ 1,079	\$ 1,079
Nursing	OR Room #6	Medtronic	Cart, Electrosurgery Unit, W/Baskets	Medical Equipment	New	1	\$ 17,000	\$ 17,000
Nursing	OR Room #6	Metro	Cart, Case, Enclosed, Surgical 48" 48" C-241823	Medical Equipment	New	1	\$ 3,500	\$ 3,500
Nursing	OR Room #6	Metro	Cart, Case, Enclosed, Surgical 36" shelf C-241822	Medical Equipment	New	1	\$ 3,500	\$ 3,500
Nursing	OR Room #6	Philips	Capsule neruon	Medical Equipment	New	1	\$ 4,000	\$ 4,000
Nursing	OR Room #6	Global Industrial	Caddy, Suture, Surgical	Medical Equipment	New	1	\$ 1,150	\$ 1,150
Nursing	OR Room #6	CME Corp	Bucket, Kick	Medical Equipment	New	1	\$ 325	\$ 325
Nursing	OR Room #6	Ergonomic Safety Solutions	Board, Transfer	Medical Equipment	New	1	\$ 650	\$ 650
Nursing	OR Room #6	Infab	Apron, Lead, Xtra-Large	Medical Equipment	New	1	\$ 475	\$ 475
Nursing	OR Room #6	Infab	Apron, Lead, Small	Medical Equipment	New	1	\$ 475	\$ 475
Nursing	OR Room #6	Infab	Apron, Lead, Medium	Medical Equipment	New	1	\$ 475	\$ 475
Nursing	OR Room #6	Infab	Apron, Lead, Large	Medical Equipment	New	1	\$ 475	\$ 475
Nursing	OR Room #6	Universal Medical or CME	Anesthesia Stand, Spinal, W/Drawers	Medical Equipment	New	1	\$ 800	\$ 800
Nursing	OR Room #6	Draeger	Anesthesia Machine, w vaporizer	Medical Equipment	New	1	\$ 65,000	\$ 65,000
Nursing	OR Room #7	Infab	Thyroid shield	Medical Equipment	New	1	\$ 150	\$ 150
Nursing	OR Room #7	Skytron 3603	Table, Surgical, General	Medical Equipment	New	1	\$ 56,000	\$ 56,000
Nursing	OR Room #7	Stryker	Stryker Core Console	Medical Equipment	New	1	\$ 17,000	\$ 17,000
Nursing	OR Room #7	Stryker	Stool, Stryker w/brake & hydraulic pump	Furnishings/Equip	New	2	\$ 1,500	\$ 3,000
Nursing	OR Room #7	Pedigo	Stool, Step	Medical Equipment	New	4	\$ 250	\$ 1,000
Nursing	OR Room #7	Office Environments	Stool, Anesthetist, W/Posture Back & Footrest	Medical Equipment	New	1	\$ 500	\$ 500
Nursing	OR Room #7	Universal Medical	Stand, Ring	Medical Equipment	New	2	\$ 450	\$ 900
Nursing	OR Room #7	Universal Medical or CME	Stand, Prep, No Drawer	Medical Equipment	New	1	\$ 525	\$ 525

Clinical	Area	Venor	Description	Category	Condition	Qty	Unit Price	Extended
Nursing	OR Room #7	Medline	Stand, IV pole, Multi-Instrument W/6-legs	Medical Equipment	New	2	\$ 350	\$ 700
Nursing	OR Room #7	Stryker	Sink, Cactus, Wall Mount Narcotics disposal	Medical Equipment	New	1	\$ 500	\$ 500
Nursing	OR Room #7	Massimo	Sedation root monitor	Medical Equipment	New	1	\$ 5,500	\$ 5,500
Nursing	OR Room #7	Allen Medical	Seat Belt	Medical Equipment	New	2	\$ 300	\$ 600
Nursing	OR Room #7	Follett REF2, Mediclick, 90126	Refrigerator, Medicaion, Needs Temptrack	Medical Equipment	New	1	\$ 1,600	\$ 1,600
Nursing	OR Room #7	Grainger, 4UAU5	Recycle, 28-Quart	Environmental Service	New	2	\$ 15	\$ 30
Nursing	OR Room #7	Grainger	Recycle - Metal Slim Jim	Environmental Service	New	2	\$ 125	\$ 250
Nursing	OR Room #7	B Braun	Pump, Syringe	Medical Equipment	New	2	\$ 3,000	\$ 6,000
Nursing	OR Room #7	Belmont	Pump, Rapid Infuser	Medical Equipment	New	1	\$ 30,000	\$ 30,000
Nursing	OR Room #7	TBD	Pump, IV	Medical Equipment	New	2	\$ 3,000	\$ 6,000
Nursing	OR Room #7	Mercury Medical	Power Strips	Facilities	New	2	\$ 200	\$ 400
Nursing	OR Room #7	Skytron	OR booms set up including 2 lights, 2 displays, anes b	Medical Equipment	New	1	\$ 154,007	\$ 154,007
Nursing	OR Room #7		Medical Vacuum Regulator	Medical Equipment	New	2	\$ 300	\$ 600
Nursing	OR Room #7	Airgas	Medical O2	Facilities	New	2	\$ 25	\$ 50
Nursing	OR Room #7	Airgas	Medical Air	Facilities	New	2	\$ 25	\$ 50
Nursing	OR Room #7		Mayo stand large 20 x 25	Medical Equipment	New	2	\$ 850	\$ 1,700
Nursing	OR Room #7	Carl Zeiss	Insufflator, CO2	Medical Equipment	New	1	\$ 16,000	\$ 16,000
Nursing	OR Room #7	Pamero Health - WH290 - 109	Holder, Oxiver	Environmental Service	New	1	\$ 34	\$ 34
Nursing	OR Room #7	Alimed	Holder, Lead Apron, Wall Mounted	Medical Equipment	New	1	\$ 425	\$ 425
Nursing	OR Room #7	Medline - MDS192094U	Holder, Glove, 4 Slot	Environmental Service	New	1	\$ 50	\$ 50
Nursing	OR Room #7	Universal Medical	Hamper, Trash, Metal, Slim Jim (anesthesia)	Environmental Service	New	1	\$ 100	\$ 100
Nursing	OR Room #7		Hamper, Trash, Metal, Slim Jim	Environmental Service	New	2	\$ 100	\$ 200
Nursing	OR Room #7	Universal Medical	Hamper, Linen, Soiled, Metal W/Step-on Pedal & Lid	Environmental Service	New	1	\$ 650	\$ 650
Nursing	OR Room #7	Impact Fire, 2.5 Gal Water Mist	Fire Extinguisher, Water	Facilities	New	1	\$ 250	\$ 250
Nursing	OR Room #7	Medline	Container, Sharp, On Anesthesia Cart - 3 gallon	Medical Equipment	New	1	\$ 125	\$ 125
Nursing	OR Room #7	CME - Large 12 gallon container with cart	Container, Sharp, Floor w/foot pedal opening	Environmental Service	New	1	\$ 800	\$ 800
Nursing	OR Room #7	Medline	Container, Sharp, Floor w/foot pedal opening	Medical Equipment	New	1	\$ 800	\$ 800
Nursing	OR Room #7	Office Environments	Chairs, Task, w/o Arms	Furnishings/Equip	New	2	\$ 700	\$ 1,400
Nursing	OR Room #7	Office Environments	Chair, Task, Stool, w/o Arms	Furnishings/Equip	New	1	\$ 1,079	\$ 1,079
Nursing	OR Room #7	Medtronic	Cart, Electrosurgery Unit, W/Baskets	Medical Equipment	New	1	\$ 17,000	\$ 17,000
Nursing	OR Room #7	Metro	Cart, Case, Enclosed, Surgical 48" 48" C-241823	Medical Equipment	New	1	\$ 3,500	\$ 3,500
Nursing	OR Room #7	Metro	Cart, Case, Enclosed, Surgical 36" shelf C-241822	Medical Equipment	New	1	\$ 3,500	\$ 3,500
Nursing	OR Room #7	Philips	Capsule neruon	Medical Equipment	New	1	\$ 4,000	\$ 4,000
Nursing	OR Room #7	Global Industrial	Caddy, Suture, Surgical	Medical Equipment	New	1	\$ 1,150	\$ 1,150
Nursing	OR Room #7	CME Corp	Bucket, Kick	Medical Equipment	New	1	\$ 325	\$ 325
Nursing	OR Room #7	Ergonomic Safety Solutions	Board, Transfer	Medical Equipment	New	1	\$ 650	\$ 650
Nursing	OR Room #7	Infab	Apron, Lead, Xtra-Large	Medical Equipment	New	1	\$ 475	\$ 475
Nursing	OR Room #7	Infab	Apron, Lead, Small	Medical Equipment	New	1	\$ 475	\$ 475
Nursing	OR Room #7	Infab	Apron, Lead, Medium	Medical Equipment	New	1	\$ 475	\$ 475
Nursing	OR Room #7	Infab	Apron, Lead, Large	Medical Equipment	New	1	\$ 475	\$ 475
Nursing	OR Room #7	Universal Medical or CME	Anesthesia Stand, Spinal, W/Drawers	Medical Equipment	New	1	\$ 800	\$ 800
Nursing	OR Room #7	Draeger	Anesthesia Machine, w vaporizer	Medical Equipment	New	1	\$ 65,000	\$ 65,000
Nursing	OR Room #8	Infab	Thyroid shield	Medical Equipment	New	1	\$ 150	\$ 150
Nursing	OR Room #8	Skytron 3603	Table, Surgical, General	Medical Equipment	New	1	\$ 56,000	\$ 56,000

Clinical	Area	Venor	Description	Category	Condition	Qty	Unit Price	Extended
Nursing	OR Room #8	Stryker	Stryker Core Console	Medical Equipment	New	1	\$ 17,000	\$ 17,000
Nursing	OR Room #8	Stryker	Stool, Stryker w/brake & hydraulic pump	Furnishings/Equip	New	2	\$ 1,500	\$ 3,000
Nursing	OR Room #8	Pedigo	Stool, Step	Medical Equipment	New	4	\$ 250	\$ 1,000
Nursing	OR Room #8	Office Environments	Stool, Anesthetist, W/Posture Back & Footrest	Medical Equipment	New	1	\$ 500	\$ 500
Nursing	OR Room #8	Universal Medical	Stand, Ring	Medical Equipment	New	2	\$ 450	\$ 900
Nursing	OR Room #8	Universal Medical or CME	Stand, Prep, No Drawer	Medical Equipment	New	1	\$ 525	\$ 525
Nursing	OR Room #8	Medline	Stand, IV pole, Multi-Instrument W/6-legs	Medical Equipment	New	2	\$ 350	\$ 700
Nursing	OR Room #8	Stryker	Sink, Cactus, Wall Mount Narcotics disposal	Medical Equipment	New	1	\$ 500	\$ 500
Nursing	OR Room #8	Massimo	Sedation root monitor	Medical Equipment	New	1	\$ 5,500	\$ 5,500
Nursing	OR Room #8	Allen Medical	Seat Belt	Medical Equipment	New	2	\$ 300	\$ 600
Nursing	OR Room #8	Follett REF2, Mediclick, 90126	Refrigerator, Medicaion, Needs Temptrack	Medical Equipment	New	1	\$ 1,600	\$ 1,600
Nursing	OR Room #8	Grainger, 4UAU5	Recycle, 28-Quart	Environmental Service	New	2	\$ 15	\$ 30
Nursing	OR Room #8	Grainger	Recycle - Metal Slim Jim	Environmental Service	New	2	\$ 125	\$ 250
Nursing	OR Room #8	B Braun	Pump, Syringe	Medical Equipment	New	2	\$ 3,000	\$ 6,000
Nursing	OR Room #8	Belmont	Pump, Rapid Infuser	Medical Equipment	New	1	\$ 30,000	\$ 30,000
Nursing	OR Room #8	TBD	Pump, IV	Medical Equipment	New	2	\$ 3,000	\$ 6,000
Nursing	OR Room #8	Mercury Medical	Power Strips	Facilities	New	2	\$ 200	\$ 400
Nursing	OR Room #8	Skytron	OR booms set up including 2 lights, 2 displays, anes b	Medical Equipment	New	1	\$ 154,007	\$ 154,007
Nursing	OR Room #8		Medical Vacuum Regulator	Medical Equipment	New	2	\$ 300	\$ 600
Nursing	OR Room #8	Airgas	Medical O2	Facilities	New	2	\$ 25	\$ 50
Nursing	OR Room #8	Airgas	Medical Air	Facilities	New	2	\$ 25	\$ 50
Nursing	OR Room #8		Mayo stand large 20 x 25	Medical Equipment	New	2	\$ 850	\$ 1,700
Nursing	OR Room #8	Carl Zeiss	Insufflator, CO2	Medical Equipment	New	1	\$ 16,000	\$ 16,000
Nursing	OR Room #8	Pamero Health - WH290 - 109	Holder, Oxiver	Environmental Service	New	1	\$ 34	\$ 34
Nursing	OR Room #8	Alimed	Holder, Lead Apron, Wall Mounted	Medical Equipment	New	1	\$ 425	\$ 425
Nursing	OR Room #8	Medline - MDS192094U	Holder, Glove, 4 Slot	Environmental Service	New	1	\$ 50	\$ 50
Nursing	OR Room #8	Universal Medical	Hamper, Trash, Metal, Slim Jim (anesthesia)	Environmental Service	New	1	\$ 125	\$ 125
Nursing	OR Room #8		Hamper, Trash, Metal, Slim Jim	Environmental Service	New	2	\$ 100	\$ 200
Nursing	OR Room #8	Universal Medical	Hamper, Linen, Soiled, Metal W/Step-on Pedal & Lid	Environmental Service	New	1	\$ 650	\$ 650
Nursing	OR Room #8	Impact Fire, 2.5 Gal Water Mist	Fire Extinguisher, Water	Facilities	New	1	\$ 250	\$ 250
Nursing	OR Room #8	Medline	Container, Sharp, On Anesthesia Cart - 3 gallon	Medical Equipment	New	1	\$ 125	\$ 125
Nursing	OR Room #8	CME - Large 12 gallon container with cart	Container, Sharp, Floor w/foot pedal opening	Environmental Service	New	1	\$ 800	\$ 800
Nursing	OR Room #8	Medline	Container, Sharp, Floor w/foot pedal opening	Medical Equipment	New	1	\$ 300	\$ 300
Nursing	OR Room #8	Office Environments	Chairs, Task, w/o Arms	Furnishings/Equip	New	2	\$ 700	\$ 1,400
Nursing	OR Room #8	Office Environments	Chair, Task, Stool, w/o Arms	Furnishings/Equip	New	1	\$ 1,079	\$ 1,079
Nursing	OR Room #8	Medtronic	Cart, Electrosurgery Unit, W/Baskets	Medical Equipment	New	1	\$ 17,000	\$ 17,000
Nursing	OR Room #8	Metro	Cart, Case, Enclosed, Surgical 48" 48" C-241823	Medical Equipment	New	1	\$ 3,500	\$ 3,500
Nursing	OR Room #8	Metro	Cart, Case, Enclosed, Surgical 36" shelf C-241822	Medical Equipment	New	1	\$ 3,500	\$ 3,500
Nursing	OR Room #8	Philips	Capsule neruon	Medical Equipment	New	1	\$ 4,000	\$ 4,000
Nursing	OR Room #8	Global Industrial	Caddy, Suture, Surgical	Medical Equipment	New	1	\$ 1,150	\$ 1,150
Nursing	OR Room #8	CME Corp	Bucket, Kick	Medical Equipment	New	1	\$ 325	\$ 325
Nursing	OR Room #8	Ergonomic Safety Solutions	Board, Transfer	Medical Equipment	New	1	\$ 650	\$ 650
Nursing	OR Room #8	Infab	Apron, Lead, Xtra-Large	Medical Equipment	New	1	\$ 475	\$ 475
Nursing	OR Room #8	Infab	Apron, Lead, Small	Medical Equipment	New	1	\$ 475	\$ 475

Clinical	Area	Venor	Description	Category	Condition	Qty	Unit Price	Extended
Nursing	OR Room #8	Infab	Apron, Lead, Medium	Medical Equipment	New	1	\$ 475	\$ 475
Nursing	OR Room #8	Infab	Apron, Lead, Large	Medical Equipment	New	1	\$ 475	\$ 475
Nursing	OR Room #8	Universal Medical or CME	Anesthesia Stand, Spinal, W/Drawers	Medical Equipment	New	1	\$ 800	\$ 800
Nursing	OR Room #8	Draeger	Anesthesia Machine, w vaporizer	Medical Equipment	New	1	\$ 65,000	\$ 65,000
Nursing	OR Room #8	BD	Alaris Pump, Infusion, 1-Channel - (Lease	Medical Equipment	New	1	\$ 5,000	\$ 5,000
Grounds	Patio		Tables, Outdoors w/Umbrellas	Furnishings/Equip	New	7	\$ 4,000	\$ 28,000
Grounds	Patio		Garbage Containers, Outdoors	Facilities	New	6	\$ 700	\$ 4,200
Grounds	Patio		Bike Rack, Exterior	Facilities	New	2	\$ 1,500	\$ 3,000
Grounds	Patio		Bench, Outdoors	Facilities	New	6	\$ 800	\$ 4,800
Pharmacy	Pharmacy Retail		Scale, Drug	Medical Equipment	New	1	\$ 600	\$ 600
Pharmacy	Pharmacy Retail	Intro-Metro, Star Carts	Safe, Medication/Narcotics	Medical Equipment	New	1	\$ 1,000	\$ 1,000
Pharmacy	Pharmacy Retail	Folett, Full Size	Refrigerator, Commercial	Facilities	New	1	\$ 1,600	\$ 1,600
Pharmacy	Pharmacy Retail		Pamphlet Wall Mount	Furnishings/Equip	New	1	\$ 152	\$ 152
Pharmacy	Pharmacy Retail		Mat, Anti-Fatigue	Medical Equipment	New	4	\$ 125	\$ 500
Nursing	Pharmacy Retail		Hand Sanitizer Guard	Environmental Service	New	10	\$ 15	\$ 150
Pharmacy	Pharmacy Retail		File, Ped, File, File, Mobile	Furnishings/Equip	New	1	\$ 430	\$ 430
Pharmacy	Pharmacy Retail		File, Ped, Box, Box, File, Mobile	Furnishings/Equip	New	1	\$ 454	\$ 454
Pharmacy	Pharmacy Retail		Desk, 5'x30"	Furnishings/Equip	New	1	\$ 1,164	\$ 1,164
Pharmacy	Pharmacy Retail		Cylinder, Graduated	Medical Equipment	New	1	\$ 300	\$ 300
Pharmacy	Pharmacy Retail		Chairs, Task, w/Arms	Furnishings/Equip	New	5	\$ 701	\$ 3,505
Pharmacy	Pharmacy Retail		Chair, Task, w/o Arms	Medical Equipment	New	1	\$ 600	\$ 600
Pharmacy	Pharmacy Retail		Chair, Task, Stool, w/o Arms	Furnishings/Equip	New	1	\$ 1,079	\$ 1,079
Nursing	Prep Bay, Eyes		Tree, IV	Medical Equipment	New	2	\$ 50	\$ 100
Nursing	Prep Bay, Eyes	Grainger - 4PGN7	Trash, 28-Quart	Environmental Service	New	2	\$ 15	\$ 30
Nursing	Prep Bay, Eyes	GCX, M Series 8"/20.3cm Pivot Arm for PolyQuick Up	Track, IV	Medical Equipment	New	2	\$ 3,000	\$ 6,000
Nursing	Prep Bay, Eyes		Thermometer	Medical Equipment	New	2	\$ 200	\$ 400
Nursing	Prep Bay, Eyes		Table, Overbed	Environmental Service	New	2	\$ 300	\$ 600
Nursing	Prep Bay, Eyes		Sharps Container	Environmental Service	New	2	\$ 30	\$ 60
EVS	Prep Bay, Eyes		Recliner, Patient	Environmental Service	New	2	\$ 5,310	\$ 10,620
Nursing	Prep Bay, Eyes	Stryker	Mistral Air, Bear Hugger	Medical Equipment	New	2	\$ 900	\$ 1,800
Nursing	Prep Bay, Eyes		Medical Vacuum Regulator	Medical Equipment	New	2	\$ 300	\$ 600
Nursing	Prep Bay, Eyes	Airgas	Medical O2	Facilities	New	2	\$ 25	\$ 50
Nursing	Prep Bay, Eyes	Pamero Health - WH290 - 109	Holder, Oxiver	Environmental Service	New	2	\$ 34	\$ 68
Nursing	Prep Bay, Eyes	Medline - MDS192094U	Holder, Glove, 4 Slot	Environmental Service	New	2	\$ 20	\$ 40
Nursing	Prep Bay, Eyes		Hamper, Linen, Soiled	Environmental Service	New	1	\$ 100	\$ 100
EVS	Prep Bay, Eyes		Curtain, Cubicle	Environmental Service	New	4	\$ 700	\$ 2,800
Nursing	Prep Bay, Eyes		Chair, Stool, Exam	Furnishings/Equip	New	2	\$ 195	\$ 390
Nursing	Prep Bay, Eyes		Chair, Guest, Patient	Furnishings/Equip	New	2	\$ 210	\$ 420
Nursing	Prep Bay, Eyes		Chair, Patient, Recliner	Furnishings/Equip	New	2	\$ 5,310	\$ 10,620
Nursing	Prep Bay, Eyes		Bracket, Canister, Vacuum	Medical Equipment	New	2	\$ 8	\$ 16
Nursing	Prep Bay, Eyes		Blood Pressure, Manual, w/Basket	Medical Equipment	New	2	\$ 150	\$ 300
Nursing	Prep Bays		Tree, IV	Medical Equipment	New	10	\$ 50	\$ 500
Nursing	Prep Bays	Grainger - 4PGN7	Trash, 28-Quart	Environmental Service	New	10	\$ 15	\$ 150
Nursing	Prep Bays	GCX, M Series 8"/20.3cm Pivot Arm for PolyQuick Up	Track, IV	Medical Equipment	New	10	\$ 3,000	\$ 30,000

Clinical	Area	Venor	Description	Category	Condition	Qty	Unit Price	Extended
Nursing	Prep Bays		Thermometer	Medical Equipment	New	10	\$ 200	\$ 2,000
Nursing	Prep Bays		Table, Overbed	Environmental Service	New	10	\$ 300	\$ 3,000
Nursing	Prep Bays		Stretcher	Medical Equipment	New	10	\$ 10,000	\$ 100,000
Nursing	Prep Bays		Sharps Container	Environmental Service	New	10	\$ 30	\$ 300
Nursing	Prep Bays	Stryker	Mistral Air, Bear Hugger	Medical Equipment	New	10	\$ 900	\$ 9,000
Nursing	Prep Bays		Medical Vacuum Regulator	Medical Equipment	New	10	\$ 300	\$ 3,000
Nursing	Prep Bays	Airgas	Medical O2	Facilities	New	10	\$ 25	\$ 250
Nursing	Prep Bays	Pamero Health - WH290 - 109	Holder, Oxiver	Environmental Service	New	10	\$ 34	\$ 340
Nursing	Prep Bays	Medline - MDS192094U	Holder, Glove, 4 Slot	Environmental Service	New	10	\$ 20	\$ 200
Nursing	Prep Bays		Hamper, Linen, Soiled	Environmental Service	New	10	\$ 100	\$ 1,000
EVS	Prep Bays		Curtain, Cubicle	Environmental Service	New	10	\$ 700	\$ 7,000
Nursing	Prep Bays		Chair, Stool, Exam	Furnishings/Equip	New	10	\$ 195	\$ 1,950
Nursing	Prep Bays		Chair, Guest, Patient	Furnishings/Equip	New	18	\$ 210	\$ 3,780
Nursing	Prep Bays		Chair, Guest, Bariatric	Furnishings/Equip	New	2	\$ 300	\$ 600
Nursing	Prep Bays		Bracket, Canister, Vacuum	Medical Equipment	New	10	\$ 8	\$ 80
Nursing	Prep Bays		Blood Pressure, Manual, w/Basket	Medical Equipment	New	10	\$ 150	\$ 1,500
Nursing	Recovery 23-Hour, Rooms	Grainger - 4PGN7	Trash, 28-Quart	Environmental Service	New	8	\$ 15	\$ 120
Nursing	Recovery 23-Hour, Rooms		Thermometer	Medical Equipment	New	8	\$ 200	\$ 1,600
Nursing	Recovery 23-Hour, Rooms		Table, Overbed	Environmental Service	New	8	\$ 300	\$ 2,400
Nursing	Recovery 23-Hour, Rooms		Sharps Container	Environmental Service	New	8	\$ 30	\$ 240
Nursing	Recovery 23-Hour, Rooms	Grainger, 4UUA5	Recycle, 28-Quart	Environmental Service	New	8	\$ 15	\$ 120
Nursing	Recovery 23-Hour, Rooms		Chair, Patient, Recliner	Furnishings/Equip	New	8	\$ 4,600	\$ 36,800
Nursing	Recovery 23-Hour, Rooms		PDI Television	Facilities	New	8	\$ 1,000	\$ 8,000
Nursing	Recovery 23-Hour, Rooms	Stryker	Mistral Air, Bear Hugger	Medical Equipment	New	8	\$ 900	\$ 7,200
Nursing	Recovery 23-Hour, Rooms		Medical Vacuum Regulator	Medical Equipment	New	8	\$ 300	\$ 2,400
Nursing	Recovery 23-Hour, Rooms	Airgas	Medical O2	Facilities	New	16	\$ 25	\$ 400
Nursing	Recovery 23-Hour, Rooms	Airgas	Medical Air	Facilities	New	8	\$ 25	\$ 200
Nursing	Recovery 23-Hour, Rooms	Pamero Health - WH290 - 109	Holder, Oxiver	Environmental Service	New	8	\$ 34	\$ 272
Nursing	Recovery 23-Hour, Rooms	Medline - MDS192094U	Holder, Glove, 4 Slot	Environmental Service	New	8	\$ 20	\$ 160
Nursing	Recovery 23-Hour, Rooms		Hand Sanitizer Guard	Environmental Service	New	8	\$ 15	\$ 120
Nursing	Recovery 23-Hour, Rooms		Hamper, Linen, Soiled	Environmental Service	New	8	\$ 100	\$ 800
Nursing	Recovery 23-Hour, Rooms		Emesis bag holder	Facilities	New	8	\$ 10	\$ 80
EVS	Recovery 23-Hour, Rooms		Curtain, Cubicle	Environmental Service	New	8	\$ 700	\$ 5,600
Nursing	Recovery 23-Hour, Rooms		Chair, Stool, Exam	Furnishings/Equip	New	8	\$ 195	\$ 1,560
Nursing	Recovery 23-Hour, Rooms		Chair, Guest, Patient	Furnishings/Equip	New	6	\$ 393	\$ 2,358
Nursing	Recovery 23-Hour, Rooms		Chair, Guest, Bariatric	Furnishings/Equip	New	2	\$ 651	\$ 1,302
Nursing	Recovery 23-Hour, Rooms		Cabinet, Bedside	Furnishings/Equip	New	8	\$ 940	\$ 7,520
Nursing	Recovery 23-Hour, Rooms		Bracket, Canister, Vacuum	Medical Equipment	New	8	\$ 8	\$ 64
Nursing	Recovery 23-Hour, Rooms		Bed, 37-Pin Breakaway Cord	Facilities	New	8	\$ 8,000	\$ 64,000
Nursing	Recovery Phase 1, Bays		Tree, IV	Medical Equipment	New	13	\$ 30	\$ 390
Nursing	Recovery Phase 1, Bays	Grainger - 4PGN7	Trash, 28-Quart	Environmental Service	New	13	\$ 15	\$ 195
Nursing	Recovery Phase 1, Bays	GCX, M Series 8"/20.3cm Pivot Arm for PolyQuick Up	Track, IV	Medical Equipment	New	13	\$ 3,000	\$ 39,000
Nursing	Recovery Phase 1, Bays		Thermometer	Medical Equipment	New	13	\$ 200	\$ 2,600
Nursing	Recovery Phase 1, Bays		Table, Overbed	Furnishings/Equip	New	8	\$ 300	\$ 2,400

Clinical	Area	Venor	Description	Category	Condition	Qty	Unit Price	Extended
Nursing	Recovery Phase 1, Bays		Sharps Container	Environmental Service	New	13	\$ 30	\$ 390
Nursing	Recovery Phase 1, Bays	Grainger, 4UAU5	Recycle, 28-Quart	Environmental Service	New	13	\$ 15	\$ 195
Nursing	Recovery Phase 1, Bays	Stryker	Mistral Air, Bear Hugger	Medical Equipment	New	6	\$ 900	\$ 5,400
Nursing	Recovery Phase 1, Bays		Medical Vacuum Regulator	Medical Equipment	New	13	\$ 300	\$ 3,900
Nursing	Recovery Phase 1, Bays	Airgas	Medical O2	Facilities	New	26	\$ 25	\$ 650
Nursing	Recovery Phase 1, Bays	Airgas	Medical Air	Facilities	New	13	\$ 25	\$ 325
Nursing	Recovery Phase 1, Bays	Pamero Health - WH290 - 109	Holder, Oxiver	Environmental Service	New	13	\$ 34	\$ 442
Nursing	Recovery Phase 1, Bays	Medline - MDS192094U	Holder, Glove, 4 Slot	Environmental Service	New	13	\$ 20	\$ 260
Nursing	Recovery Phase 1, Bays		Hand Sanitizer Guard	Environmental Service	New	13	\$ 15	\$ 195
Nursing	Recovery Phase 1, Bays		Hamper, Linen, Soiled	Environmental Service	New	14	\$ 100	\$ 1,400
Nursing	Recovery Phase 1, Bays		Emesis bag holder	Facilities	New	13	\$ 10	\$ 130
Nursing	Recovery Phase 1, Bays		Curtain, Cubicle	Environmental Service	New	14	\$ 700	\$ 9,800
Nursing	Recovery Phase 1, Bays		Chair, Task, Stool, w/o Arms	Furnishings/Equip	New	5	\$ 725	\$ 3,625
Nursing	Recovery Phase 1, Bays		Chair, Stool, Exam, w/Back	Furnishings/Equip	New	2	\$ 287	\$ 574
Nursing	Recovery Phase 1, Bays		Chair, Stool, Exam	Furnishings/Equip	New	2	\$ 195	\$ 390
Nursing	Recovery Phase 1, Bays	Stance	Chair, Guest, Patient	Furnishings/Equip	New	25	\$ 393	\$ 9,825
Nursing	Recovery Phase 1, Bays	Stance	Chair, Guest, Bariatric	Furnishings/Equip	New	3	\$ 651	\$ 1,953
Nursing	Recovery Phase 1, Bays		Bracket, Monitor, Wall Mounted	Facilities	New	14	\$ 75	\$ 1,050
Nursing	Recovery Phase 1, Bays		Bracket, Canister, Vacuum	Medical Equipment	New	13	\$ 8	\$ 104
Nursing	Recovery Phase 1, Isolation		Tree, IV	Medical Equipment	New	1	\$ 30	\$ 30
Nursing	Recovery Phase 1, Isolation	Grainger - 4PGN7	Trash, 28-Quart	Environmental Service	New	1	\$ 15	\$ 15
Nursing	Recovery Phase 1, Isolation	GCX, M Series 8"/20.3cm Pivot Arm for PolyQuick Up	Track, IV	Medical Equipment	New	1	\$ 3,000	\$ 3,000
Nursing	Recovery Phase 1, Isolation		Thermometer	Medical Equipment	New	1	\$ 200	\$ 200
Nursing	Recovery Phase 1, Isolation		Table, Overbed	Furnishings/Equip	New	1	\$ 300	\$ 300
Nursing	Recovery Phase 1, Isolation		Sharps Container	Environmental Service	New	1	\$ 30	\$ 30
Nursing	Recovery Phase 1, Isolation	Grainger, 4UAU5	Recycle, 28-Quart	Environmental Service	New	1	\$ 15	\$ 15
Nursing	Recovery Phase 1, Isolation		Medical Vacuum Regulator	Medical Equipment	New	1	\$ 300	\$ 300
Nursing	Recovery Phase 1, Isolation	Airgas	Medical O2	Facilities	New	2	\$ 25	\$ 50
Nursing	Recovery Phase 1, Isolation	Airgas	Medical Air	Facilities	New	1	\$ 25	\$ 25
Nursing	Recovery Phase 1, Isolation	Pamero Health - WH290 - 109	Holder, Oxiver	Environmental Service	New	1	\$ 34	\$ 34
Nursing	Recovery Phase 1, Isolation	Medline - MDS192094U	Holder, Glove, 4 Slot	Environmental Service	New	1	\$ 20	\$ 20
Nursing	Recovery Phase 1, Isolation		Hand Sanitizer Guard	Environmental Service	New	1	\$ 15	\$ 15
Nursing	Recovery Phase 1, Isolation		Hamper, Linen, Soiled	Environmental Service	New	1	\$ 100	\$ 100
Nursing	Recovery Phase 1, Isolation		Emesis bag holder	Facilities	New	1	\$ 10	\$ 10
Nursing	Recovery Phase 1, Isolation		Curtain, Cubicle	Environmental Service	New	1	\$ 700	\$ 700
Nursing	Recovery Phase 1, Isolation		Chair, Stool, Exam, w/Back	Furnishings/Equip	New	1	\$ 287	\$ 287
Nursing	Recovery Phase 1, Isolation	Stance	Chair, Guest, Patient	Furnishings/Equip	New	1	\$ 210	\$ 210
Nursing	Recovery Phase 1, Isolation		Bracket, Monitor, Wall Mounted	Facilities	New	1	\$ 75	\$ 75
Nursing	Recovery Phase 1, Isolation		Bracket, Canister, Vacuum	Medical Equipment	New	1	\$ 8	\$ 8
Nursing	Recovery Phase 2, Bays	Grainger - 4PGN7	Trash, 28-Quart	Environmental Service	New	10	\$ 15	\$ 150
Nursing	Recovery Phase 2, Bays	GCX, M Series 8"/20.3cm Pivot Arm for PolyQuick Up	Track, IV	Medical Equipment	New	10	\$ 3,000	\$ 30,000
Nursing	Recovery Phase 2, Bays		Thermometer	Medical Equipment	New	10	\$ 200	\$ 2,000
Nursing	Recovery Phase 2, Bays		Table, Overbed	Furnishings/Equip	New	10	\$ 300	\$ 3,000
Nursing	Recovery Phase 2, Bays		Stretcher	Medical Equipment	New	14	\$ 10,000	\$ 140,000

Clinical	Area	Venor	Description	Category	Condition	Qty	Unit Price	Extended
Nursing	Recovery Phase 2, Bays		Sharps Container	Environmental Service	New	10	\$ 30	\$ 300
Nursing	Recovery Phase 2, Bays		Rehab Stairs	Medical Equipment	New	1	\$ 1,000	\$ 1,000
Nursing	Recovery Phase 2, Bays	Grainger, 4UAU5	Recycle, 28-Quart	Environmental Service	New	10	\$ 15	\$ 150
Nursing	Recovery Phase 2, Bays		Chair, Patient, Recliner	Furnishings/Equip	New	4	\$ 5,310	\$ 21,240
Nursing	Recovery Phase 2, Bays		Pole, IV, Rolling	Medical Equipment	New	4	\$ 250	\$ 1,000
Nursing	Recovery Phase 2, Bays		PDI Television	Facilities	New	10	\$ 1,000	\$ 10,000
Nursing	Recovery Phase 2, Bays	Stryker	Mistral Air, Bear Hugger	Medical Equipment	New	10	\$ 900	\$ 9,000
Nursing	Recovery Phase 2, Bays		Medical Vacuum Regulator	Medical Equipment	New	10	\$ 300	\$ 3,000
Nursing	Recovery Phase 2, Bays	Airgas	Medical O2	Medical Equipment	New	20	\$ 25	\$ 500
Nursing	Recovery Phase 2, Bays	Airgas	Medical Air	Medical Equipment	New	10	\$ 25	\$ 250
Nursing	Recovery Phase 2, Bays	Pamero Health - WH290 - 109	Holder, Oxiver	Environmental Service	New	10	\$ 34	\$ 340
Nursing	Recovery Phase 2, Bays	Medline - MDS192094U	Holder, Glove, 4 Slot	Environmental Service	New	10	\$ 20	\$ 200
Nursing	Recovery Phase 2, Bays		Hand Sanitizer Guard	Environmental Service	New	10	\$ 15	\$ 150
Nursing	Recovery Phase 2, Bays		Hamper, Linen, Soiled	Environmental Service	New	10	\$ 100	\$ 1,000
Nursing	Recovery Phase 2, Bays		Emesis bag holder	Facilities	New	10	\$ 10	\$ 100
Nursing	Recovery Phase 2, Bays		Curtain, Cubicle	Environmental Service	New	10	\$ 700	\$ 7,000
Nursing	Recovery Phase 2, Bays		Chair, Task, Stool, w/o Arms	Furnishings/Equip	New	5	\$ 725	\$ 3,625
Nursing	Recovery Phase 2, Bays		Chair, Stool, Exam	Furnishings/Equip	New	8	\$ 400	\$ 3,200
Nursing	Recovery Phase 2, Bays		Chair, Guest, Bariatric	Furnishings/Equip	New	5	\$ 300	\$ 1,500
Nursing	Recovery Phase 2, Bays		Bracket, Monitor, Wall Mounted	Facilities	New	10	\$ 75	\$ 750
Nursing	Recovery Phase 2, Bays		Bracket, Canister, Vacuum	Medical Equipment	New	10	\$ 8	\$ 80
Nursing	Recovery Phase 2, Bays		Blood Pressure, Dynamap, w/Basket, On Wheels	Medical Equipment	New	4	\$ 300	\$ 1,200
Nursing	Recovery Phase 2, Eye Bays	Grainger - 4PGN7	Trash, 28-Quart	Environmental Service	New	4	\$ 15	\$ 60
Nursing	Recovery Phase 2, Eye Bays	GCX, M Series 8"/20.3cm Pivot Arm for PolyQuick Up	Track, IV	Medical Equipment	New	4	\$ 3,000	\$ 12,000
Nursing	Recovery Phase 2, Eye Bays		Thermometer	Medical Equipment	New	4	\$ 200	\$ 800
Nursing	Recovery Phase 2, Eye Bays		Table, Overbed	Furnishings/Equip	New	2	\$ 300	\$ 600
Nursing	Recovery Phase 2, Eye Bays		Sharps Container	Environmental Service	New	4	\$ 30	\$ 120
Nursing	Recovery Phase 2, Eye Bays	Grainger, 4UAU5	Recycle, 28-Quart	Environmental Service	New	4	\$ 15	\$ 60
Nursing	Recovery Phase 2, Eye Bays		Chair, Patient, Recliner	Furnishings/Equip	New	4	\$ 5,310	\$ 21,240
Nursing	Recovery Phase 2, Eye Bays		Pole, IV, Rolling	Medical Equipment	New	2	\$ 250	\$ 500
Nursing	Recovery Phase 2, Eye Bays	Stryker	Mistral Air, Bear Hugger	Medical Equipment	New	4	\$ 900	\$ 3,600
Nursing	Recovery Phase 2, Eye Bays		Medical Vacuum Regulator	Medical Equipment	New	4	\$ 300	\$ 1,200
Nursing	Recovery Phase 2, Eye Bays	Airgas	Medical O2	Medical Equipment	New	8	\$ 25	\$ 200
Nursing	Recovery Phase 2, Eye Bays	Airgas	Medical Air	Medical Equipment	New	4	\$ 25	\$ 100
Nursing	Recovery Phase 2, Eye Bays	Pamero Health - WH290 - 109	Holder, Oxiver	Environmental Service	New	2	\$ 34	\$ 68
Nursing	Recovery Phase 2, Eye Bays	Medline - MDS192094U	Holder, Glove, 4 Slot	Environmental Service	New	4	\$ 20	\$ 80
Nursing	Recovery Phase 2, Eye Bays		Hand Sanitizer Guard	Environmental Service	New	4	\$ 15	\$ 60
Nursing	Recovery Phase 2, Eye Bays		Hamper, Linen, Soiled	Environmental Service	New	2	\$ 100	\$ 200
Nursing	Recovery Phase 2, Eye Bays		Emesis bag holder	Facilities	New	4	\$ 10	\$ 40
Nursing	Recovery Phase 2, Eye Bays		Curtain, Cubicle	Environmental Service	New	4	\$ 700	\$ 2,800
Nursing	Recovery Phase 2, Eye Bays		Chair, Stool, Exam	Furnishings/Equip	New	2	\$ 400	\$ 800
Nursing	Recovery Phase 2, Eye Bays		Bracket, Monitor, Wall Mounted	Facilities	New	4	\$ 75	\$ 300
Nursing	Recovery Phase 2, Eye Bays		Bracket, Canister, Vacuum	Medical Equipment	New	4	\$ 8	\$ 32
Nursing	Scrub Area	Grainger - 4PGU8	Trash, 23 Gallon	Environmental Service	New	8	\$ 80	\$ 640

Clinical	Area	Venor	Description	Category	Condition	Qty	Unit Price	Extended
Nursing	Scrub Area		Holder, sponge	Environmental Service	New	8	\$ 25	\$ 200
Nursing	Scrub Area		Holder, Soap, Purell, Surgical Scrub	Environmental Service	New	8	\$ 25	\$ 200
Nursing	Set Up Rooms		Table, Stainless Steel, w/Shelf	Medical Equipment	New	16	\$ 1,600	\$ 25,600
Nursing	Soiled Hold - OR		Waste, Drug	Environmental Service	New	1	\$ 20	\$ 20
Nursing	Soiled Hold - OR		Tote, Confidential	Environmental Service	New	1	\$ 100	\$ 100
Nursing	Soiled Hold - OR	Stericycle Recyling Program No charge for container	Sharps Container	Environmental Service	New	1	\$ 30	\$ 30
Nursing	Soiled Hold - OR	Grainger, Item #3U653	Regulate Waste, bins	Environmental Service	New	1	\$ 200	\$ 200
Nursing	Soiled Hold - OR		Label Dispenser	Medical Equipment	New	1	\$ 30	\$ 30
Nursing	Soiled Hold - OR	Pamero Health - WH290 - 109	Holder, Oxiver	Environmental Service	New	1	\$ 34	\$ 34
Nursing	Soiled Hold - OR	Medline - MDS192094U	Holder, Glove, 4 Slot	Environmental Service	New	1	\$ 20	\$ 20
Nursing	Soiled Hold - OR	Vermont Plastic	Hand Sanitizer Guard	Environmental Service	New	1	\$ 15	\$ 15
Nursing	Soiled Hold - OR		Hand Sanitizer	Environmental Service	New	14	\$ 15	\$ 210
Nursing	Soiled Hold - OR	Grainger Rubbermaid cube truck, HDPE, Black 270 C	Gondola, Linen, soiled	Environmental Service	New	1	\$ 3,500	\$ 3,500
Nursing	Soiled Utility - Prep		Waste, Drug	Environmental Service	New	1	\$ 20	\$ 20
Nursing	Soiled Utility - Prep	Stericycle Recyling Program No charge for container	Sharps Container	Environmental Service	New	1	\$ 20	\$ 20
Nursing	Soiled Utility - Prep		Label Dispenser	Medical Equipment	New	1	\$ 100	\$ 100
Nursing	Soiled Utility - Prep	Pamero Health - WH290 - 109	Holder, Oxiver	Environmental Service	New	1	\$ 34	\$ 34
Nursing	Soiled Utility - Prep	Medline - MDS192094U	Holder, Glove, 4 Slot	Environmental Service	New	1	\$ 20	\$ 20
Nursing	Soiled Utility - Recovery Phase 1	Grainger Rubbermaid cube truck, HDPE, Black 270 C	Gondola, Linen, soiled	Environmental Service	New	2	\$ 3,500	\$ 7,000
Nursing	Soiled Utility, Recovery, Phase 1		Waste, Drug	Environmental Service	New	2	\$ 20	\$ 40
Nursing	Soiled Utility, Recovery, Phase 1		Tote, Confidential	Environmental Service	New	2	\$ 100	\$ 200
Nursing	Soiled Utility, Recovery, Phase 1	Stericycle Recyling Program No charge for container	Sharps Container	Environmental Service	New	2	\$ 20	\$ 40
Nursing	Soiled Utility, Recovery, Phase 1	Grainger, Item #3U653	Regulate Waste, bins	Environmental Service	New	2	\$ 200	\$ 400
Nursing	Soiled Utility, Recovery, Phase 1	Follett REF2, Mediclick 90126	Refrigerator, Samples, Needs Temptrack	Facilities	New	1	\$ 2,000	\$ 2,000
Nursing	Soiled Utility, Recovery, Phase 1	Pamero Health - WH290 - 109	Holder, Oxiver	Environmental Service	New	1	\$ 34	\$ 34
Nursing	Soiled Utility, Recovery, Phase 1	Medline - MDS192094U	Holder, Glove, 4 Slot	Environmental Service	New	2	\$ 20	\$ 40
Nursing	Soiled Utility, Recovery, Phase 1	Grainger Rubbermaid cube truck, HDPE, Black 270 C	Gondola, Linen, soiled	Environmental Service	New	1	\$ 3,500	\$ 3,500
Nursing	Soiled Utility, Recovery, Phase 1		Contanier, O2 Masio	Medical Equipment	New	1	\$ 50	\$ 50
Nursing	Soiled Utility, Recovery, Phase 1		Container, Stryker, Cart	Environmental Service	New	1	\$ 50	\$ 50
Nursing	Soiled Utility, Recovery, Phase 1		Bio Hazard Container	Environmental Service	New	1	\$ 50	\$ 50
Nursing	Soiled Utility, Recovery, Phase 2		Waste, Drug	Environmental Service	New	2	\$ 20	\$ 40
Nursing	Soiled Utility, Recovery, Phase 2		Tote, Confidential	Environmental Service	New	2	\$ 100	\$ 200
Nursing	Soiled Utility, Recovery, Phase 2	Stericycle Recyling Program No charge for container	Sharps Container	Environmental Service	New	2	\$ 20	\$ 40
Nursing	Soiled Utility, Recovery, Phase 2	Grainger, Item #3U653	Regulate Waste, bins	Environmental Service	New	2	\$ 200	\$ 400
Nursing	Soiled Utility, Recovery, Phase 2	Follett REF2, Mediclick 90126	Refrigerator, Samples, Needs Temptrack	Facilities	New	1	\$ 2,000	\$ 2,000
Nursing	Soiled Utility, Recovery, Phase 2	Pamero Health - WH290 - 109	Holder, Oxiver	Environmental Service	New	1	\$ 34	\$ 34
Nursing	Soiled Utility, Recovery, Phase 2	Medline - MDS192094U	Holder, Glove, 4 Slot	Environmental Service	New	2	\$ 20	\$ 40
Nursing	Soiled Utility, Recovery, Phase 2	Grainger Rubbermaid cube truck, HDPE, Black 270 C	Gondola, Linen, soiled	Environmental Service	New	1	\$ 3,500	\$ 3,500
Nursing	Soiled Utility, Recovery, Phase 2		Contanier, O2 Masio	Medical Equipment	New	1	\$ 50	\$ 50
Nursing	Soiled Utility, Recovery, Phase 2		Container, Stryker, Cart	Environmental Service	New	1	\$ 50	\$ 50
Nursing	Soiled Utility, Recovery, Phase 2		Bio Hazard Container	Environmental Service	New	1	\$ 50	\$ 50
Nursing	Staff Locker	Vermont Plastic	Hand Sanitizer Guard	Environmental Service	New	1	\$ 21	\$ 21
Nursing	Staff Locker	WB Mason	Board, bulletin, foam 3'x4'	Furnishings/Equip	New	1	\$ 55	\$ 55
EVS	Staff Locker Bathroom	Grainger - 4PGU8	Trash, 23 Gallon	Environmental Service	New	4	\$ 80	\$ 320

Clinical	Area	Venor	Description	Category	Condition	Qty	Unit Price	Extended
EVS	Staff Locker Bathroom	Centurion Medical	Hamper, Linen, Soiled	Environmental Service	New	4	\$ 100	\$ 400
EVS	Staff Locker Bathroom		Curtain, shower, linen	Environmental Service	New	2	\$ 60	\$ 120
Physician	Storage Room, Anesthesia	Grainger - 4PGU8	Trash, 23 Gallon	Environmental Service	New	1	\$ 80	\$ 80
Nursing	Storage, Equipment, Prep	Mediclick Red 94452 Part #STCMDCERR-6S	Oxygen Tank Holder, Dirty	Medical Equipment	New	1	\$ 250	\$ 250
Nursing	Storage, Equipment, Prep	Green 94451 Part #STCMDE-6S	Oxygen Tank Holder, Clean	Medical Equipment	New	1	\$ 250	\$ 250
Nursing	Storage, Equipment, Recovery Phase 1	NTB2000	Sara Steady	Medical Equipment	New	3	\$ 2,300	\$ 6,900
Nursing	Storage, Equipment, Recovery Phase 1		Mayo Stands	Medical Equipment	New	3	\$ 1,000	\$ 3,000
Nursing	Storage, Equipment, Recovery Phase 1		Manual Blood Pressure, Rolling	Medical Equipment	New	2	\$ 1,000	\$ 2,000
Nursing	Storage, Equipment, Recovery Phase 1		Dynamap, Rolling	Medical Equipment	New	2	\$ 1,000	\$ 2,000
Nursing	Storage, Equipment, Recovery Phase 1	Mediclick Red 94452 Part #STCMDCERR-6S	Oxygen Tank Holder, Dirty	Medical Equipment	New	1	\$ 250	\$ 250
Nursing	Storage, Equipment, Recovery Phase 1	Green 94451 Part #STCMDE-6S	Oxygen Tank Holder, Clean	Medical Equipment	New	1	\$ 250	\$ 250
Nursing	Storage, Equipment, Recovery Phase 2	Mediclick Red 94452 Part #STCMDCERR-6S	Oxygen Tank Holder, Dirty	Medical Equipment	New	1	\$ 250	\$ 250
Nursing	Storage, Equipment, Recovery Phase 2	Green 94451 Part #STCMDE-6S	Oxygen Tank Holder, Clean	Medical Equipment	New	1	\$ 250	\$ 250
Nursing	Storage, Equipment, Recovery Phase 2		Stretcher	Medical Equipment	New	3	\$ 8,000	\$ 24,000
EVS	Toilet, Staff, Admin	Grainger - 4PGU8	Trash, 23 gallon	Environmental Service	New	1	\$ 80	\$ 80
EVS	Toilet, Visitor, Waiting	Grainger - 4PGU8	Trash, 23 gallon	Environmental Service	New	3	\$ 80	\$ 240
EVS	Toilet, Visitor, Waiting		Baby Changing Station	Environmental Service	New	1	\$ 1,500	\$ 1,500
EVS	Toilet/Shower, Staff, Locker	Haworth	Chair, Side, Staff	Furnishings/Equip	New	2	\$ 210	\$ 420
EVS	Trash/Recycle		Tote, Confidential	Environmental Service	New	1	\$ 100	\$ 100
EVS	Trash/Recycle	Grainger Rubbermaid cube truck, HDPE, Black 270 C	Gondola, Trash, Wheels	Environmental Service	New	24	\$ 80	\$ 1,920
EVS	Trash/Recycle	Grainger Rubbermaid cube truck, HDPE, Black 270 C	Gondola, Trash	Environmental Service	New	8	\$ 4,000	\$ 32,000
Perioperative	Waiting, Surgery	Integra, A Series	Table, End, Square 24"x20"	Furnishings/Equip	New	12	\$ 767	\$ 9,204
Perioperative	Waiting, Surgery	Haworth, Very	Table, End, Round, 24" x 24"	Furnishings/Equip	New	1	\$ 500	\$ 500
Perioperative	Waiting, Surgery	Integra, A Series	Table, Bistro 41"x30"x96" w/Multi-Outlet/12"H Modesti	Furnishings/Equip	New	1	\$ 2,188	\$ 2,188
Perioperative	Waiting, Surgery	3Form	Panels, Separation, Family	Furnishings/Equip	New	7	\$ 6,364	\$ 44,548
Perioperative	Waiting, Surgery	Haworth, Very	Chair, Stool, Waiting, No Wheels	Furnishings/Equip	New	6	\$ 561	\$ 3,366
Perioperative	Waiting, Surgery	Integra, Rend	Chair, Guest, Loveseat	Furnishings/Equip	New	4	\$ 1,547	\$ 6,188
Perioperative	Waiting, Surgery	KONCERT	Chair, Guest, Single	Furnishings/Equip	New	14	\$ 960	\$ 13,440
Perioperative	Waiting, Surgery	KONCERT	Chair, Guest, Settee	Furnishings/Equip	New	4	\$ 1,547	\$ 6,188
Perioperative	Waiting, Surgery	KONCERT	Chair, Guest, Hip	Furnishings/Equip	New	2	\$ 1,292	\$ 2,584
Perioperative	Waiting, Surgery	KONCERT	Chair, Guest, Bariatric, Hip	Furnishings/Equip	New	1	\$ 1,561	\$ 1,561
Perioperative	Waiting, Surgery	KONCERT	Chair, Guest, Bariatric	Furnishings/Equip	New	6	\$ 1,188	\$ 7,128
Perioperative	Waiting, Surgery	KONCERT	Bench	Furnishings/Equip	New	2	\$ 1,100	\$ 2,200
EVS	Walk-In Cooler		Refrigerator, Industrial, Walk-In, Needs Temptrack	Environmental Service	New	1	\$ 55,000	\$ 55,000
Pharmacy	Work Room, Facilities, TSP & IT	Grainger - 4PGU8	Trash, 23 Gallon	Environmental Service	New	1	\$ 80	\$ 80
Physician	Work Room, Facilities, TSP & IT		Table, Work, 72"x30"	Furnishings/Equip	New	1	\$ 400	\$ 400
Physician	Work Room, Facilities, TSP & IT	Improv	Chair, Task, Stool, w/o Arms	Furnishings/Equip	New	2	\$ 1,079	\$ 2,158
Pharmacy	Work Room, Pharmacy	Grainger - 4PGU8	Trash, 23 Gallon	Environmental Service	New	1	\$ 80	\$ 80
Pharmacy	Work Room, Pharmacy	Follett REF5, Mediclick, 90137	Refrigerator, Medicaion, Needs Temptrack	Facilities	New	2	\$ 2,500	\$ 5,000
Pharmacy	Work Room, Pharmacy		File, Ped, Box, Box, File, Mobile	Furnishings/Equip	New	1	\$ 454	\$ 454
Pharmacy	Work Room, Pharmacy		Desk, 60"x30"	Furnishings/Equip	New	1	\$ 1,164	\$ 1,164
Pharmacy	Work Room, Pharmacy	Improv	Chairs, Task, w/o Arms	Furnishings/Equip	New	1	\$ 701	\$ 701
Pharmacy	Work Room, Pharmacy		Cart, Metro, 3 shelf	Medical Equipment	New	3	\$ 1,000	\$ 3,000
Physician	Workroom, Anesthesia	Grainger - 4PGU8	Trash, 23 Gallon	Environmental Service	New	1	\$ 80	\$ 80

Clinical	Area	Venor	Description	Category	Condition	Qty	Unit Price	Extended
Physician	Workroom, Anesthesia	Follett REF2, Mediclick, 90126	Refrigerator, Medicaion, Needs Temptrack	Facilities	New	1	\$ 2,000	\$ 2,000
Physician	Workroom, Anesthesia		Cart, Utility, 3 shelf	Medical Equipment	New	3	\$ 300	\$ 900
Physician	Workroom, Anesthesia		Cabinet, Narcotics, Wall Mounted	Medical Equipment	New	1	\$ 900	\$ 900
Physician	Workroom, Anesthesia		File, Ped, Box, Box, File, Mobile	Furnishings/Equip	New	1	\$ 454	\$ 454
Physician	Workroom, Anesthesia		Desk, Modular	Furnishings/Equip	New	1	\$ 3,173	\$ 3,173
Physician	Workroom, Anesthesia	Improv	Chairs, Task, w/o Arms	Furnishings/Equip	New	1	\$ 679	\$ 679
Physician	Other	Other	Misc. FFE under Consideration	Misc/Other	New	1	\$ 100,000	\$ 100,000

\$ 13,910,047 \$ 16,290,516

Financial Assistance Summary

The University of Vermont Medical Center is a patient-centered organization committed to treating all patients equitably, with dignity and respect regardless of the patient's insurance benefits or financial resources. The University of Vermont Medical Center is committed to providing financial assistance to persons who have essential health care needs and are uninsured, underinsured, ineligible for a government program, or otherwise unable to pay, for medically necessary care based on their individual financial situation. The University of Vermont Medical Center strives to ensure that the financial capacity of people who need health care services does not prevent them from seeking or receiving care.

Financial assistance is not considered to be a substitute for personal responsibility. Patients are expected to cooperate with our procedures for obtaining charity or other forms of payment or financial assistance, and to contribute to the cost of their care based on their individual ability to pay. Individuals with the financial capacity to purchase health insurance shall be encouraged to do so, as a means of assuring access to health care services, for their overall personal health, and for the protection of their individual assets.

Applications are available online at www.UVMHealth.org, via Customer Service, by phone at (802) 847-8000 or (800) 639-2719, at the Financial Services Office at the Medical Center Campus or any Registration location at The University of Vermont Medical Center.

Service Eligibility

- Inpatient, emergent and urgent services and medically necessary elective services
- Exclusions from the assistance program:
 - Cosmetic services
 - Birth control, fertility and infertility services, including reversals
 - Services to residents outside of the financial eligibility area unless provided in an emergency room setting
 - Services deemed not medically necessary
 - Services reimbursed directly to the patient by an insurance carrier or third party
 - Services that have been placed in collections beyond 120 days of placement
 - Services rendered by The University of Vermont Medical Center Dental & Oral Health Clinic

Financial Need Determination

- Patients are invited to complete an application and are required to supply supporting financial documentation upon submission.
- Determination is a financial calculation based upon a patient's income and asset test.
- Coverage will be provided to patients whose income is at or below 400% of federal poverty level guidelines.
- May include the use of external publicly available data sources which provide information on ability to pay

Patient Eligibility

- Uninsured, underinsured or ineligible for any government health care benefit program.
- Eligibility shall be based upon an individualized determination of financial need and shall not take into account race, color, sex, sexual orientation, gender identity or expression, ancestry, place of birth, HIV status, national origin, religion, marital status, age, language, socioeconomic status, physical or mental disability. Protected veteran status or obligation for service in the armed forces.
- Eligibility is based upon an income and assets calculation.
- Patient must reside within The University of Vermont Medical Center financial eligibility area unless care was emergent (proof of residence is required). Part time residents and students must reside more than six months in VT/NY service area.
- All insurance plans, workers' compensation, third-party liability carriers, etc., must be billed.
- Patients who would qualify for public programs, including the health exchange, will be expected to apply for benefit coverage. Exclusion: Patients whose religious or cultural beliefs prohibit government assistance, will be required to assume a portion of financial responsibility.

Provider Coverage (MD non-covered list available)

- All employed UVM Medical Center medical providers rendering care at the UVM Medical Center and physician practices are covered.

Income and Assets

- Income not to exceed 400% of federal poverty guidelines for household size (income is calculated at gross earnings per month)

Financial Assistance Summary

- Dependents >18 years of age may be included in the household size provided they are listed as a dependent on federal income tax returns.
- Liquid assets not to exceed \$50,000. Assets include: cash, savings, checking, money market, CD's, term certificates, stocks/bonds, mutual funds, income drawn from retirement accounts and other liquid assets. Secondary homes, rental properties and fair market value for recreational vehicles. Exclusions include: Primary residence, rental property depending upon value, personal property such as furniture, apparel, livestock and non-recreational vehicles. Tuition stipends and/or grants for education.

Assistance Guidelines

- In accordance with financial need, eligible services under this policy will receive financial assistance based upon the federal poverty guidelines. The amount assessed to a patient will not exceed the amount generally billed to patients who have insurance coverage.
- Financial assistance may be applied against a six month coverage window, one year for >65 years of age with a fixed income. When the period has closed, patients will be required to re-apply and, based upon their financial status, may have their financial assistance category adjusted.
- Catastrophic assistance is available to patients whose balance exceeds 30% of their annual household income.
- The University of Vermont Medical Center acknowledges extenuating circumstances may exist where an individual's income may exceed program eligibility guidelines. Where these conditions exist, patients may submit a letter for consideration detailing the hardship.
- Cases which may require review for clinical necessity will be presented to the Chief Medical Officer for a decision on medical necessity.
- Patients whose applications are denied may appeal the decision. Requests for appeal should be sent to the Patient Financial Assistance Specialist in writing within 30 days of denial receipt and must clearly indicate the reason for appeal.

- Patients who qualify for assistance and who are cooperating in good faith to resolve their bills may be offered extended payment plans on balances not covered by the Patient Financial Assistance Program.
- The University of Vermont Medical Center does not engage in extraordinary collection actions.

Application Process

- Patients who face financial hardship are encouraged to apply for assistance. The full financial assistance policy and application are available online at www.UVMHealth.org, via mail by contacting Customer Service at (802) 847-8000 or (800) 639-2719, at the Patient Financial Services Office at the Medical Center Campus, 111 Colchester Ave, Burlington VT, or any Registration location. Questions regarding the policy or process and/or if you need help completing an application, please contact Customer Service via phone or in person at the Financial Services office at the Medical Center Campus.
- Applications must be completed in full and be accompanied by all required supporting documentation. Please refer to the application check list before submission.
- Incomplete applications will remain unprocessed and will be rejected if supporting documentation is not received within 14 days of submission. If incomplete, a period of 30 days shall be allowed to provide the remaining information.
- Receipt of a completed application, documentation included, will begin a processing period where the financial status of the family will be reviewed. This will include a review of all family balances, medical necessity of service and an income test/assets review.
- Requests for assistance will be processed promptly and The University of Vermont Medical Center will notify the patient applicant of a decision in writing within 30 days of receipt.
- The University of Vermont Medical Center will apply the adjustment financial assistance to all eligible services and subsequently bill the patient for any remaining balances.

Federal Poverty Level	Less than 200%	201% - 250%	251% - 300%	301% - 350%	351% - 400%
Financial Assistance Percentage Discount	100%	85%	75%	65%	57%

Discrimination is Against the Law

The University of Vermont Medical Center complies with applicable federal civil rights laws and does not discriminate, exclude people or treat them differently on the basis of race, color, sex, sexual orientation, gender identity or expression, ancestry, place of birth, HIV status, national origin, religion, marital status, age, language, socioeconomic status, physical or mental disability, protected veteran status or obligation for service in the armed forces.

THE UVM MEDICAL CENTER PROVIDES FREE AIDS AND SERVICES TO DEAF PEOPLE AND PEOPLE WITH DISABILITIES TO COMMUNICATE EFFECTIVELY WITH US, SUCH AS:

- Qualified sign language interpreters
- Written information in other formats (large print, audio, accessible electronic formats, other formats)

If you need these services, call (802) 847-3553.

THE UVM MEDICAL CENTER PROVIDES FREE LANGUAGE SERVICES TO PEOPLE WHOSE PRIMARY LANGUAGE IS NOT ENGLISH, SUCH AS:

- Qualified interpreters
- Information written in other languages

If you need these services, call (802) 847-8899.

If you believe that the UVM Medical Center has failed to provide these services or discriminated in another way on the basis of race, color, sex, sexual orientation, gender identity or expression, ancestry, place of birth, HIV status, national origin, religion, marital status, age, language, socioeconomic status, physical or mental disability, protected veteran status or obligation for service in the armed forces, you can file a grievance with:

Office of Patient and Family Advocacy

UVM Medical Center

111 Colchester Avenue

Burlington, VT 05401

Phone: (802) 847-3502

Fax: (802) 847-0384

PatientandFamilyAdvocacy@uvmhealth.org

You can file a grievance in person or by mail, fax, or email. If you need help filing a grievance, the Office of Patient and Family Advocacy is available to help you.

You can also file a civil rights complaint with the U.S. Department of Health and Human Services Office for Civil Rights electronically through the Office for Civil Rights Complaint Portal, available at:

<https://ocrportal.hhs.gov/ocr/portal/lobby.jsf>

or by mail or phone at:

U.S. Department of Health and Human Services

200 Independence Avenue SW

Room 509F, HHH Building

Washington, DC 20201

(800) 368-1019, (800) 537-7697(TTD)

Discrimination is Against the Law

NEPALI | नेपाली

ध्यान दिनुहोस्: तपाईंले नेपाली बोल्नुहुन्छ भने तपाईंको निम्ति भाषा सहायता सेवाहरू निःशुल्क रूपमा उपलब्ध छ । फोन गर्नुहोस् (802) 847-8899.

BOSNIAN | Bosanski

PAŽNJA: Ako govorite Bosanski, usluge pomoći jezika, bez naknade, na raspolaganju su vam. Poziv (802) 847-8899.

ARABIC | العربية

ذات ت امدخ قدعا سملا ق و غ ل ل ر ف ل و ت ت كل ن ا ج م ل ب . ل ص ت ا م ق ر ب
تظو د ل م : ا ذ ا ت ن ك ت د د ت ر ك ذ ا ال ل ع ة . (802) 847-8899

SOMALI | Soomaali

DHEG: haddii aad ku hadashid Soomaali, adeegyada kaalmo luqadeed bilaash ayaa lagu helayo. Wac (802) 847-8899.

SPANISH | Español

ATENCIÓN: si habla español, tiene a su disposición servicios gratuitos de asistencia lingüística. Llame al (802) 847-8899.

MANDARIN | 國語

注意：如果您说中文，可免费获得语言援助服务。拨打 (802) 847-8899.

CANTONESE | 廣東話

請注意：如果你講廣東話，語言協助服務係免費嘍，如要幫助，請撥打熱線 (802) 847-8899.

VIETNAMESE | Tiếng Việt

CHÚ Ý: Nếu bạn nói Tiếng Việt, có các dịch vụ hỗ trợ ngôn ngữ miễn phí dành cho bạn. Gọi số (802) 847-8899.

FRENCH | Français

ATTENTION : Si vous parlez français, des services d'aide linguistique vous sont proposés gratuitement. Appelez le (802) 847-8899.

MAAY MAAY

DIGNIIN: hattii ada ka hadalaasa Maay Maay, adeegada gargaarka luugada, oo bilaash eh, yaa lakin helee ada. Han weer (802) 847-8899.

RUSSIAN | русском

ВНИМАНИЕ: Если вы говорите на русском языке, то вам доступны бесплатные услуги перевода. Звоните (802) 847-8899.

SERBO CROATIAN | Srpsko-Hrvatski

OBAVJEŠTENJE: Ako govorite srpsko-hrvatski, usluge jezičke pomoći dostupne su vam besplatno. Nazovite (802) 847-8899.

THAI | ภาษาไทย

เรียน:

ถ้าคุณพูดภาษาไทยคุณสามารถใช้บริการช่วยเหลือทางภาษาไทย
ได้ฟรี โทร (802) 847-8899.

TAGALOG

PAUNAWA: Kung nagsasalita ka ng Tagalog, maaari kang gumamit ng mga serbisyo ng tulong sa wika nang walang bayad. Tumawag sa (802) 847-8899.

SWAHILI | Kiswahili

KUMBUKA: Ikiwa unazungumza Kiswahili, unaweza kupata huduma za lugha, bila malipo. Piga simu (802) 847-8899.

JAPANESE | 日本語

注意事項：日本語を話される場合、無料の言語支援をご利用いただけます。(802) 847-8899 まで、お電話にてご連絡ください。

BURMESE | ကြမ္မာမူ

သတိပြုရန် - အကယ်၍ သင်သည် မြန်မာစကားကို ပြောပါက၊
ဘာသာစကား အကူအညီ၊ အခမဲ့၊ သင့်အတွက်
စီစဉ်ဆောင်ရွက်ပေးပါမည်။ ဖုန်းနံပါတ် (802) 847-8899 သို့ ခေါ်ဆိုပါ။

KIRUNDI | Ikirundi

ICITONDERWA: Nimba uvuga Ikirundi, uzohabwa serivisi zo gufasha mu ndimi, ku buntu. Woterefona (802) 847-8899

KAREN | unD

ဟ်သ့ဟ်သး- နမ့ၢ်ကတိၢ် ကညိၢ် ကျိၢ်အယိၢ်. နမ့ၢ်ကျိၢ်အတၢ်မၤစၢၤလၢ
တလၢ်ဘျုးလၢ်စ့ၢ် နိတမံၤဘျုးသ့န့ၢ်လိၢ်. ကိး (802) 847-8899