

SASH[®]

SUPPORT AND SERVICES
AT HOME

a caring partnership



Cathedral Square

*Advancing Healthy Homes, Caring Communities
& Positive Aging since 1977*

sashvt.org

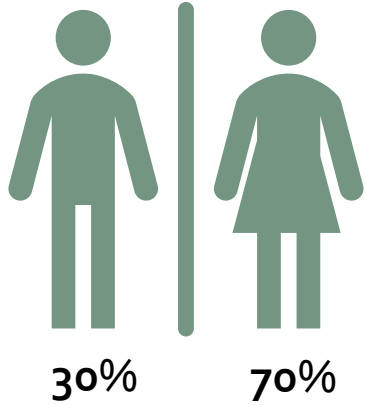
Better Care.
Healthier People.
Smarter Spending.

SASH[®]

Is turning 10
~9,000 served!



SASH Participants



Top 3 chronic conditions among SASH participants



75%

of SASH participants have 3 or more chronic conditions

6

median number of chronic conditions for SASH participants

22

AGE



73

104

History of SASH funding

2009-2010

- Cathedral Square
- Foundation Funds and Legislative Appropriation

2011-2016

- MAPCP Demonstration Funds
- DAIL, DVHA, and VDH
- Housing Organizations

2017-2021

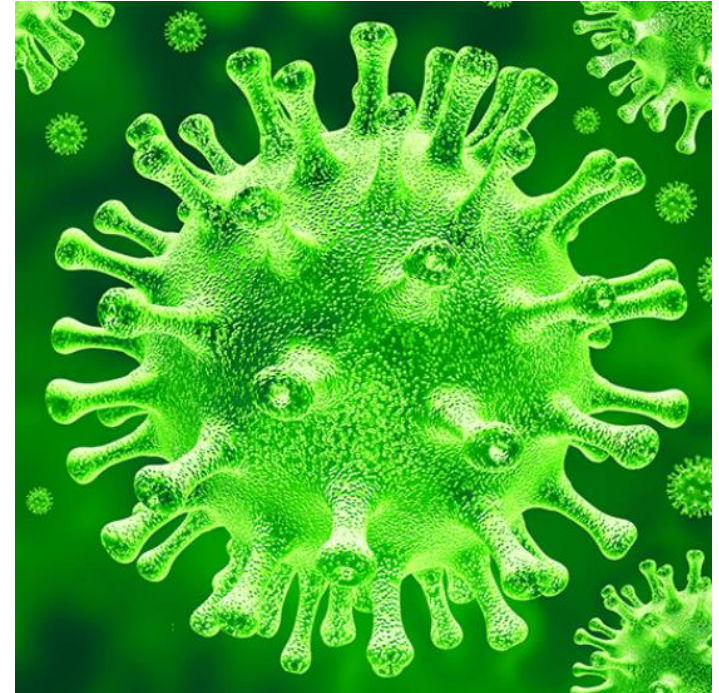
- All Payer Model
- DAIL, DVHA, and VDH
- Housing Organizations

Future Funding Concerns

- Health Information Technologies
- Department of Aging and Independent Living
- All Payer Model

COVID-19 Response

- Enhanced Staff Support
- Participant Education and Support
- Vaccines




Connection Through Technology

SASH a caring partnership
SUPPORT AND SERVICES AT HOME

IPAD LOANER PROGRAM

Each SASH panel has new iPads available to loan to participants for telehealth visits, connecting with friends and family, attending online sessions, and more. Call or email your SASH Coordinator to reserve a *sanitized* iPad for your personal use!



RESERVE AN IPAD FOR...

Telehealth Appointments

- Request a telehealth visit with your doctor instead of an in-clinic visit for your health care needs, including screening for COVID-19, prescription needs, nutrition support, emotional and mental health support, and virtually any other need.
- Receive specialty care in the comfort of home.
- Avoid the waiting room and eliminate your exposure to patients who are ill.

RESERVE AN IPAD TO...

Maintain Social Connections
Visit with friends and family online!

RESERVE AN IPAD TO...

Participate in Local Events
Attend online classes, educational seminars, government meetings and more!

RESERVE AN IPAD FOR...

Personal Entertainment
Partake in games and puzzles, listen to music, watch videos and more!

RESERVE AN IPAD TO...

Attend SASH Programming
Join in virtual tai chi, Bone Builders and other health-focused classes!

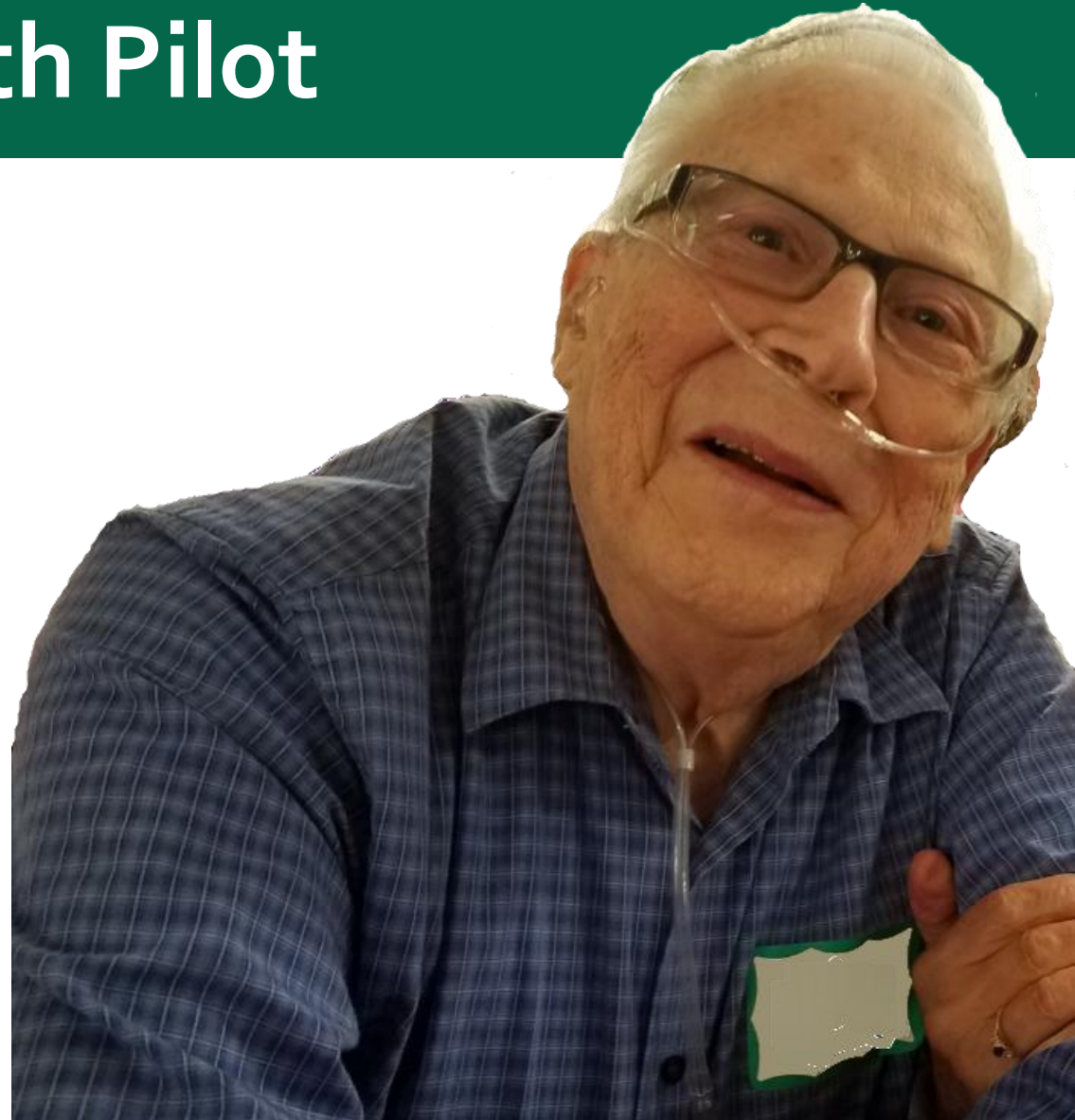
CONTACT:

Thanks to the Vermont Program for Quality in Health Care for making this program possible.



Mental Health Pilot

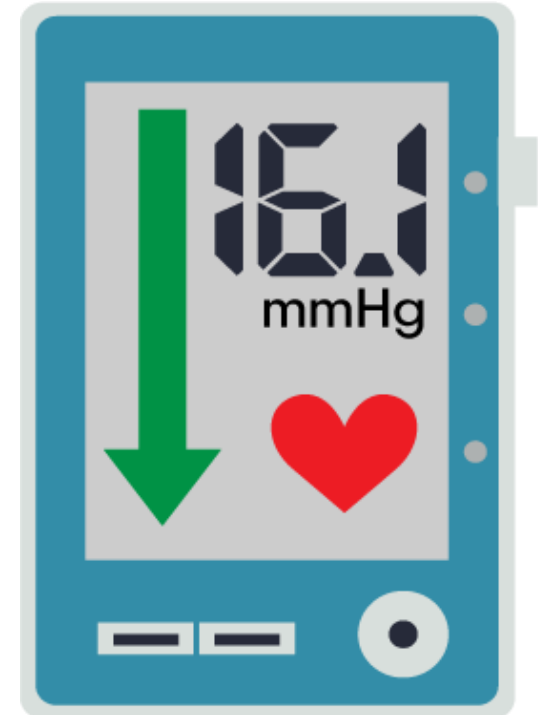
- *"Alison has been there for us on Zoom for discussions on coping, making sure we were alright."*
- *"I wonder how anybody can deal with the COVID virus without her support and insight that will probably last a lifetime."*
- *"The services and support during this time have been wonderful. The SASH staff is so supportive and caring. It means a great deal especially during these trying times. I really feel safe and like I matter."*



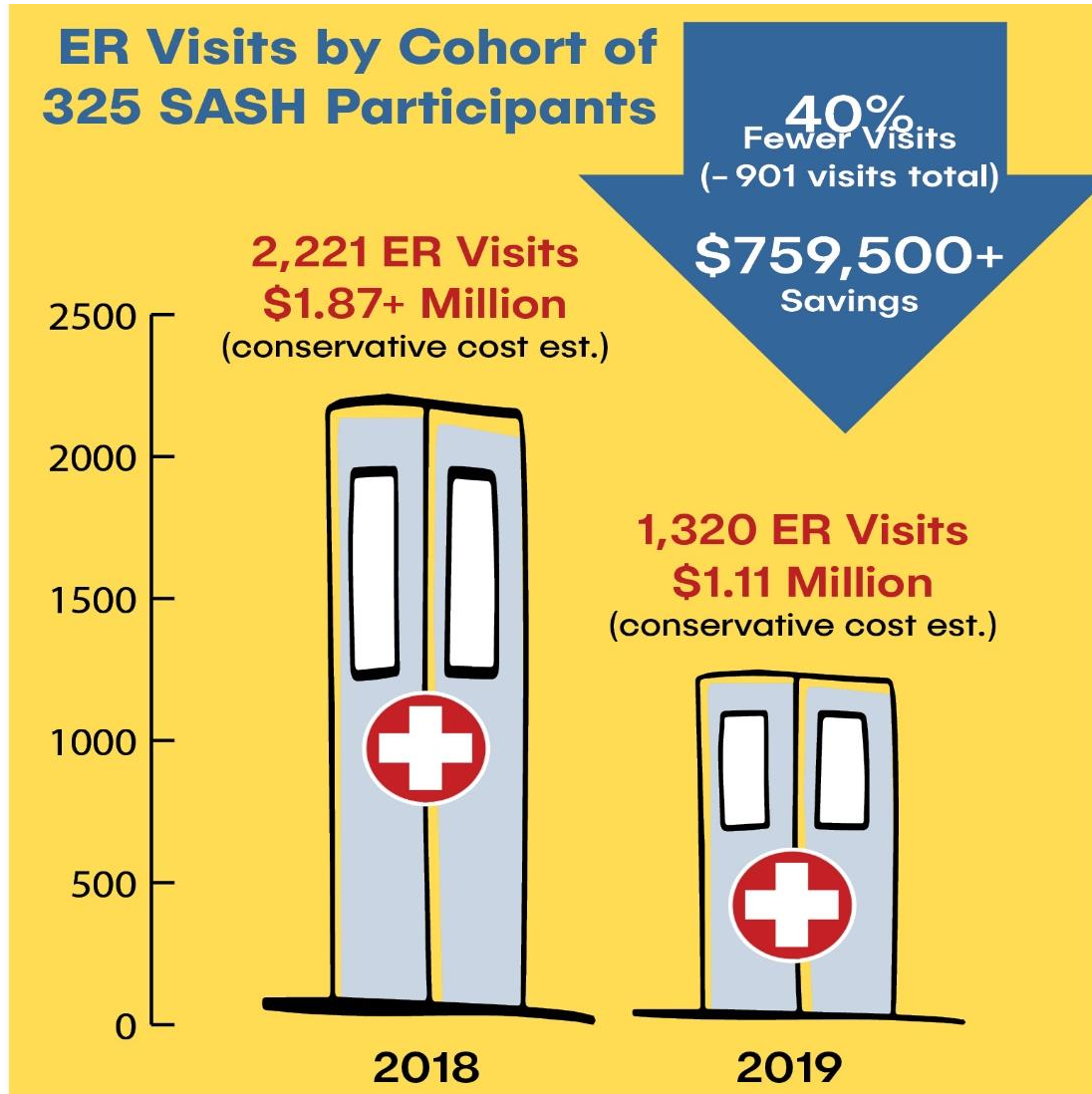
Participants Show Lower Blood Pressure Over Time

Of 3,610 SASH participants with a prior Stage 2 blood-pressure reading (140+ systolic) :

- First average Stage 2 reading = **148.8** mmHg systolic
- January 2021 average reading = **132.7** mmHg systolic



SASH Participants Show Major Decline in ER Use



901 fewer visits in one year

Conservative cost savings = \$759,543

SASH expansion



More SASH Panels



Mental Health



SASH for All

Contact Information

Kim Fitzgerald

Cathedral Square CEO

fitzgerald@cathedralsquare.org

Melissa Southwick

SASH Director

Southwick@cathedralsquare.org

sashvt.org

SASH@cathedralsquare.org | 802-863-2224