

ELECTRICAL NOTES

1. THIS SPECIFICATION SHEET IS INTENDED AS A GUIDE FOR TRADESMEN. THE FLOOR PLANS ENCLOSED HEREIN ARE SUGGESTIONS FOR THE PLACEMENT OF DENTAL EQUIPMENT. THEY ARE NOT INTENDED FOR CONSTRUCTION.
2. EXACT EQUIPMENT LOCATIONS MUST BE JOB SITE VERIFIED BY THE HENRY SCHEIN DENTAL EQUIPMENT SPECIALIST.
3. FOLLOW MANUFACTURER'S DRAWINGS FOR EXACT REQUIREMENTS FOR ANY EQUIPMENT SUPPLIED BY HENRY SCHEIN DENTAL. CONSULT WITH HENRY SCHEIN DENTAL REP FOR ADDITIONAL INFORMATION.
4. GFCI PROTECTION OR REDUNDANT GROUND IN DENTAL CHAIR RECEPTACLES, DENTAL UTILITY CABINETS AND ANY OTHER AREAS REQUIRED BY LOCAL CODE IS THE RESPONSIBILITY OF THE ELECTRICAL CONTRACTOR.
5. ADDITIONAL CONVENIENCE OUTLETS REQUIRED ON JOBSITE ARE THE RESPONSIBILITY OF ELECTRICAL CONTRACTORS. FOLLOW LOCAL CODE RESTRICTIONS.
6. ALL COMPUTER NETWORKING AND WORKSTATIONS MUST BE SPECIFIED BY CUSTOMER'S COMPUTER SUPPLIER. IF HENRY SCHEIN WILL BE SUPPLYING THE COMPUTER NETWORKING SYSTEM, SEE SHEET SE.2 FOR THE OFFICE AUTOMATION PLAN.

ELECTRICAL LEGEND

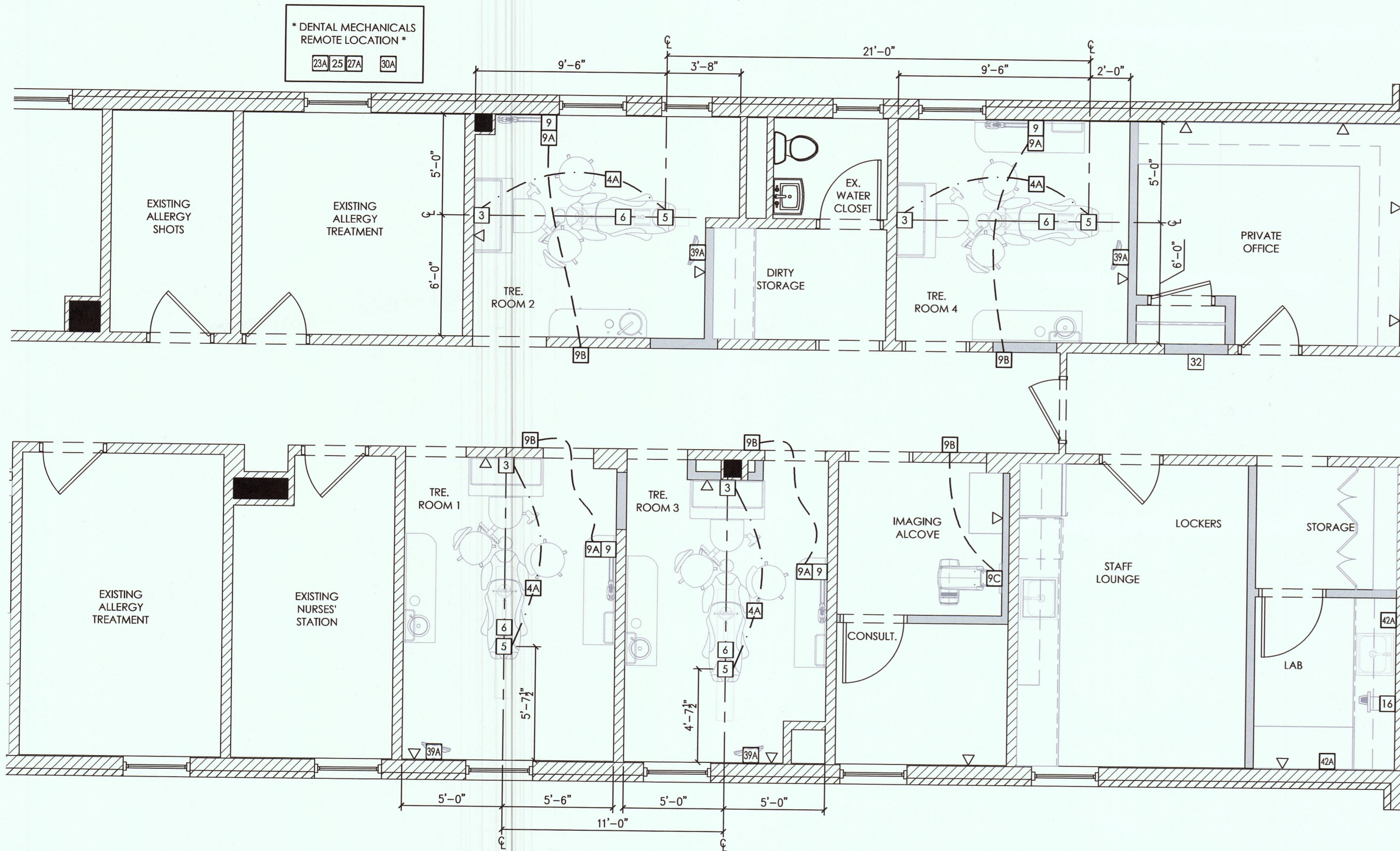
ALL HEIGHTS TO BE SPECIFIED ON-SITE UNLESS NOTED OTHERWISE

▽ DATA DROP/OUTLET

SEE SHEET SPE.1 FOR ILLUSTRATIONS & DETAILS

ELECTRICAL SPECIFICATIONS

QUANTITY	SPEC. NUMBER	DESCRIPTION	UTILITIES				CONSTRUCTION DETAIL
			ELECTRICAL NEEDS (ALSO SEE DETAILS)	DEDICATED CIRCUIT	LOW VOLTAGE CONTROL	MECHANICAL DETAIL	
4	3	UTILITY CENTER - BACK FLOW PREVENTION REQUIRED AS PER LOCAL CODE.	115V, 20A			3	
4	4A	2" CONDUIT - PIPE CHASE WITH PULL-STRING SUPPLIED AND INSTALLED BY CONTRACTOR					
4	5	DENTAL CHAIR RECEPTACLE - SUPPLIED & INSTALLED BY CONTRACTOR.	115V, 20A			5	
4	6	DENTAL TRACK LIGHT - SUPPLIED AND INSTALLED BY HENRY SCHEIN DENTAL	115V, 15A			6	
4	9	WALL MOUNTED INTRAORAL X-RAY HEAD, ARM, AND WALL BRACKET - SUPPLIED AND INSTALLED BY HENRY SCHEIN DENTAL. REQUIRES A 3 WIRE GROUNDED CIRCUIT.	115V, 20A	*		9	
4	9A	X-RAY MASTER CONTROL - CONTRACTOR TO SUPPLY AND INSTALL PIPE CHASE WITH PULL-STRING TO (9) LOCATION WHEN (9A) IS REMOTE. VERIFY SUPPLIER OF WIRING WITH HENRY SCHEIN EQUIPMENT SPECIALIST. FINAL CONNECTION BY HENRY SCHEIN DENTAL.		*			
5	9B	X-RAY REMOTE EXPOSURE BUTTON - CONTRACTOR TO SUPPLY AND INSTALL PIPE CHASE WITH PULL-STRING TO (9A) OR (9C) LOCATION. VERIFY SUPPLIER OF EXPOSURE BUTTON AND WIRING WITH HENRY SCHEIN EQUIPMENT SPECIALIST. FINAL CONNECTION BY HENRY SCHEIN DENTAL.		*		9B	
1	9C	PANORAMIC AND/OR CEPHALOMETRIC X-RAY/ CONE BEAM UNIT - SUPPLIED AND INSTALLED BY HENRY SCHEIN DENTAL. REQUIRES A 3 WIRE GROUNDED CIRCUIT.	115V & 230V, 20A	*	*	9C	
1	16	MODEL TRIMMER - SUPPLIED AND INSTALLED BY HENRY SCHEIN DENTAL. BACK FLOW PREVENTION AS REQUIRED PER CODE.	115V, 15A			16	
1	23A	EXHAUST FAN FOR DENTAL MECHANICAL CLOSET - SUPPLIED AND INSTALLED BY CONTRACTOR. A THERMOSTAT CONTROLLED LOW SONE FAN IS REQUIRED TO KEEP ROOM TEMPERATURE WITHIN THE EQUIPMENT MANUFACTURER'S RECOMMENDED OPERATING TEMPERATURE RANGE. VENT TO OUTSIDE.	115V, 20A				
1	25	DENTAL AIR COMPRESSOR - SUPPLIED BY HENRY SCHEIN DENTAL, INSTALLED BY CONTRACTOR. FOR GAS-DRIVEN DEVICES IN A LEVEL 3 FACILITY. 1/2" I.D. COPPER TYPE K OR L SUPPLY LINES TO LOCATIONS THAT REQUIRE AIR. BUCK BOOST TRANSFORMER SUPPLIED AND INSTALLED BY CONTRACTOR (IF REQ'D). FINAL CONNECTIONS BY CONTRACTOR. REFER TO NFPA 99, 2005, 5.3.3.5 FOR REGULATIONS & REQUIREMENTS.	230V, 20A	*	*	25	
1	27A	VACUUM PUMP (DRY) - SUPPLIED BY HENRY SCHEIN DENTAL, INSTALLED BY CONTRACTOR. 1.5" OR 2" MAIN TRUNK LINES. USE SCH 40 PVC WHERE PERMITTED BY CODE. VERIFY TRUNK & BRANCH LINE SIZES WITH MFR RECOMMENDATIONS. EXHAUST PUMP TO OUTSIDE. BACK FLOW PREVENTION REQ'D PER LOCAL CODE. BUCK BOOST TRANSFORMER SUPPLIED AND INSTALLED BY CONTRACTOR (IF REQ'D). FINAL CONNECTIONS BY CONTRACTOR. PROVIDE WATER LINE WITH HOSE BIB NEAR UNIT.	230V, 30A	*	*	27A	
1	30A	REMOTE WATER CONTROL VALVE W/FILTER - SUPPLIED BY HENRY SCHEIN DENTAL, INSTALLED BY CONTRACTOR ON COLD WATER SUPPLY LINE TO THE OFFICE.	115V, 15A	*		30A	
1	32	REMOTE PANEL (AIR, WATER, & VAC) - SUPPLIED BY HENRY SCHEIN DENTAL, INSTALLED BY CONTRACTOR 60" A.F.F. CONTRACTOR TO SUPPLY AND INSTALL 24V CONTROL WIRING PER MFR SPECS.		*		32	
4	39A	WALL MOUNTED MONITOR - EXACT LOCATION PER OWNER AND HENRY SCHEIN EQUIPMENT SPECIALIST.	SEE MFG. SPECS			39A	
2	42A	TASK LIGHTING - SUPPLIED AND INSTALLED BY CONTRACTOR.	115V, 15A				



PROPOSED DENTAL ELECTRICAL SPECIFICATIONS

1/4"=1'-0"

HENRY SCHEIN®
DENTAL
10920 WEST LINCOLN AVENUE
WEST ALLIS, WI 53227

SVMC DENTAL CLINIC
PROJECT:
LOCATION: 100 HOSPITAL DRIVE, BENNINGTON, VT 05201

HENRY SCHEIN REP:
HARRY FLEASAS
CENTER:
BOSTON, MA
PHONE #:
(603) 731-4323

IMPORTANT NOTE:
THIS DOCUMENT HAS BEEN PREPARED AS AN INSTRUMENT OF PROFESSIONAL SERVICE, AND IS NOT AN ARCHITECTURAL PLAN. THE IDEAS/DESIGNS INCLUDED HEREIN ARE THE SOLE PROPERTY OF HENRY SCHEIN DENTAL, AND ARE PROTECTED UNDER COPYRIGHT. THEY MAY NOT BE USED OR REPRODUCED WITHOUT EXPRESSED WRITTEN CONSENT OF HENRY SCHEIN AND FULL PAYMENT OF ANY ASSOCIATED DESIGN FEES.
ALL DIMENSIONS ARE SUBJECT TO JOB-SITE VERIFICATION.

DRAWING NAME:
SVMC DENTAL-1H-F
PROJECT START DATE:
11/12/2015
FINALS START DATE:
03/28/2016
DRAWN BY: AKL
FINALS BY: AKL
CHECKED BY: JLR

REVISIONS:

INT. SQ. FT. = 1243

SCALE: 1/4"=1'-0" SHT. SIZE: D
ELECTRICAL PLAN

SE.1