

**VACUUM NOTES**

THE VACUUM PIPING LAYOUT HAS A LARGE EFFECT ON THE EFFICIENCY AND RELIABILITY OF THE DENTAL VACUUM SYSTEM. REFER TO MANUFACTURER'S PRE-INSTALLATION GUIDE PROVIDED BY HENRY SCHEIN EQUIPMENT SPECIALIST (FOR SPECIFIC SIZING OF STUB-UP, TRUNK, AND BRANCH LINES).

IT IS HIGHLY RECOMMENDED THAT VACUUM LINES RUN UNDERNEATH DENTAL EQUIPMENT BY MEANS OF TRENCHING/ CORING (CONCRETE SLAB) OR IN SUB FLOOR (BASEMENT/ CRAWL SPACE). ALL LINES ARE TO BE DESIGNED WITH PVC PIPING UNLESS DICTATED BY LOCAL CODES TO USE COPPER OR CAST IRON.

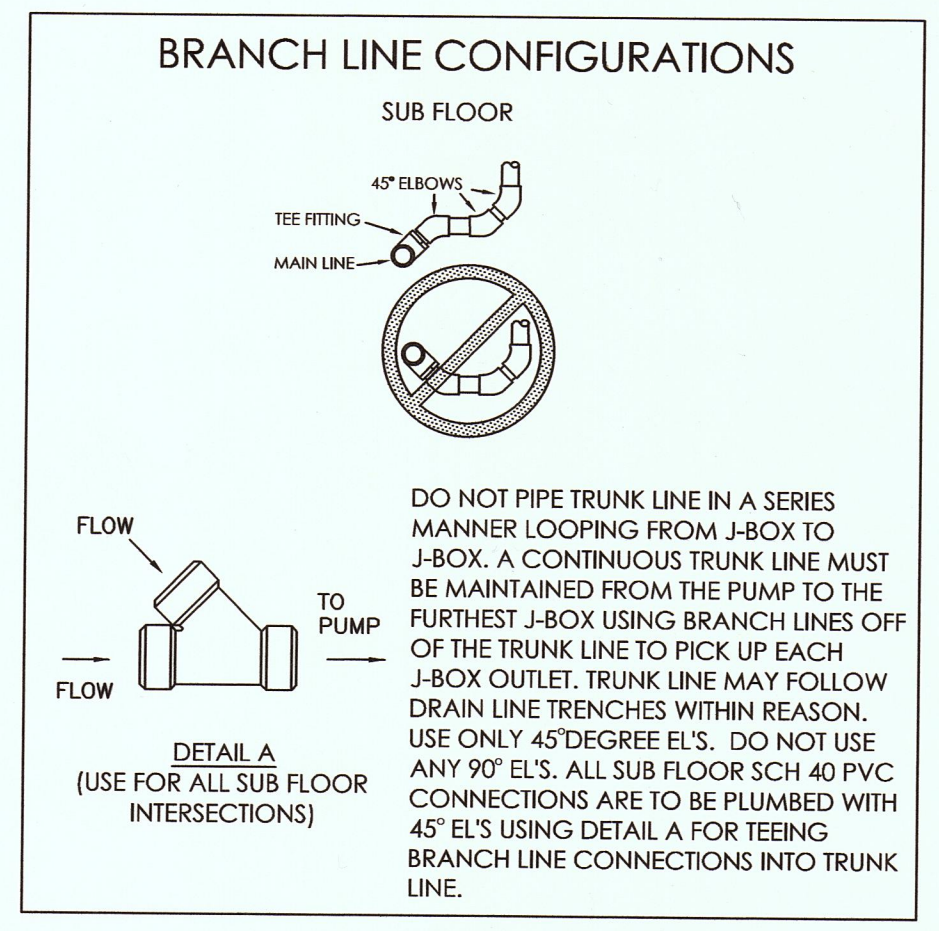
TO ENSURE OPTIMUM VACUUM PERFORMANCE, INSTALL MAIN LINE DIRECTLY BELOW THE DENTAL CHAIR, CABINET OR WALL JUNCTION BOX TO REDUCE OR ELIMINATE BRANCH LINE RUNS WHEREVER POSSIBLE.

**1. STUB-UP**  
TERMINATE VACUUM TRUNK LINE IN MECHANICAL ROOM W/ VERTICAL STUB-UP 3" A.F.F. PLUMBING CONTRACTOR TO PROVIDE FFT ADAPTOR ON END OF STUB-UP. SIZE OF ADAPTOR TO BE DETERMINED BY TRUNK AND PUMP INTAKE PIPE SIZES. IN THE CASE OF DUAL TRUNK LINE SYSTEM, PROVIDE ENOUGH SPACE BETWEEN STUB-UPS TO INSTALL TEES ON BOTH LINES.

**2. TRUNK LINE(S)**  
VACUUM TRUNK LINE(S) TO BE SUPPORTED EVERY 6'-0" TO PREVENT SAG AND SLOPED A MINIMUM OF 1/4" PER 10'-0" TOWARD THE VACUUM PUMP.

**3. BRANCH LINE(S)**  
BRANCH LINES ARE TO BE "SWEEPING" 90 DEGREE TURNS TO AVOID VACUUM LOSS. A "Y" TEE FITTING SHOULD BE USED WHEN AVAILABLE TO BRANCH TWO LINES TOGETHER.

**SPECIAL NOTE:**  
IF VACUUM LINES ENCR OACH ON EITHER A WALL OR COLUMN FOOTING, USE 45 DEGREE ELBOWS TO PIPE AROUND FOOTING SO PIPE REACHES PROPER LOCATION.



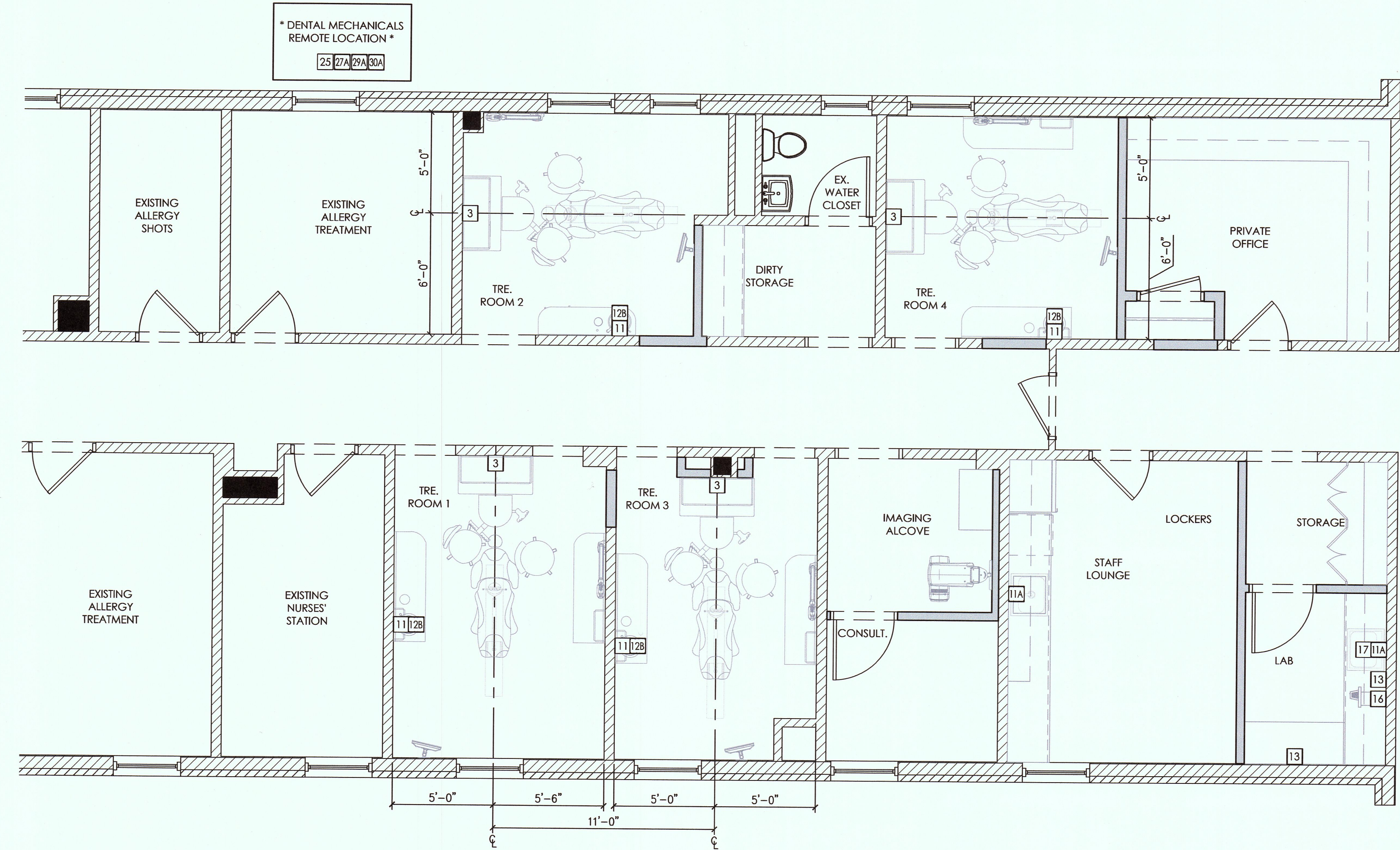
**PLUMBING NOTES**

1. THIS SPECIFICATION SHEET IS INTENDED AS A GUIDE FOR TRADESMEN. THE FLOOR PLANS ENCLOSED HEREIN ARE SUGGESTIONS FOR THE PLACEMENT OF DENTAL EQUIPMENT. THEY ARE NOT INTENDED FOR CONSTRUCTION.
  2. EXACT EQUIPMENT LOCATIONS MUST BE JOB SITE VERIFIED BY THE HENRY SCHEIN DENTAL EQUIPMENT SPECIALIST.
  3. FOLLOW MANUFACTURER'S DRAWINGS FOR EXACT REQUIREMENTS FOR ANY EQUIPMENT SUPPLIED BY HENRY SCHEIN DENTAL. CONSULT WITH HENRY SCHEIN DENTAL REP FOR ADDITIONAL INFORMATION.
  4. ANY REFERENCE TO "AIR", "COMPRESSED AIR" OR "AIR COMPRESSOR" REFER TO THE UNIT AND ALL COMPONENTS WHICH ARE CONSIDERED A LEVEL 3 "GAS-DRIVEN DEVICE" SUPPLY SYSTEM. REFER TO NFPA 99, 2005, 5.3.3.5 FOR REGULATIONS & REQUIREMENTS. THIS SHOULD NOT BE CONFUSED WITH "AIR" AS IT IS DEFINED IN LEVEL 1 OR LEVEL 2 MEDICAL FACILITIES.
  5. WATER PRESSURE MUST NOT EXCEED 50 PSI AT ALL DENTAL UNITS.
  6. BACK-FLOW PREVENTION IS REQUIRED ON ALL LINES AS PER LOCAL CODE.
- SEE SHEET SPE.1 FOR ILLUSTRATIONS & DETAILS

**PLUMBING SPECIFICATIONS**

PLEASE NOTE: CONTRACTOR IS RESPONSIBLE FOR PROVIDING ALL REQUIRED UTILITIES. ALL REQUIREMENTS TO BE VERIFIED BY MANUFACTURER'S SPEC SHEETS PROVIDED BY HENRY SCHEIN DENTAL EQUIPMENT SPECIALIST. MANUFACTURER'S SPECS SUPERSEDE ANY AND ALL INFORMATION CONTAINED HEREIN.

QUANTITY	SPEC. NUMBER	DESCRIPTION	UTILITIES							MECH. DETAIL	CONS. DETAIL	
			COLD WATER	HOT WATER	DRAIN	COMPRESSED AIR	NATURAL GAS	VACUUM	N2O			OXYGEN
4	3	UTILITY CENTER - BACK FLOW PREVENTION REQUIRED AS PER LOCAL CODE.										
4	11	MODULAR SINKS & FAUCETS - SINK AND FAUCET SUPPLIED BY HENRY SCHEIN DENTAL, INSTALLED BY CONTRACTOR. FINAL CONNECTIONS BY CONTRACTOR.										
2	11A	STANDARD SINK & FAUCET - CONTRACTOR TO PROVIDE AND INSTALL SINK AND FAUCET. MANUFACTURER AND STYLE DETERMINED BY OWNER. FINAL CONNECTIONS BY CONTRACTOR.										
4	12B	WATER POWERED TAP MASTER FAUCET CONTROL - FROM (12B) TO (11) OR (11A), SUPPLIED BY HENRY SCHEIN DENTAL, INSTALLED BY CONTRACTOR.									12B	
2	13	COMPRESSED AIR LINE AND VALVE - TERMINATE WITH A 1/2" SWEAT X 3/8" COMPRESSION STOP. PREVENTION AS REQUIRED PER CODE.										13
1	14	MODEL TRIMMER - SUPPLIED AND INSTALLED BY HENRY SCHEIN DENTAL. BACK FLOW PREVENTION AS REQUIRED PER CODE.										14
1	17	PLASTER TRAP - SUPPLIED BY HENRY SCHEIN DENTAL, INSTALLED BY CONTRACTOR ON SINK DRAIN LINE.										17
1	25	DENTAL AIR COMPRESSOR - SUPPLIED BY HENRY SCHEIN DENTAL, INSTALLED BY CONTRACTOR. FOR GAS-DRIVEN DEVICES IN A LEVEL 3 FACILITY. 1/2" I.D. COPPER TYPE K OR L SUPPLY LINES TO LOCATIONS THAT REQUIRE AIR. BUCK BOOST TRANSFORMER SUPPLIED AND INSTALLED BY CONTRACTOR (IF REQ'D). FINAL CONNECTIONS BY CONTRACTOR. REFER TO NFPA 99, 2005, 5.3.3.5 FOR REGULATIONS & REQUIREMENTS.										25
1	27A	VACUUM PUMP (DRY) - SUPPLIED BY HENRY SCHEIN DENTAL, INSTALLED BY CONTRACTOR. 1.5" OR 2" MAIN TRUNK LINES. USE SCH 40 PVC WHERE PERMITTED BY CODE. VERIFY TRUNK & BRANCH LINE SIZES WITH MFR RECOMMENDATIONS. EXHAUST PUMP TO OUTSIDE. BACK FLOW PREVENTION REQ'D PER LOCAL CODE. BUCK BOOST TRANSFORMER SUPPLIED AND INSTALLED BY CONTRACTOR (IF REQ'D). FINAL CONNECTIONS BY CONTRACTOR. PROVIDE WATER LINE WITH HOSE BIB NEAR UNIT.										27A
1	29A	AMALGAM SEPARATOR - SUPPLIED BY HENRY SCHEIN DENTAL, INSTALLED BY PLUMBER. VERIFY LOCATION WITH HENRY SCHEIN DENTAL EQUIPMENT SPECIALIST.										29A
1	30A	REMOTE WATER CONTROL VALVE W/FILTER - SUPPLIED BY HENRY SCHEIN DENTAL, INSTALLED BY CONTRACTOR ON COLD WATER SUPPLY LINE TO THE OFFICE.										30A



**PROPOSED DENTAL PLUMBING SPECIFICATIONS**  
1/4"=1'-0"