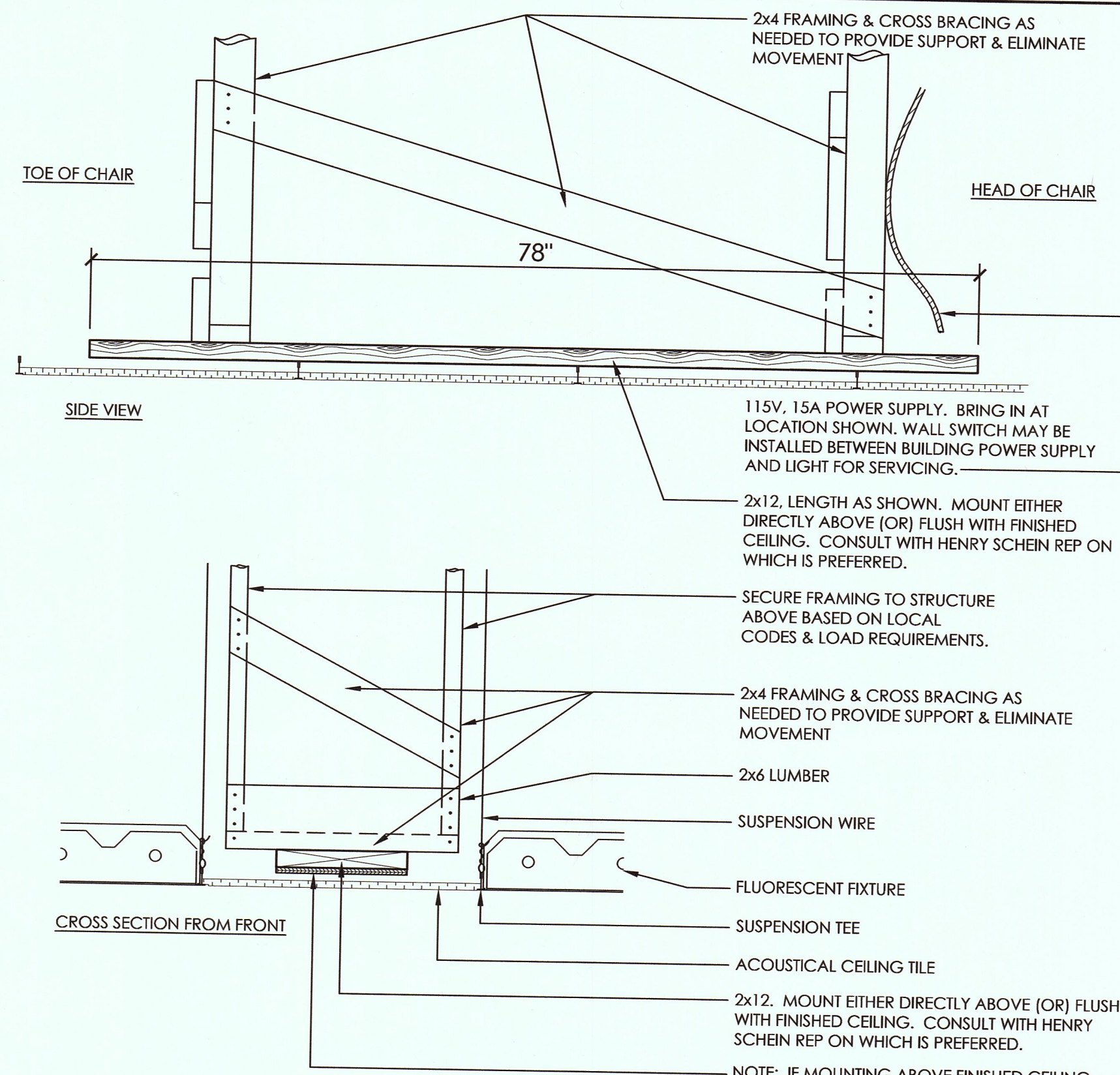
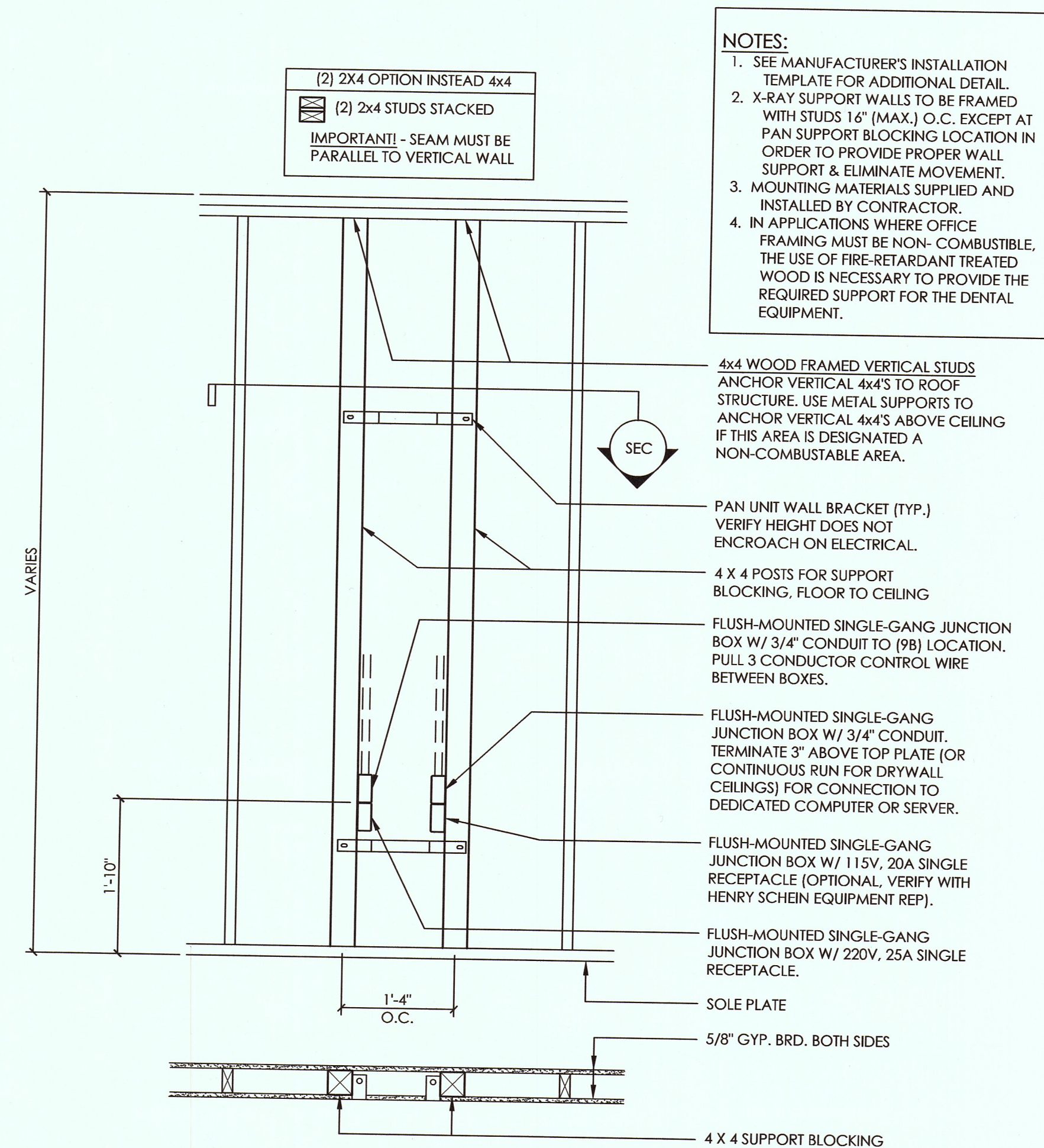


ADA RECEPTION COUNTER DETAIL
NOT TO SCALE



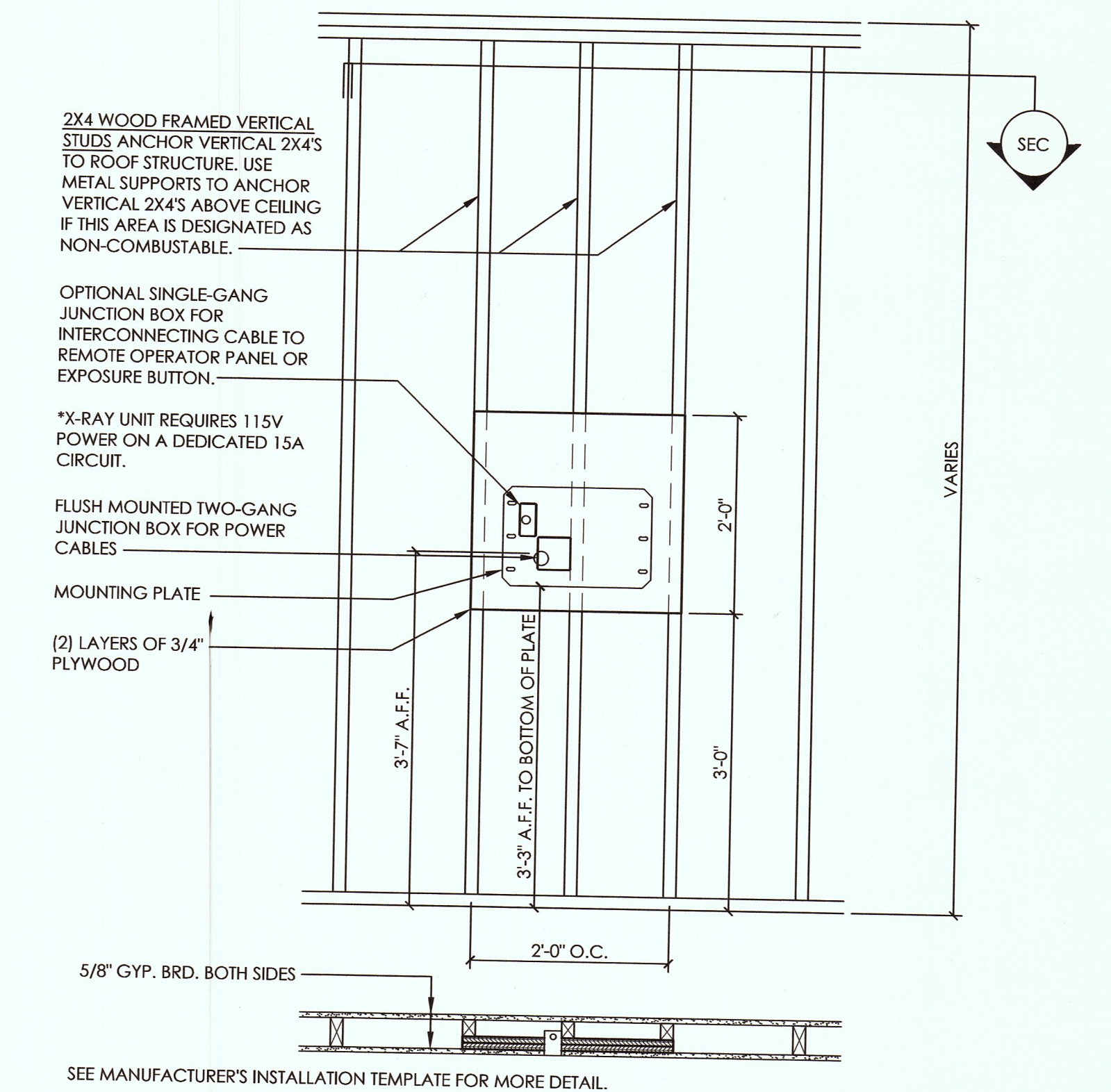
NOTES:
1. CEILING MOUNTED LIGHT SUPPORTS SHALL WITHSTAND A 200 LB. DEAD LOAD (MIN. 300 LB. IF MOUNTING A MONITOR ON THE TRACK). FRAMING SHALL BE BRACED LATERALLY AND LONGITUDINALLY TO PROVIDE A RIGID AND LEVEL SUPPORT.
2. WHERE REQUIRED BY LOCAL CODE, NON-COMBUSTIBLE MATERIALS AND/OR 5/8" FIRE CODE RATED GYP. BRD. TO WRAP THIS SUPPORT MAY BE REQUIRED FOR FIRE RATED CEILINGS. VERIFY EXACT REQUIREMENTS WITH LOCAL AUTHORITIES.
3. THIS IS A TYPICAL INSTALLATION. CONSULT HENRY SCHEIN DENTAL EQUIPMENT SALES SPECIALIST FOR EXACT REQUIREMENTS AND SPECS OF EQUIPMENT TO BE INSTALLED ON SITE.
4. MOUNTING MATERIALS SUPPLIED AND INSTALLED BY CONTRACTOR.

D-6 CEILING MOUNTED TRACK LIGHT
NOT TO SCALE



NOTES:
1. SEE MANUFACTURER'S INSTALLATION TEMPLATE FOR ADDITIONAL DETAIL.
2. X-RAY SUPPORT WALLS TO BE FRAMED WITH STUDS 1 1/2" (MAX.) O.C. EXCEPT AT PAN SUPPORT BLOCKING LOCATION IN ORDER TO PROVIDE PROPER WALL SUPPORT & ELIMINATE MOVEMENT.
3. MOUNTING MATERIALS SUPPLIED AND INSTALLED BY CONTRACTOR.
4. IN APPLICATIONS WHERE OFFICE FRAMING MUST BE NON-COMBUSTIBLE, THE USE OF FIRE-RETARDANT TREATED WOOD IS NECESSARY TO PROVIDE THE REQUIRED SUPPORT FOR THE DENTAL EQUIPMENT.

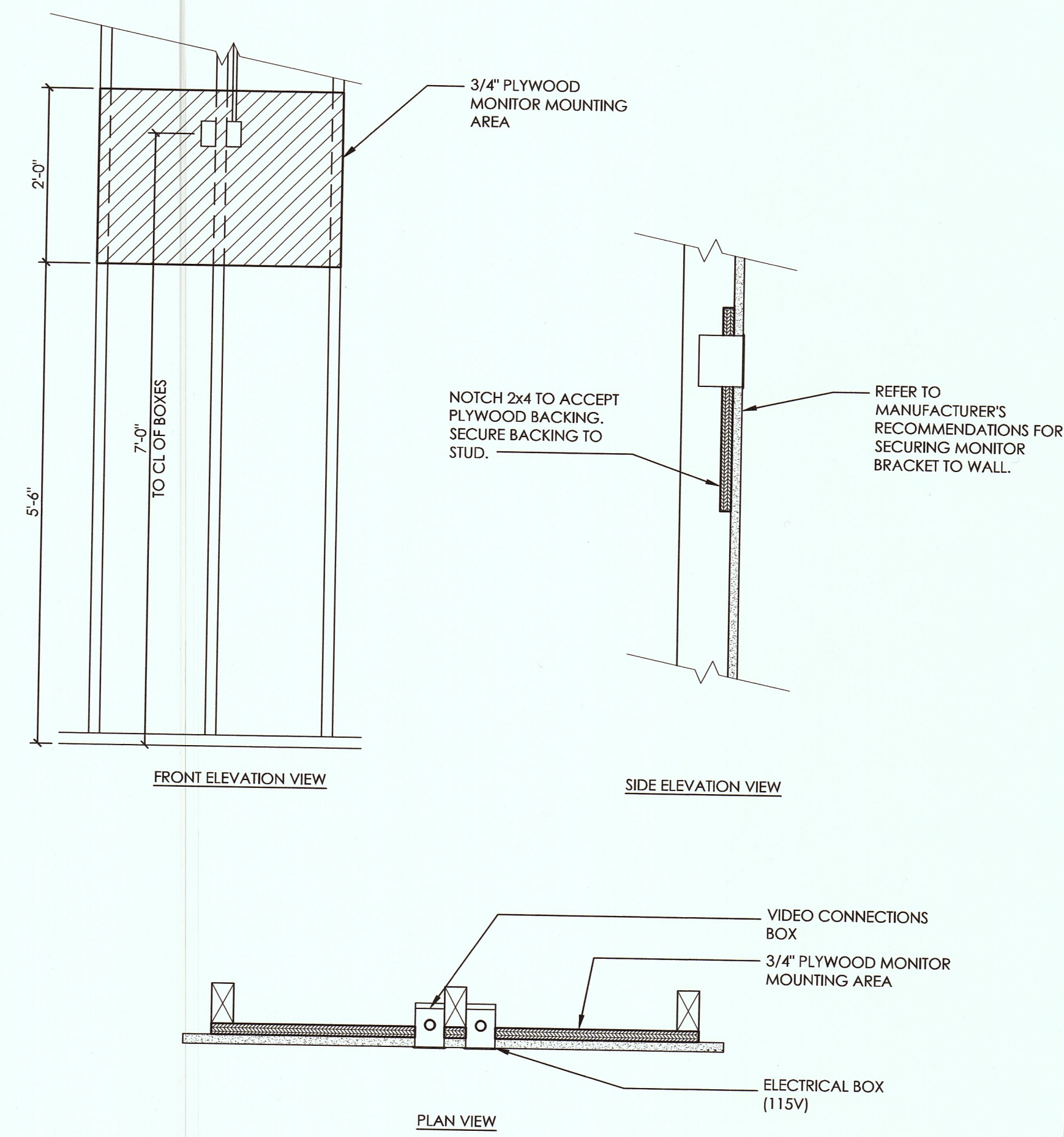
D-9C PAN X-RAY SUPPORT
NOT TO SCALE



THE WALL SUPPORT AND MOUNTING HARDWARE FOR THE UNIT MUST WITHSTAND A 100 LB. SHEAR LOAD AND A 400 LB. WITHDRAWAL FORCE AT EACH OF THE MOUNTING BOLTS. THE WALL FABRICATION AND ATTACHMENTS TO THE BUILDING STRUCTURE MUST BE CAPABLE OF WITHSTANDING A LOAD MOMENT OF 850 FT. LBS. AS OUTLINED IN THE MANUFACTURER'S INSTALLATION MANUAL.

MOUNTING MATERIALS SUPPLIED AND INSTALLED BY CONTRACTOR.

D-9 PROGENY JB-70/PREVA X-RAY SUPPORT
SCALE: 3/4" = 1'-0"



D-39A VIDEO MONITOR WALL MOUNT
NOT TO SCALE

HENRY SCHEIN®
DENTAL
10920 WEST LINCOLN AVENUE
WEST ALLIS, WI 53227

PROJECT:
SVMC
DENTAL CLINIC
LOCATION:
100 HOSPITAL DRIVE
BENNINGTON, VT 05201

HENRY SCHEIN REP:
HARRY FLESSAS
CENTER:
BOSTON, MA
PHONE #:
(603) 731-4323

IMPORTANT NOTE:
THIS DOCUMENT HAS BEEN PREPARED AS AN INSTRUMENT OF PROFESSIONAL SERVICE AND IS NOT AN ARCHITECTURAL PLAN. THE DESIGNATIONS INCLUDED HEREIN ARE THE SOLE PROPERTY OF HENRY SCHEIN DENTAL AND ARE PROTECTED UNDER COPYRIGHT. THEY MAY NOT BE REPRODUCED OR TRANSMITTED IN ANY FORM OR BY ANY MEANS, ELECTRONIC OR MECHANICAL, WITHOUT THE WRITTEN CONSENT OF HENRY SCHEIN AND FULL PAYMENT OF ANY ASSOCIATED DESIGN FEES.
ALL DIMENSIONS ARE SUBJECT TO JOB-SITE VERIFICATION.

DRAWING NAME:
SVMC-1H-F
PROJECT START DATE:
11/16/2015
FINALS START DATE:
03/28/2016
DRAWN BY: AKL
FINALS BY: AKL
CHECKED BY: JLR

NO.	DATE	DESCRIPTION
1	11/16/2015	ISSUED FOR PERMIT
2	03/28/2016	ISSUED FOR CONSTRUCTION
3		
4		
5		
6		
7		
8		
9		
10		

INT. SQ. FT. = 1243

SCALE: 3/4" = 1'-0" SHT. SIZE: D
CONSTRUCTION DETAILS

SA.3